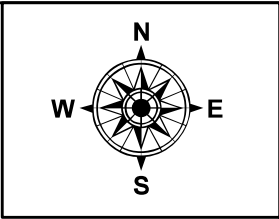
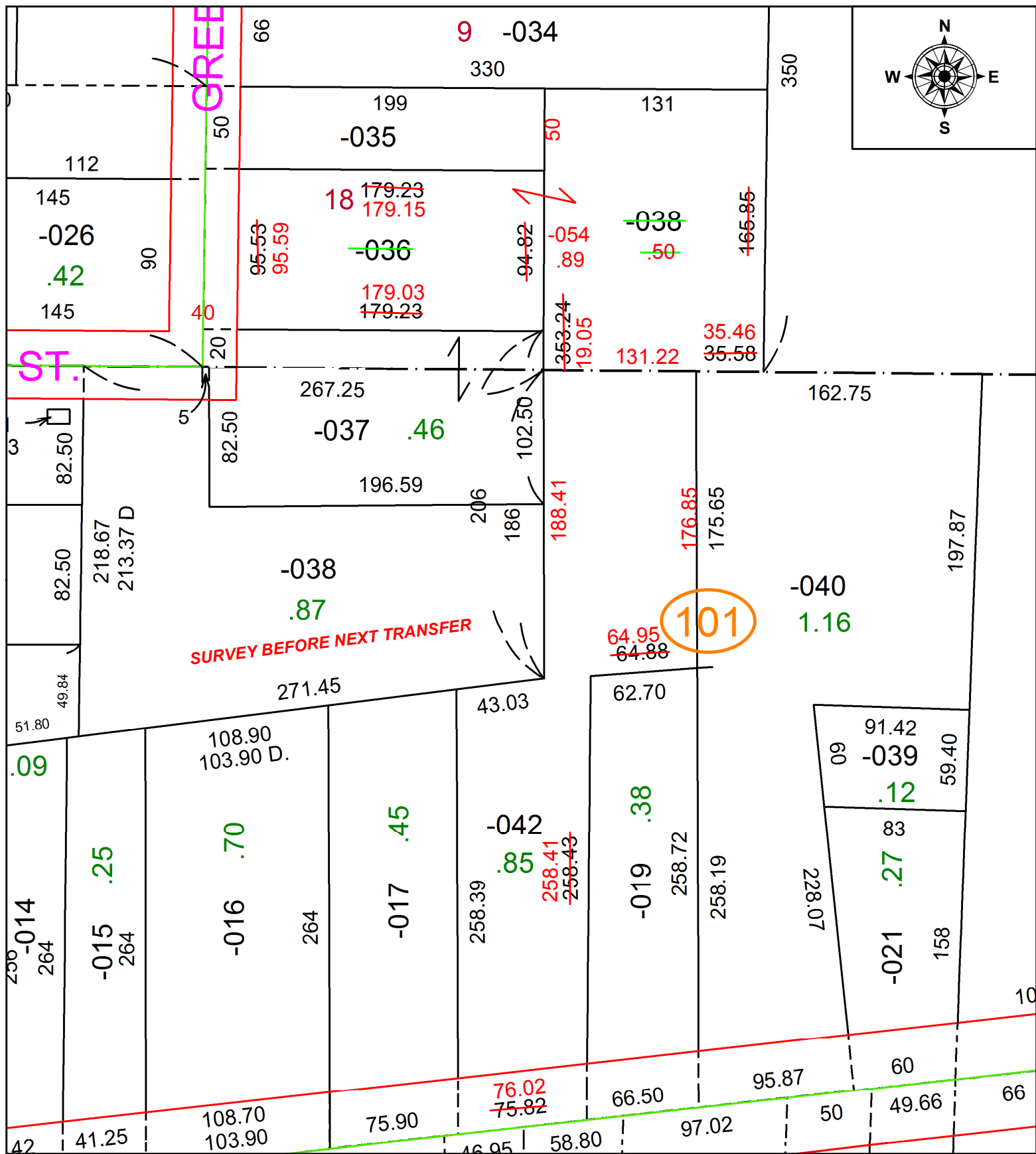


PARENT PARCEL: 05-00-011-101-042, 05-00-012-101-036, -038

CHILD PARCEL: 05-00-012-101-054

STARTING POINT: SOUTHEASTERLY CORNER OF SUBLLOT 18 IN B. GREBE'S SUBDIVISION

21-04305



SURVEY BEFORE NEXT TRANSFER

101

SPLITS/DEEDS PROCESSED
 LORAIN COUNTY TAX MAP DEPARTMENT
 226 MIDDLE AVE. ELYRIA, OH

SURVEYED BY: THOMAS SIMON
CLOSURE: 1: 174,246
MAP PAGE(S): 05-00-012
APPROVED BY: WRZ **DATE:** 5-26-21
SCALE: 1" = 75 **PRIOR INSTRUMENT:** 2014-0503503