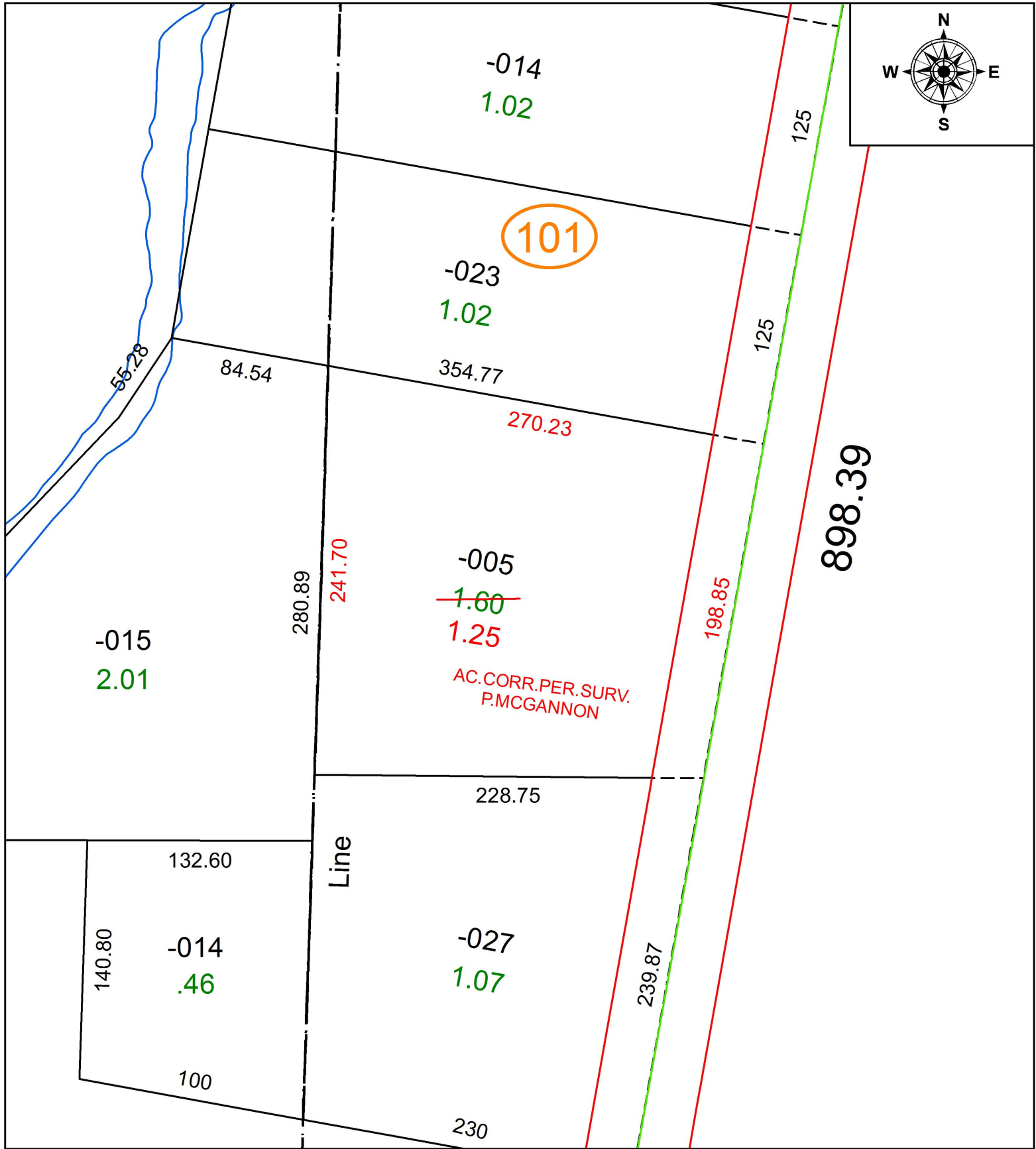


PARENT PARCEL: 05-00-013-101-005

CHILD PARCEL:

STARTING POINT: INTERSECTION OF C/L OF N. LAKE ST. AND SOUTH LINE OF O.L.13

20-04305-A



SPLITS/DEEDS PROCESSED
 LORAIN COUNTY TAX MAP DEPARTMENT
 226 MIDDLE AVE. ELYRIA, OH

SURVEYED BY: PATRICK A. MCGANNON

CLOSURE: 1:318,483

MAP PAGE(S): 5-00-013

APPROVED BY: RRM DATE: 3-20-20

SCALE: 1" = 75 PRIOR INSTRUMENT: 20090305494