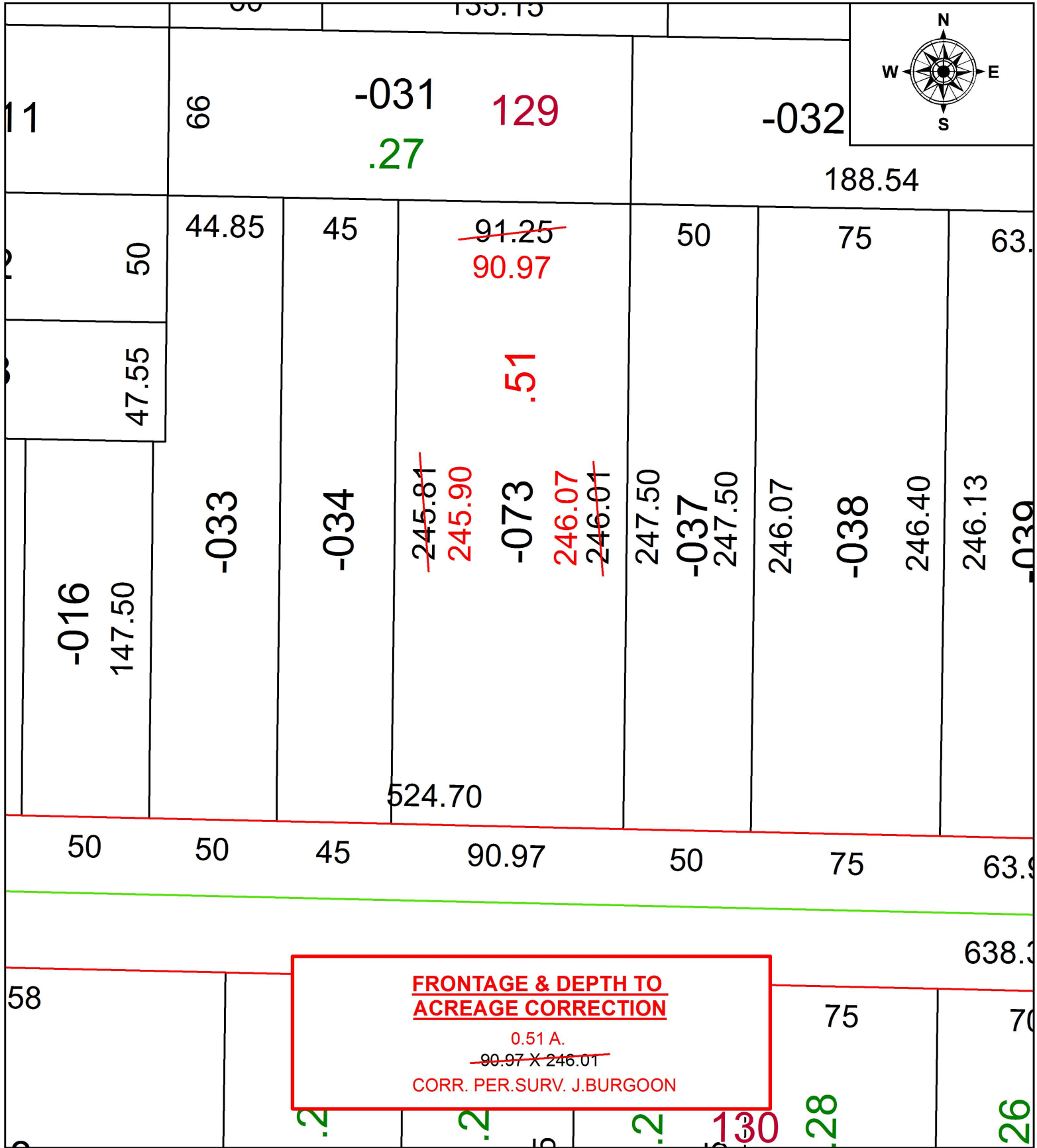


PARENT PARCEL: 18-00-027-110-073

CHILD PARCEL:

STARTING POINT: INTERSECTION OF C/L OF ERIE. ST. AND C/L OF WHEELING AVE.

20-04303-D



SPLITS/DEEDS PROCESSED
LORAIN COUNTY TAX MAP DEPARTMENT
226 MIDDLE AVE. ELYRIA, OH

SURVEYED BY: JOSEPH A. BURGOON
CLOSURE: 1:403,566
MAP PAGE(S): 18-00-027
APPROVED BY: RRM DATE: 3-13-20
SCALE: 1" = 50 PRIOR INSTRUMENT: 20190720487