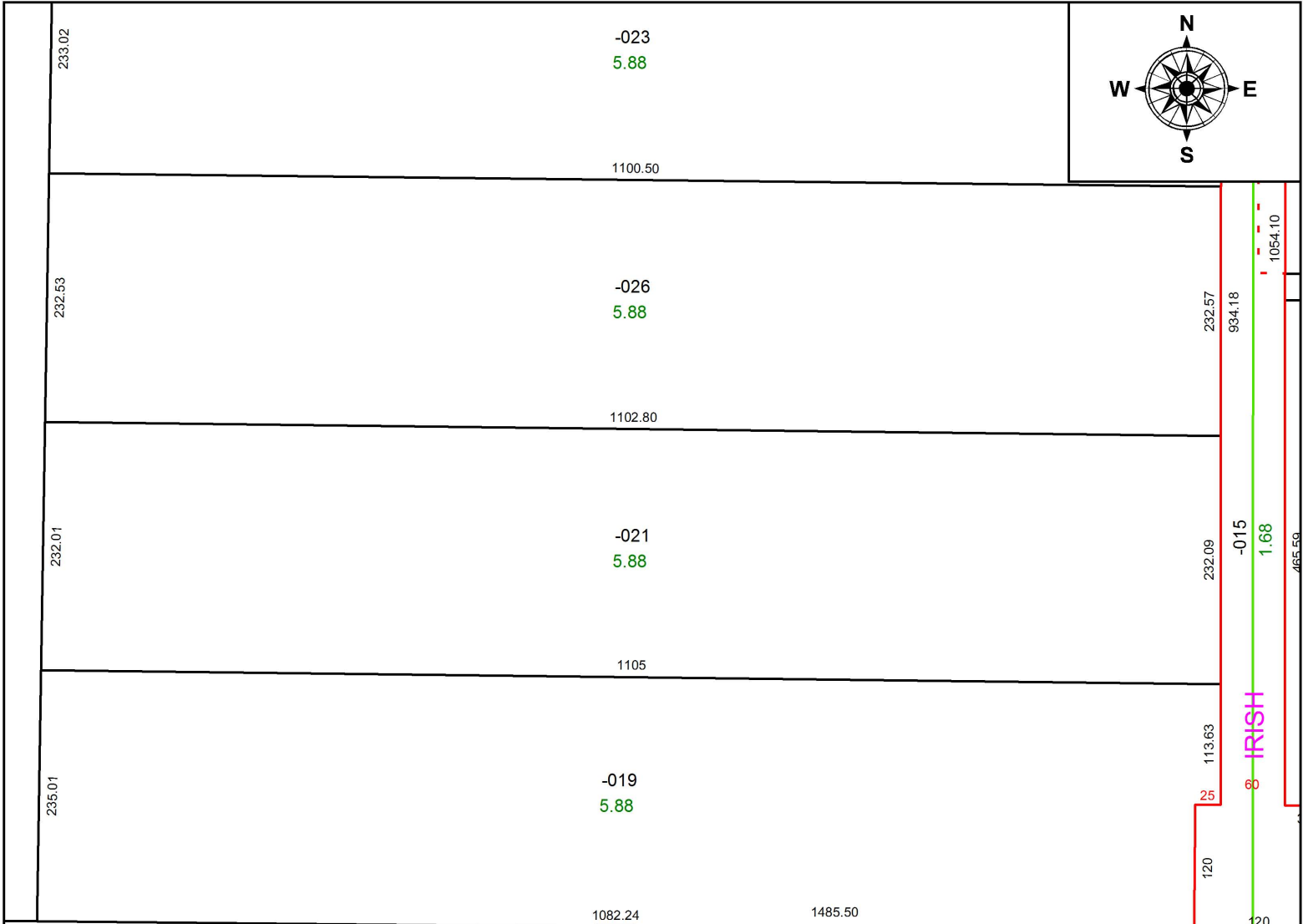


PARENT PARCEL: 20-05-008-000-019

20-04300-D

CHILD PARCEL:

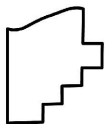
STARTING POINT: INTERSECTION OF C/L OF BURSLEY RD. AND C/L OF QUARRY RD.



2531.45

MAP CORRECTION ONLY

-026
53.66



SPLITS/DEEDS PROCESSED
LORAIN COUNTY TAX MAP DEPARTMENT
226 MIDDLE AVE. ELYRIA, OH

SURVEYED BY: PATRICK A. MCGANNON

CLOSURE: 1:679,124

MAP PAGE(S): 20-05-008

APPROVED BY: RRM DATE: 3-6-20

SCALE: 1" = 150 PRIOR INSTRUMENT: OR 968/381