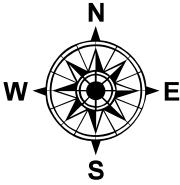
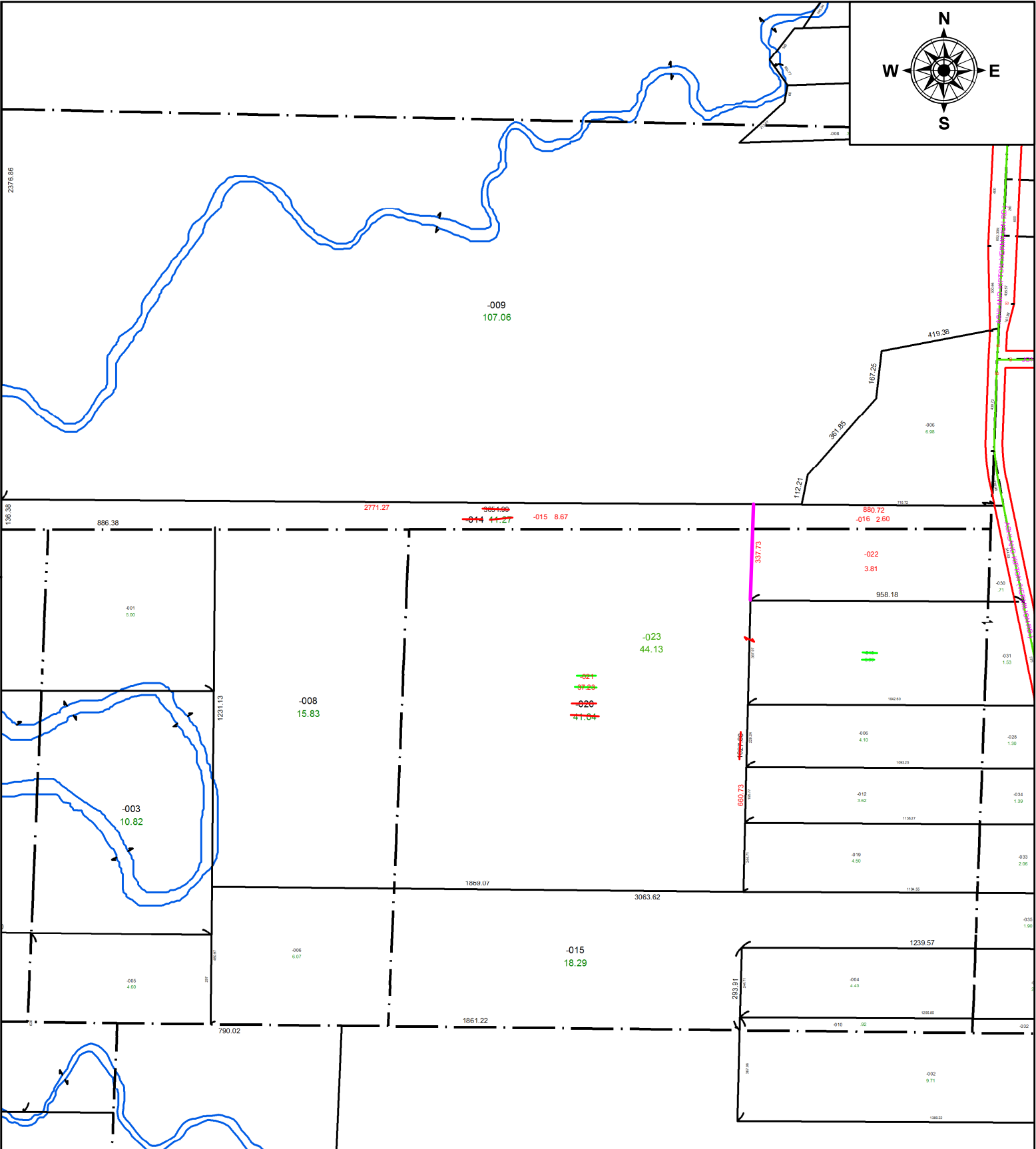


PARENT PARCEL: 17-06-007-000-014, 17-06-010-000-008, 17-06-011-000-013, -020, 17-06-018-000-030, -031
CHILD PARCEL: 17-06-007-000-015, -016, 17-06-011-000-021 THRU -023, 17-06-010-000-008, 17-06-018-000-030, -031
STARTING POINT: INTERSECTION OF C/L OF ASHLAND-KIPTON RD & SOUTH LINE OF OL 14

21-04299



SPLITS/DEEDS PROCESSED
LORAIN COUNTY TAX MAP DEPARTMENT
226 MIDDLE AVE. ELYRIA, OH

SURVEYED BY: THOMAS M. SNEZEK
CLOSURE: 1:1,443,423
MAP PAGE(S): 17-06-011
APPROVED BY: WRZ **DATE:** 5-17-21
SCALE: 1" = 450 **PRIOR INSTRUMENT:** 2015-0570319