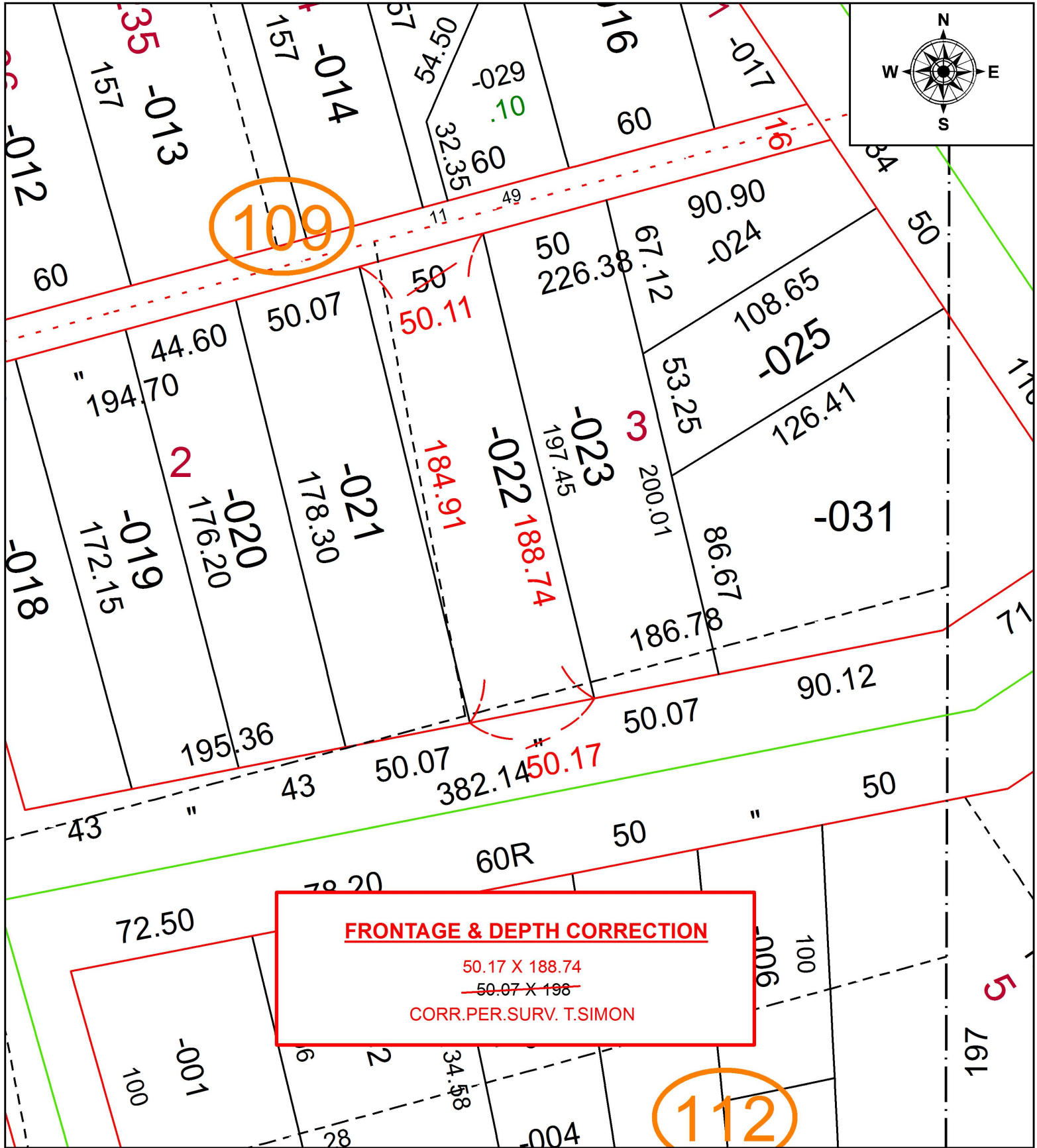


PARENT PARCEL: 02-01-005-109-022

CHILD PARCEL:

STARTING POINT: INTERSECTION OF C/L OF WASHINGTON AVE AND C/L OF W. 6TH ST.

20-04297-C



SPLITS/DEEDS PROCESSED
 LORAIN COUNTY TAX MAP DEPARTMENT
 226 MIDDLE AVE. ELYRIA, OH

SURVEYED BY: THOMAS A. SIMON
 CLOSURE: 1: 58,748
 MAP PAGE(S): 2-01-005
 APPROVED BY: RRM DATE: 3-2-20
 SCALE: 1" = 50 PRIOR INSTRUMENT: 20150556946