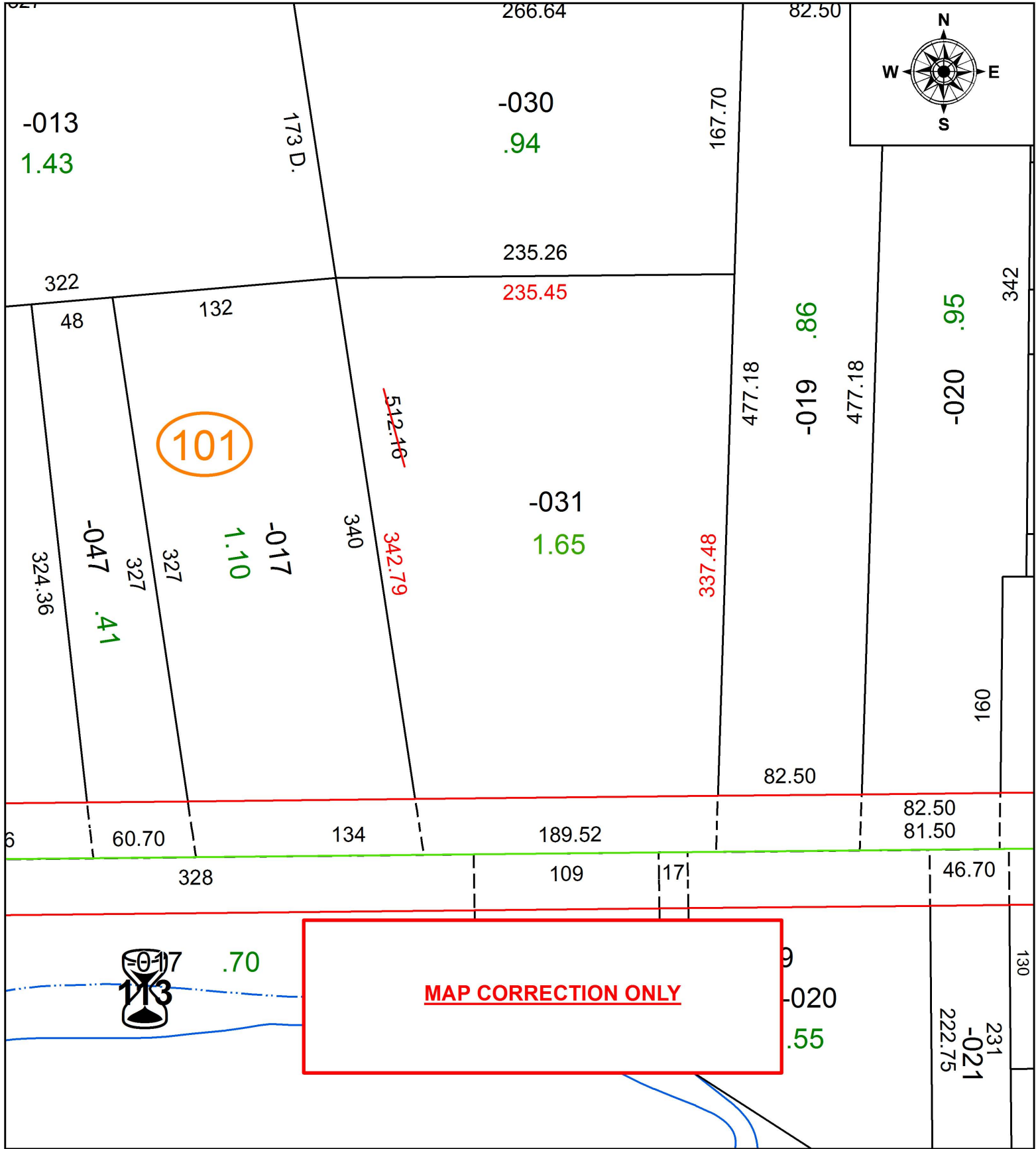


PARENT PARCEL: 05-00-010-101-031

CHILD PARCEL:

STARTING POINT: INTERSECTION OF C/L OF W. MAIN ST. AND C/L OF N. LAKE ST.

20-04295-C



MAP CORRECTION ONLY



SPLITS/DEEDS PROCESSED
LORAIN COUNTY TAX MAP DEPARTMENT
226 MIDDLE AVE. ELYRIA, OH

SURVEYED BY: WILFREDO BARBOSA

CLOSURE: 1:185,247

MAP PAGE(S): 5-00-010

APPROVED BY: RRM DATE: 2-26-20

SCALE: 1" = 75' PRIOR INSTRUMENT: 19970488132