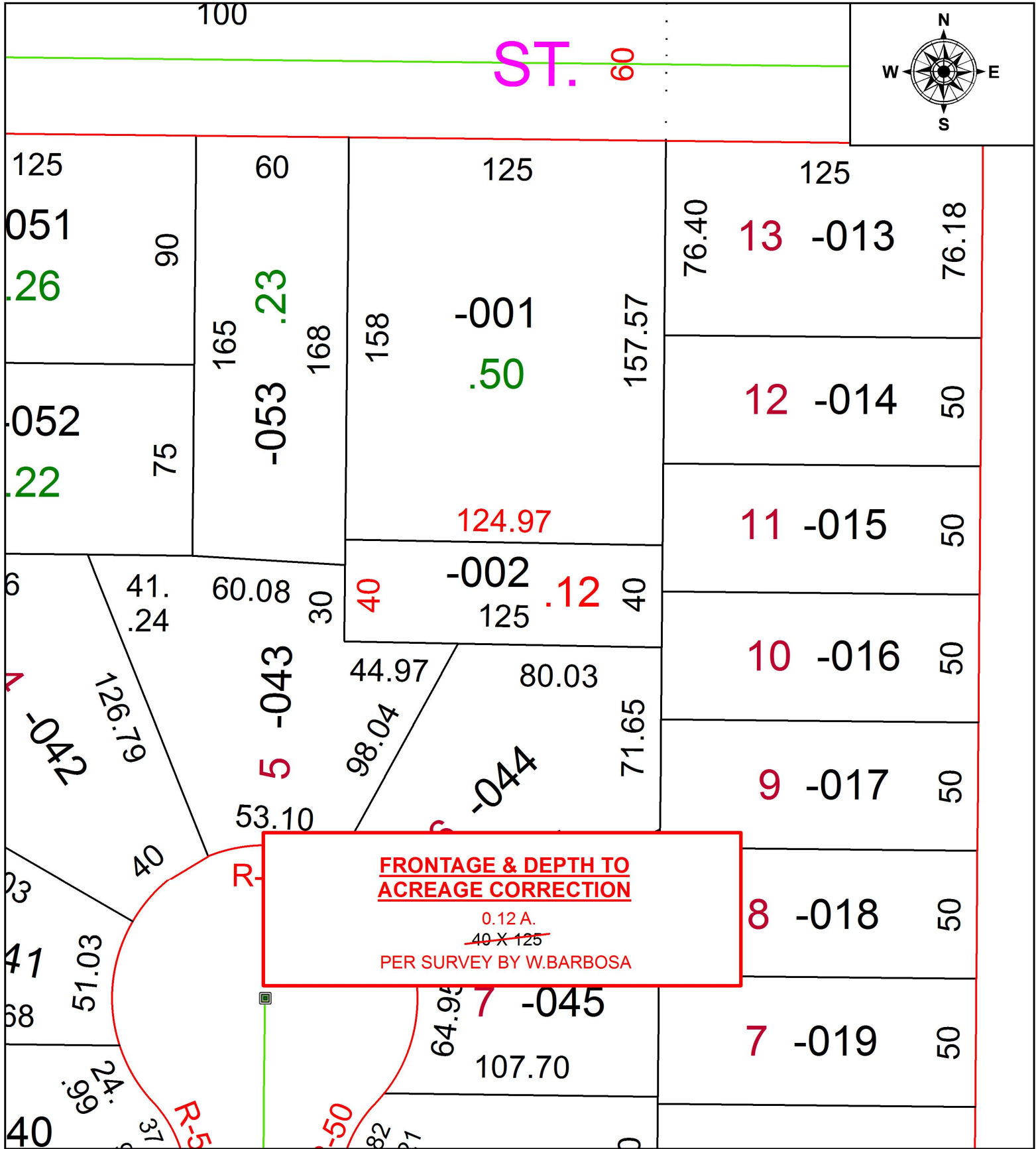


PARENT PARCEL: 06-25-019-105-002

CHILD PARCEL:

STARTING POINT: NORTHEAST CORNER OF S/L 6 IN LONGFORD EXTENSION

20-04293-D



SPLITS/DEEDS PROCESSED
 LORAIN COUNTY TAX MAP DEPARTMENT
 226 MIDDLE AVE. ELYRIA, OH

SURVEYED BY: WILFREDO BARBOSA
 CLOSURE: 1:83,481
 MAP PAGE(S): 6-25-019
 APPROVED BY: RRM DATE: 2-25-20
 SCALE: 1" = 50' PRIOR INSTRUMENT: 20130450625