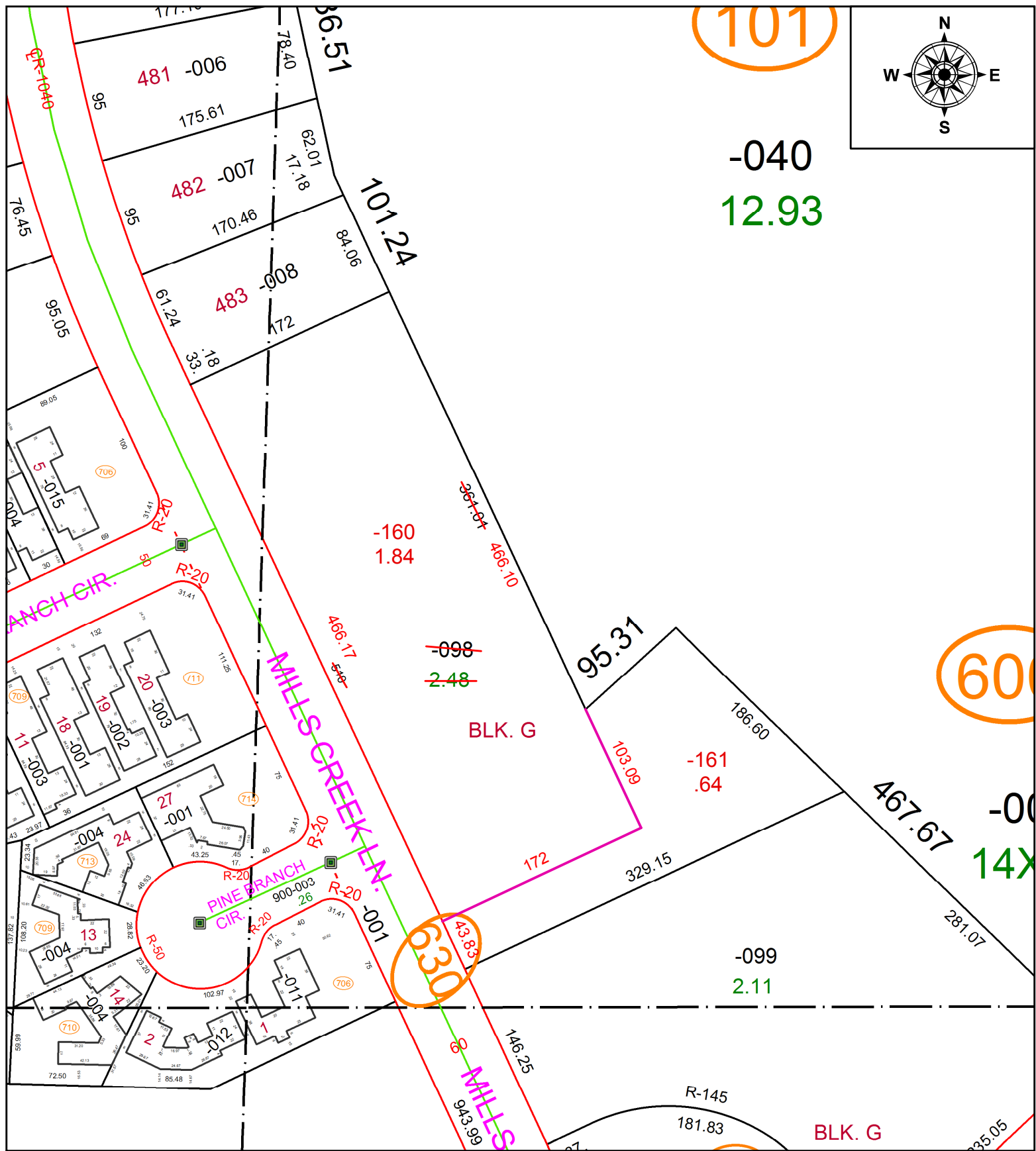


PARENT PARCEL: 07-00-006-101-098

CHILD PARCEL: 07-00-006-101-160, -161

21-04287

STARTING POINT: SOUTHEAST CORNER OF LOT 483, MILLS CREEK SUBDIVISION SECTION "D"



SPLITS/DEEDS PROCESSED
 LORAIN COUNTY TAX MAP DEPARTMENT
 226 MIDDLE AVE. ELYRIA, OH

SURVEYED BY: THOMAS JAMES KING JR.
CLOSURE: 1:309508
MAP PAGE(S): 07-00-006-C
APPROVED BY: AC **DATE:** 4/23/21
SCALE: 1" = 100 **PRIOR INSTRUMENT:** 2020-0788627