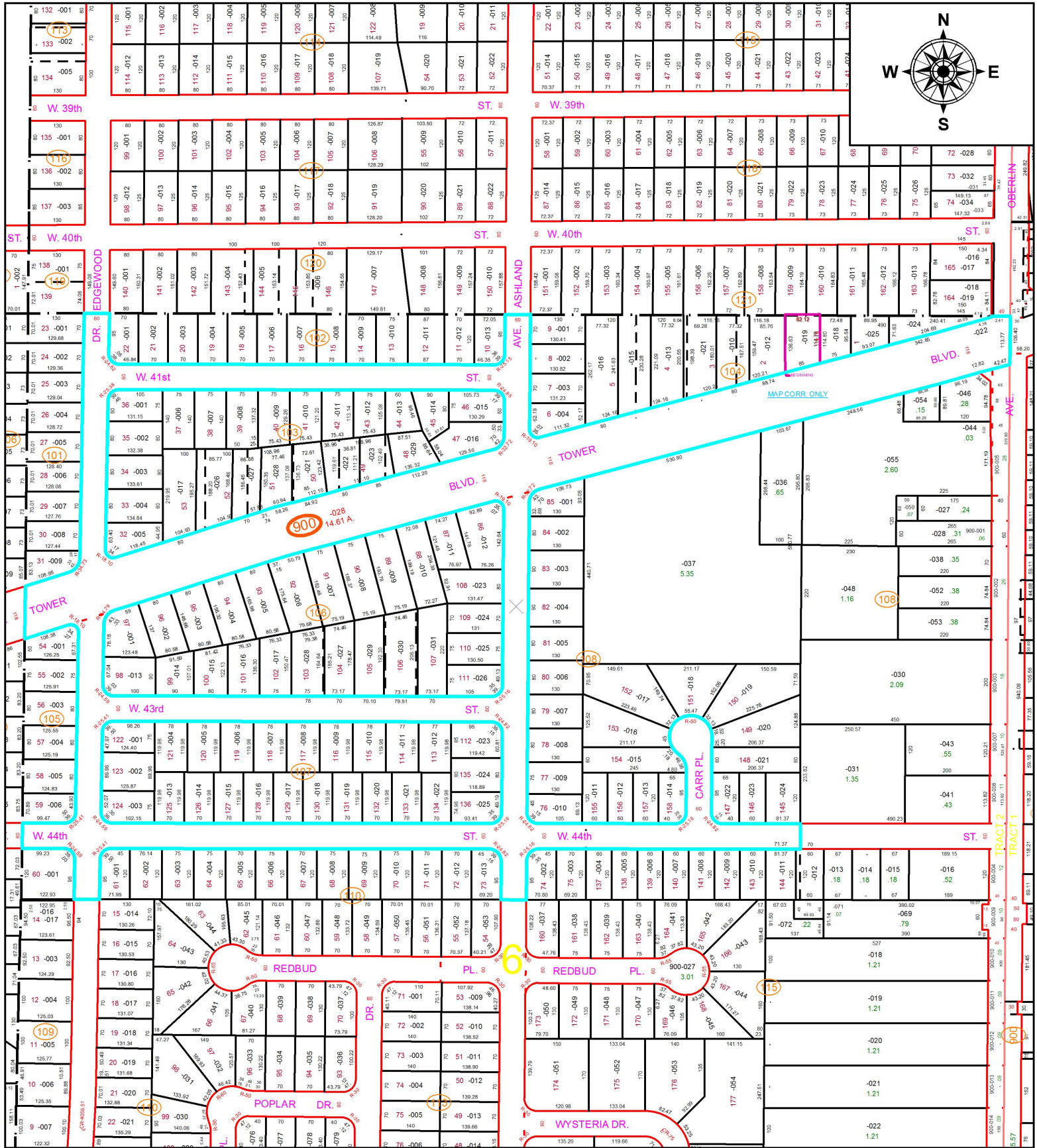


PARENT PARCEL: ADD TO DUPLICATE

CHILD PARCEL: 02-02-006-900-028 14.61 A.

20-04287-A

STARTING POINT: CARR ESTATES SUB. NO. 1, NO. 2, & NO. 3 STREET DEDICATION



SPLITS/DEEDS PROCESSED

LORAIN COUNTY TAX MAP DEPARTMENT
226 MIDDLE AVE. ELYRIA, OH

SURVEYED BY: RAY HOLLIS

CLOSURE: NA

MAP PAGE(S): 02-02-006

APPROVED BY: TJS DATE: 2/7/2020

SCALE: 1" = 300'

PRIOR INSTRUMENT: DV XXXX/XXXX