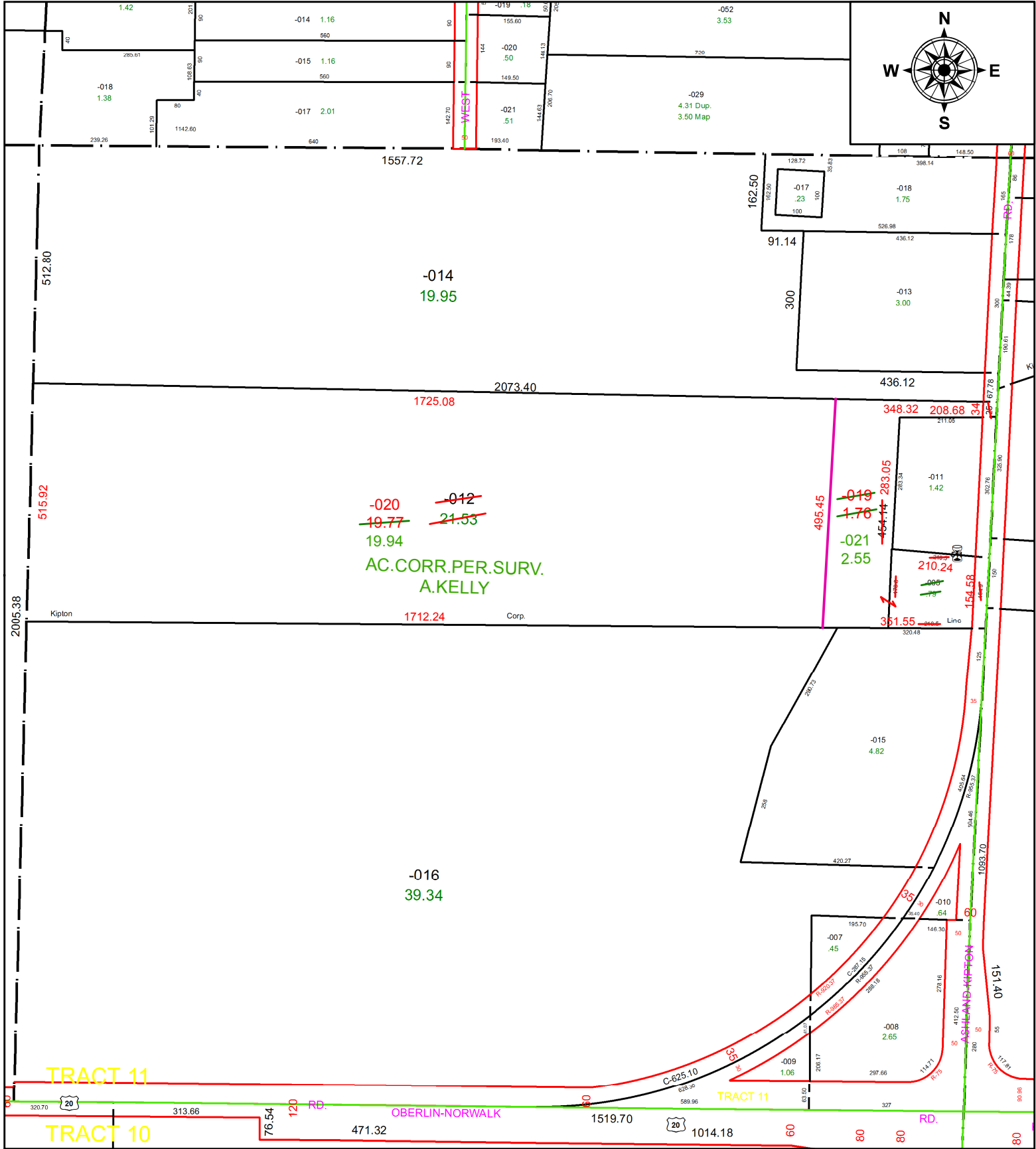


PARENT PARCEL: 13-11-025-000-005, -012
 CHILD PARCEL: 13-11-025-000-019 THRU -021
 STARTING POINT: NORTHWEST CORNER OF O.L.26 TR.11

21-04285



SPLITS/DEEDS PROCESSED
 LORAIN COUNTY TAX MAP DEPARTMENT
 226 MIDDLE AVE. ELYRIA, OH

SURVEYED BY: AMY M. KELLY
 CLOSURE: 1: 675,298
 MAP PAGE(S): 13-11-025
 APPROVED BY: RRM DATE: 4-12-21
 SCALE: 1" = 275 PRIOR INSTRUMENT: 20130477502