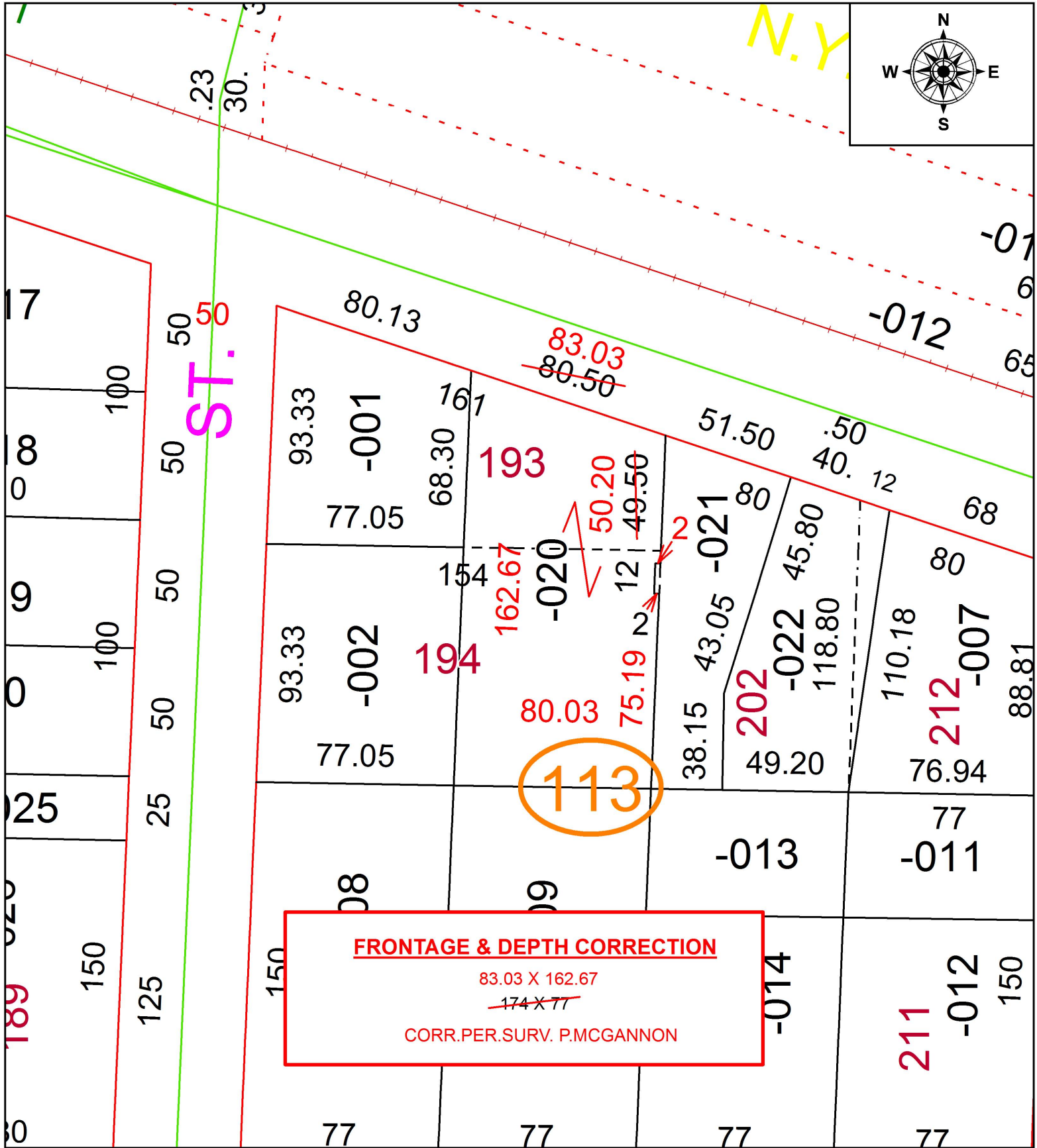


PARENT PARCEL: 05-00-024-113-020

CHILD PARCEL:

STARTING POINT: INTERSECTION OF SOUTH LINE OF MAPLE ST. AND WEST LINE OF MIDDLE ST.

20-04281-C



**SPLITS/DEEDS PROCESSED**  
 LORAIN COUNTY TAX MAP DEPARTMENT  
 226 MIDDLE AVE. ELYRIA, OH

SURVEYED BY: PATRICK A. MCGANNON

CLOSURE: 1:25,146

MAP PAGE(S): 5-00-024

APPROVED BY: RRM DATE: 2-5-20

SCALE: 1" = 50 PRIOR INSTRUMENT: 20190721477