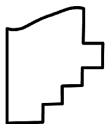
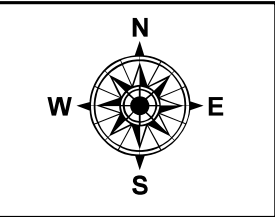
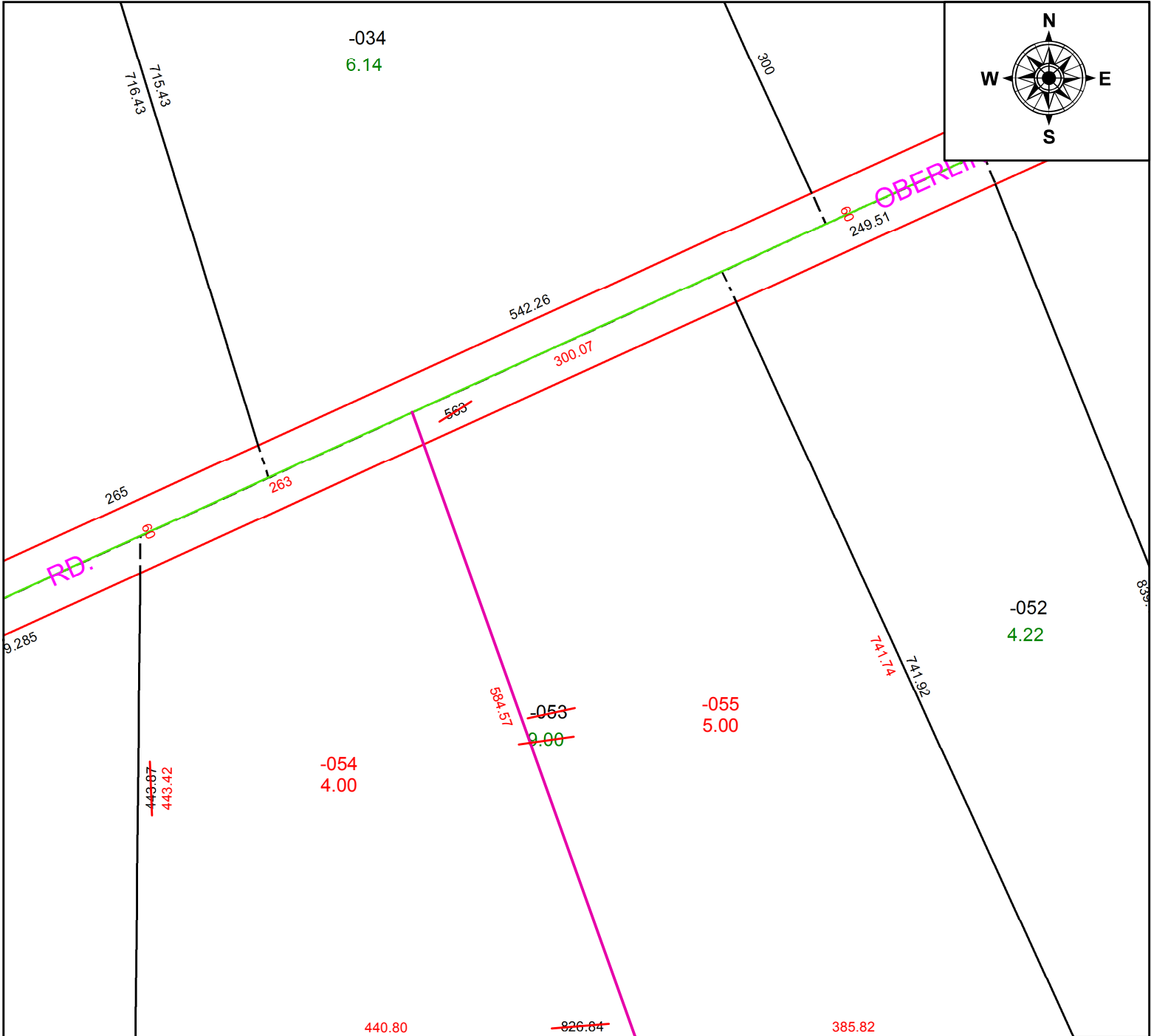


PARENT PARCEL: 09-00-081-000-053

CHILD PARCEL: 09-00-081-000-054, -055

STARTING POINT: INTERSECTION OF C/L OF S.R. 511 AND C/L OF QUARRY RD.

21-04280



SPLITS/DEEDS PROCESSED
 LORAIN COUNTY TAX MAP DEPARTMENT
 226 MIDDLE AVE. ELYRIA, OH

SURVEYED BY: TIMOTHY D., HOZALSKI
CLOSURE: 1: 401,655
MAP PAGE(S): 9-00-081
APPROVED BY: RRM **DATE:** 4-2-21
SCALE: 1" = 125 **PRIOR INSTRUMENT:** 19930214903