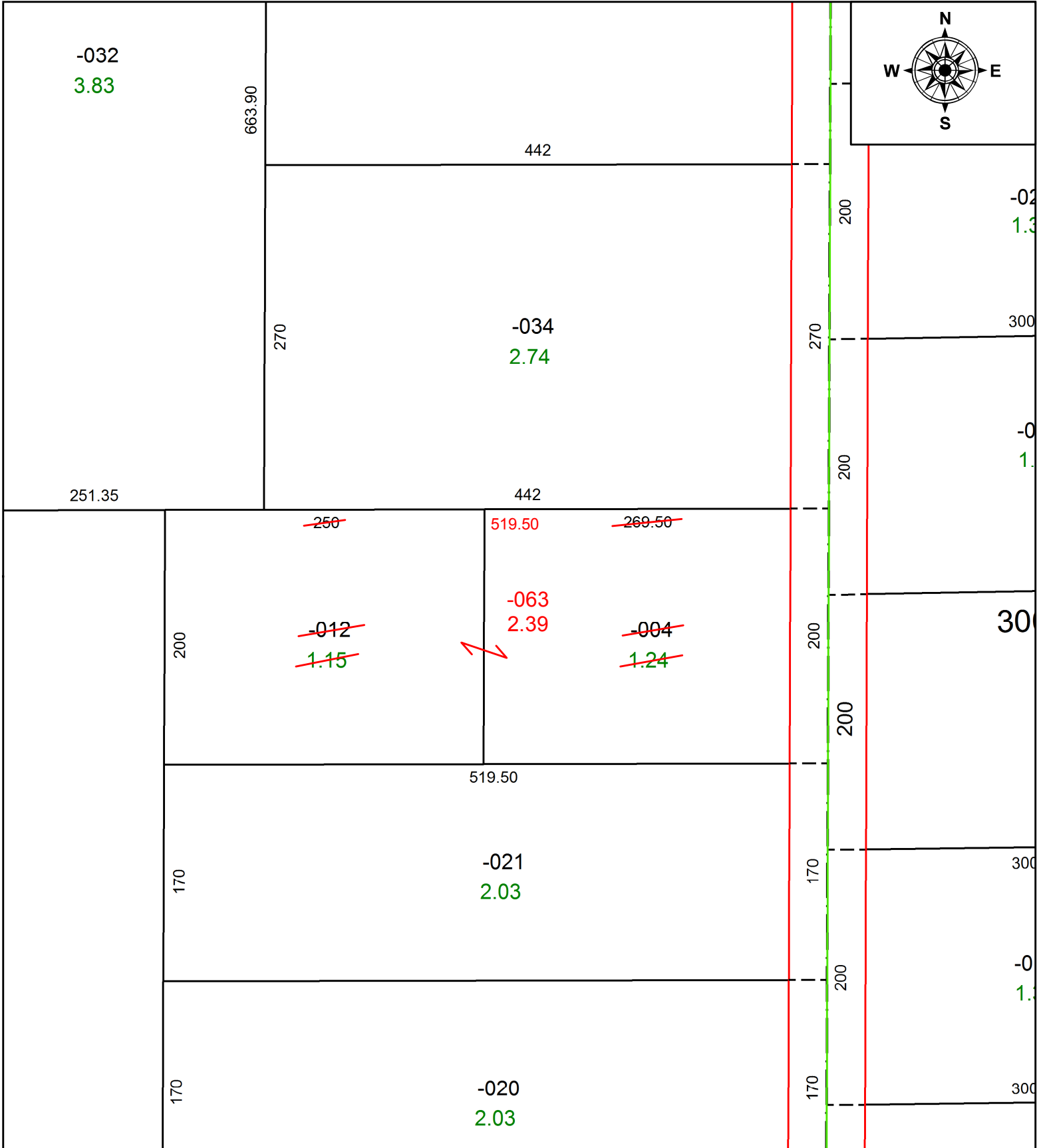


PARENT PARCEL: 15-00-058-000-004, -012

CHILD PARCEL: 15-00-058-000-063

STARTING POINT: INTERSECTION OF C/L OF S.R.303 AND C/L OF WHITEHEAD RD.

21-04274



**SPLITS/DEEDS PROCESSED**  
 LORAIN COUNTY TAX MAP DEPARTMENT  
 226 MIDDLE AVE. ELYRIA, OH

SURVEYED BY: THOMAS A. SIMON

CLOSURE: 1: 2147483648

MAP PAGE(S): 15-00-058

APPROVED BY: RRM DATE: 3-19-21

SCALE: 1" = 100 PRIOR INSTRUMENT: 20180657124