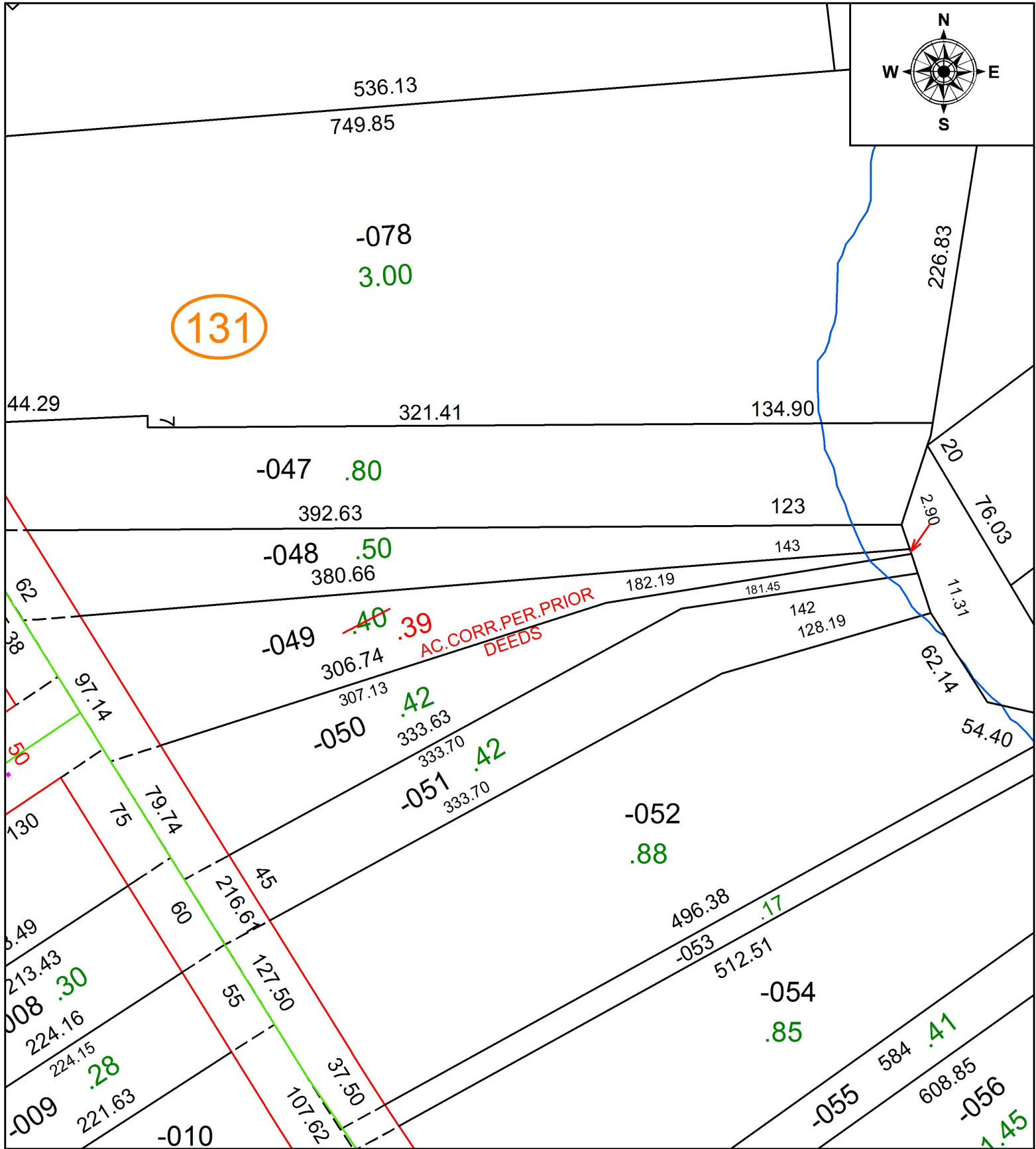
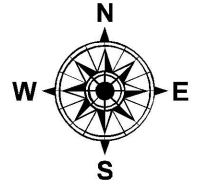


PARENT PARCEL: 10-00-004-131-049

CHILD PARCEL:

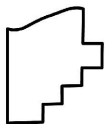
STARTING POINT: SOUTHWEST CORNER OF LAND CONVEYED TO W.H. & FRANCES L. CROW (DV 299/465)

20-04271-A



131

AC. CORR. PER. PRIOR DEEDS



SPLITS/DEEDS PROCESSED
LORAIN COUNTY TAX MAP DEPARTMENT
226 MIDDLE AVE. ELYRIA, OH

SURVEYED BY: N/A
CLOSURE: 1:58,153
MAP PAGE(S): 10-00-004
APPROVED BY: RRM DATE: 2-3-20
SCALE: 1" = 75 PRIOR INSTRUMENT: 20180677183