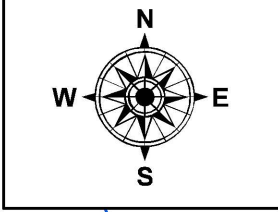
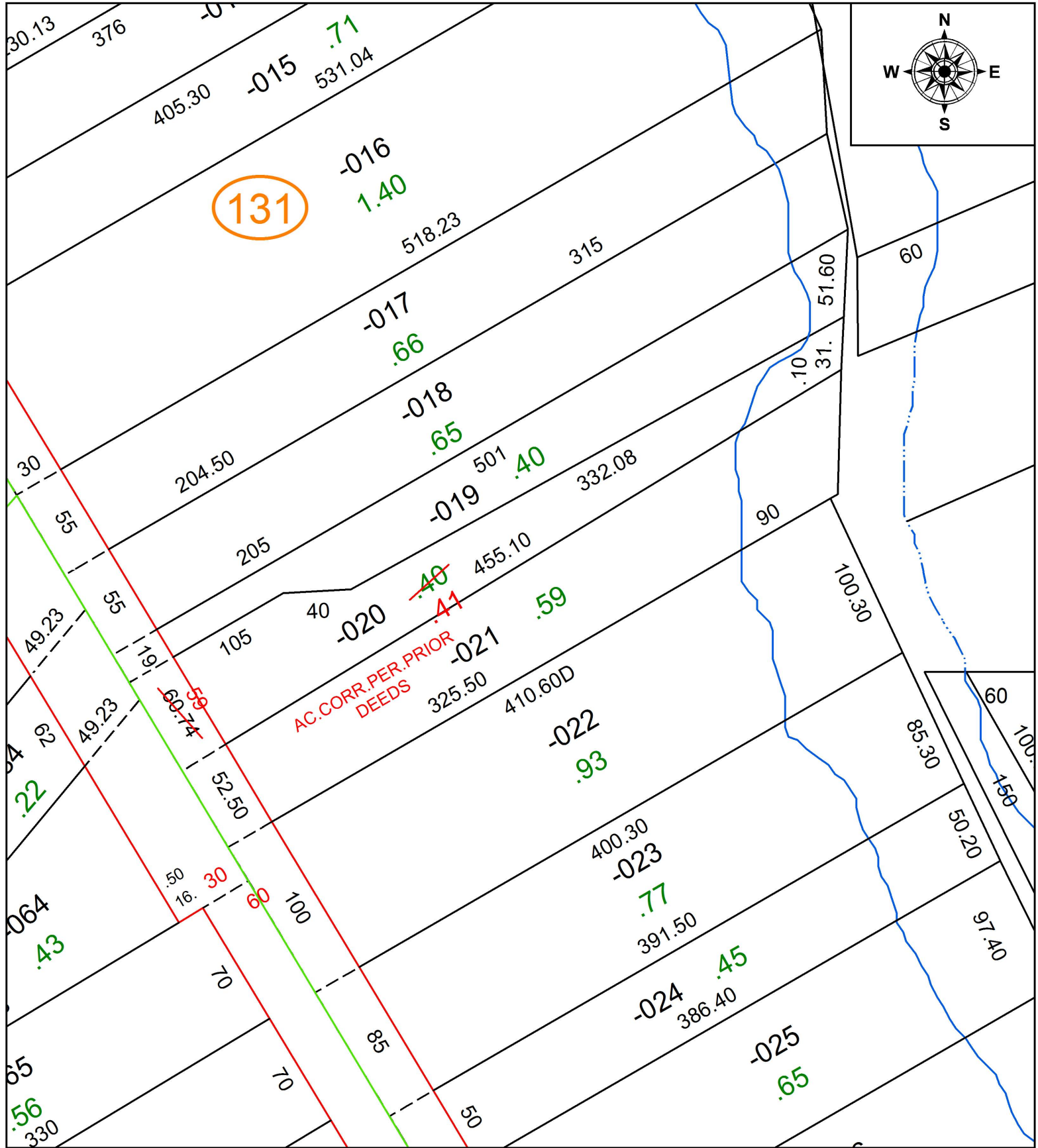


PARENT PARCEL: 10-00-004-131-020

CHILD PARCEL:

STARTING POINT: NORTHWEST CORNER OF LAND CONVEYED TO RAYMOND F. & WALTER N. THOMPSON (DV 396/371)

20-04268-A



SPLITS/DEEDS PROCESSED
 LORAIN COUNTY TAX MAP DEPARTMENT
 226 MIDDLE AVE. ELYRIA, OH

SURVEYED BY: N/A
 CLOSURE: 1:14,137
 MAP PAGE(S): 10-00-004
 APPROVED BY: RRM DATE: 2-3-20
 SCALE: 1" = 75' PRIOR INSTRUMENT: 20190703347