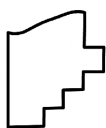
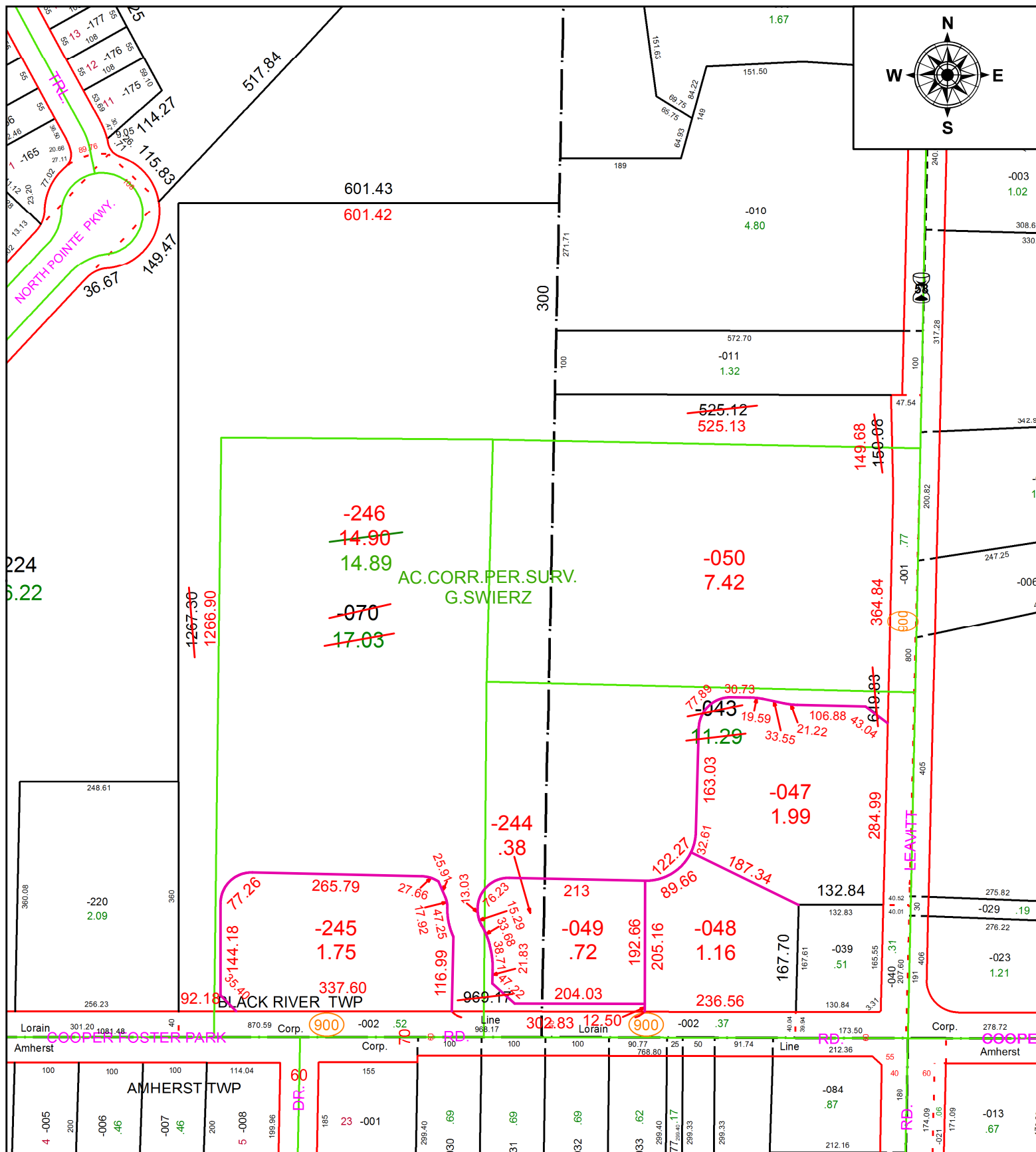


PARENT PARCEL: 02-02-002-000-070, 02-02-003-101-043

CHILD PARCEL: 02-02-002-000-244 THRU -246, 02-02-003-101-047 THRU -050

STARTING POINT: INTERSECTION OF C/L OF COOPER FOSTER PARK RD. AND C/L OF LEAVITT RD.

21-04267



SPLITS/DEEDS PROCESSED

LORAIN COUNTY TAX MAP DEPARTMENT
226 MIDDLE AVE. ELYRIA, OH

SURVEYED BY: GARY S. SWIERZ

CLOSURE: 1: 104,735

MAP PAGE(S): 2-02-003

APPROVED BY: RRM DATE: 4-2-21

SCALE: 1" = 200 PRIOR INSTRUMENT: 20170633000