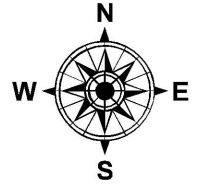


PARENT PARCEL: ADD TO DUP.

CHILD PARCEL: 20-05-017-104-024, -025

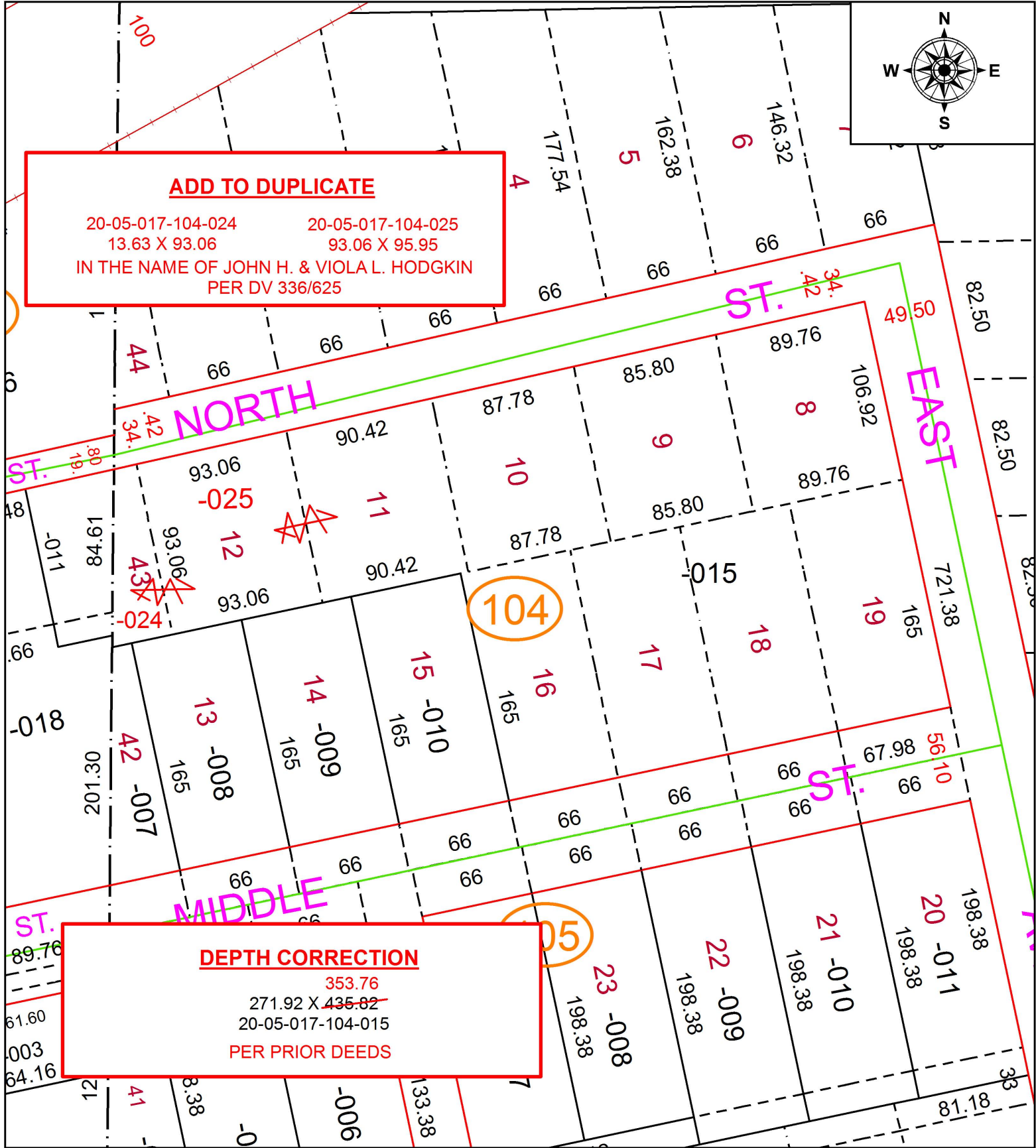
STARTING POINT:

20-04265-C



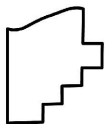
ADD TO DUPLICATE

20-05-017-104-024 20-05-017-104-025
 13.63 X 93.06 93.06 X 95.95
 IN THE NAME OF JOHN H. & VIOLA L. HODGKIN
 PER DV 336/625



DEPTH CORRECTION

353.76
~~271.92 X 435.82~~
 20-05-017-104-015
 PER PRIOR DEEDS



SPLITS/DEEDS PROCESSED
 LORAIN COUNTY TAX MAP DEPARTMENT
 226 MIDDLE AVE. ELYRIA, OH

SURVEYED BY: N/A
 CLOSURE: N/A
 MAP PAGE(S): 20-05-017
 APPROVED BY: RRM DATE: 1-31-20
 SCALE: 1" = 75 PRIOR INSTRUMENT: DV 336/625