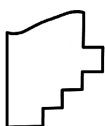
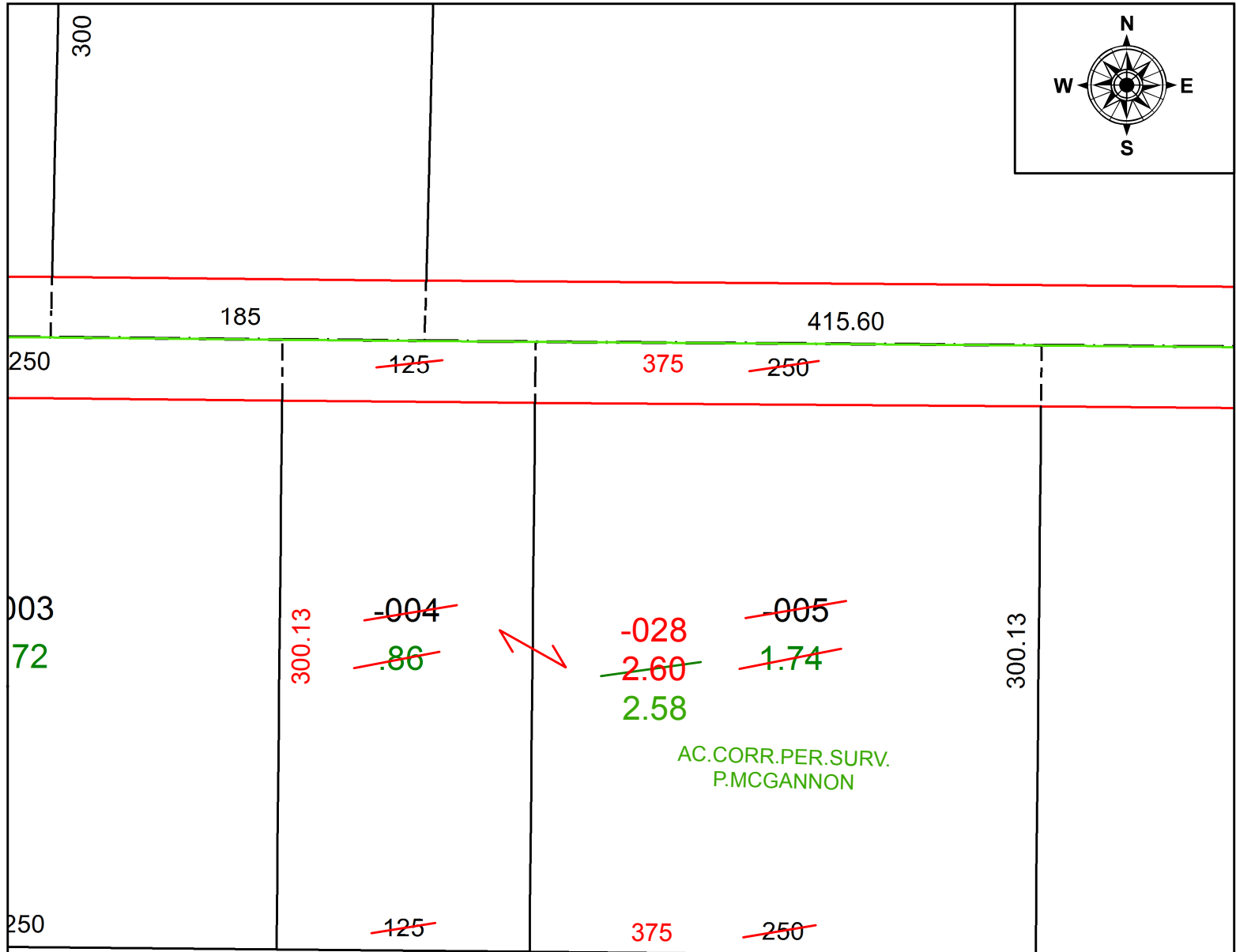
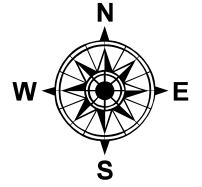


PARENT PARCEL: 08-12-015-000-004, -005

CHILD PARCEL: 08-12-015-000-028

STARTING POINT: INTERSECTION OF C/L OF BAIRD RD. AND C/L OF BECKER RD.

21-04263



SPLITS/DEEDS PROCESSED
 LORAIN COUNTY TAX MAP DEPARTMENT
 226 MIDDLE AVE. ELYRIA, OH

SURVEYED BY: PATRICK A. MCGANNON

CLOSURE: 1:2147483648

MAP PAGE(S): 8-12-015

APPROVED BY: RRM DATE: 3-3-21

SCALE: 1" = 75' PRIOR INSTRUMENT: 20040984651