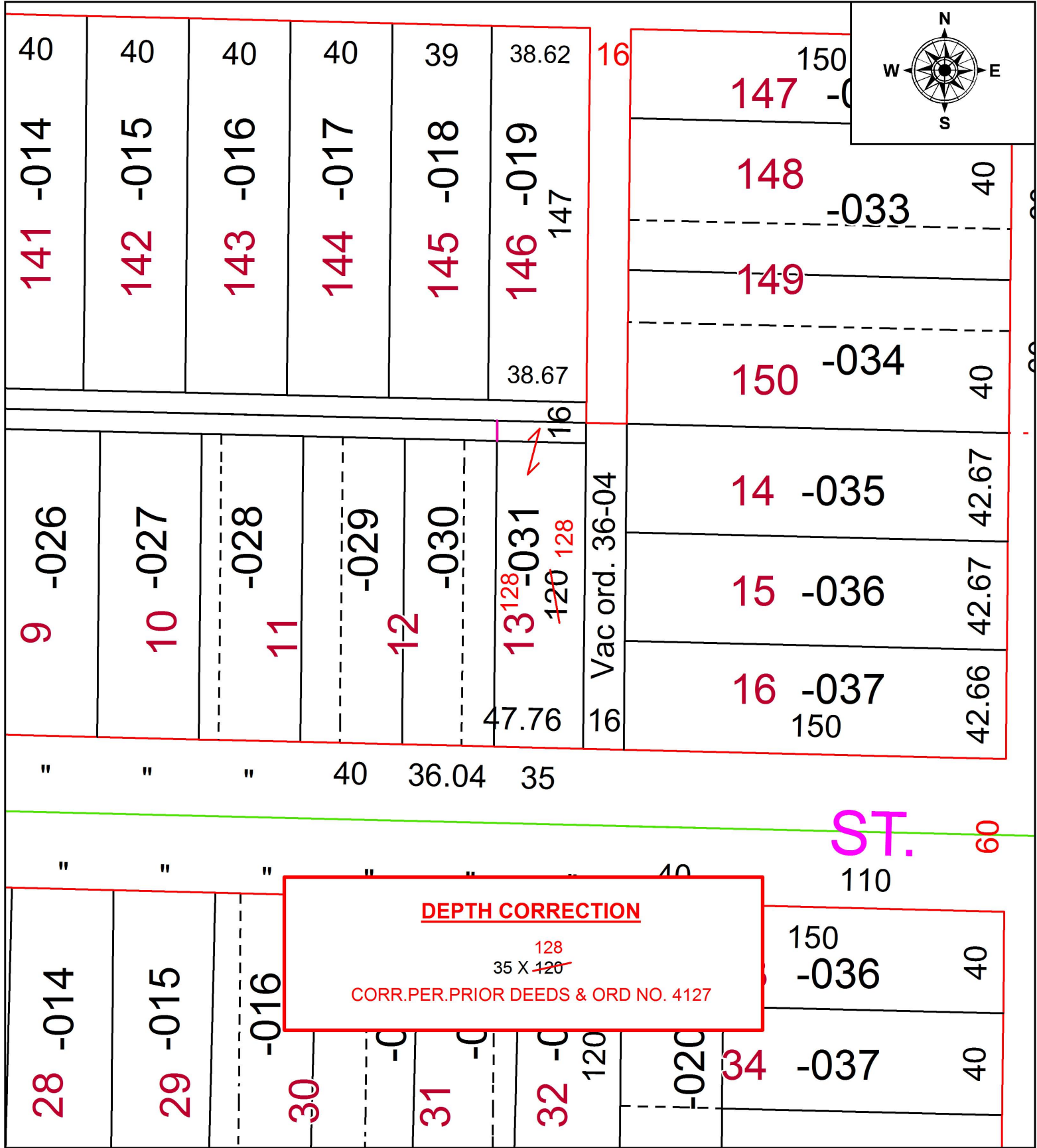


PARENT PARCEL: 02-01-006-138-031

CHILD PARCEL:

STARTING POINT: PT. OF S/L 13 IN DANIELS' & GLITSCHS' SUB.

20-04262-C



SPLITS/DEEDS PROCESSED
LORAIN COUNTY TAX MAP DEPARTMENT
226 MIDDLE AVE. ELYRIA, OH

SURVEYED BY: N/A
CLOSURE: N/A
MAP PAGE(S): 2-01-006
APPROVED BY: RRM DATE: 1-31-20
SCALE: 1" = 50 PRIOR INSTRUMENT: 20060154595