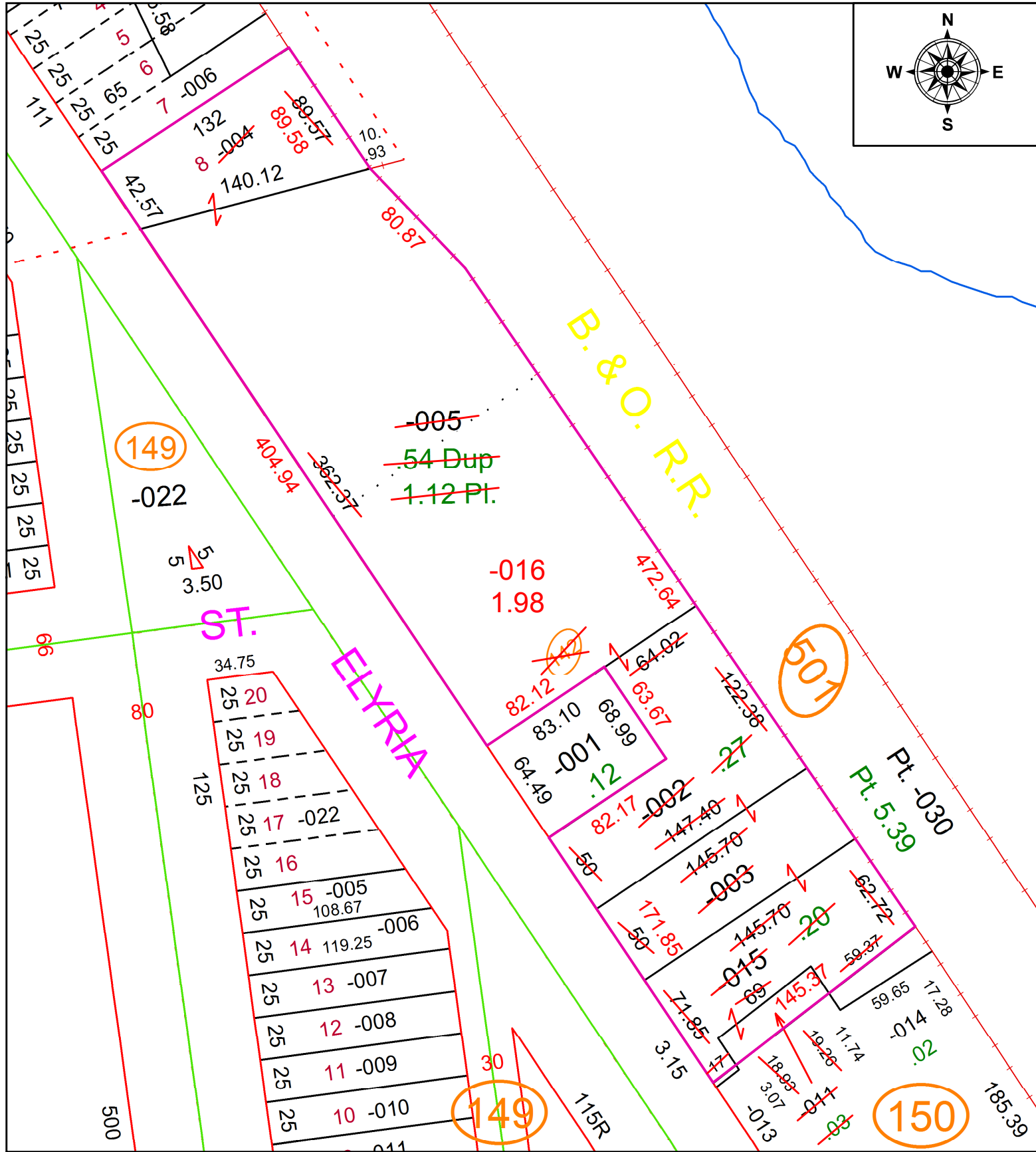
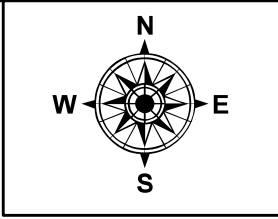


PARENT PARCEL: 02-01-003-142-004, -005, 02-01-003-150-002, -003, -011, -015

CHILD PARCEL: 02-01-003-150-016

STARTING POINT: NORTHEAST CORNER OF S/L 8 IN SELAH CHAMBERLAIN TRUSTEE ALLOT.

21-04258



SPLITS/DEEDS PROCESSED
LORAIN COUNTY TAX MAP DEPARTMENT
226 MIDDLE AVE. ELYRIA, OH

SURVEYED BY:	TIMOTHY R. DURR
CLOSURE:	1:1,650,691
MAP PAGE(S):	2-01-003
APPROVED BY:	RRM DATE: 2-22-21
SCALE:	1" = 75 PRIOR INSTRUMENT: 20130456416