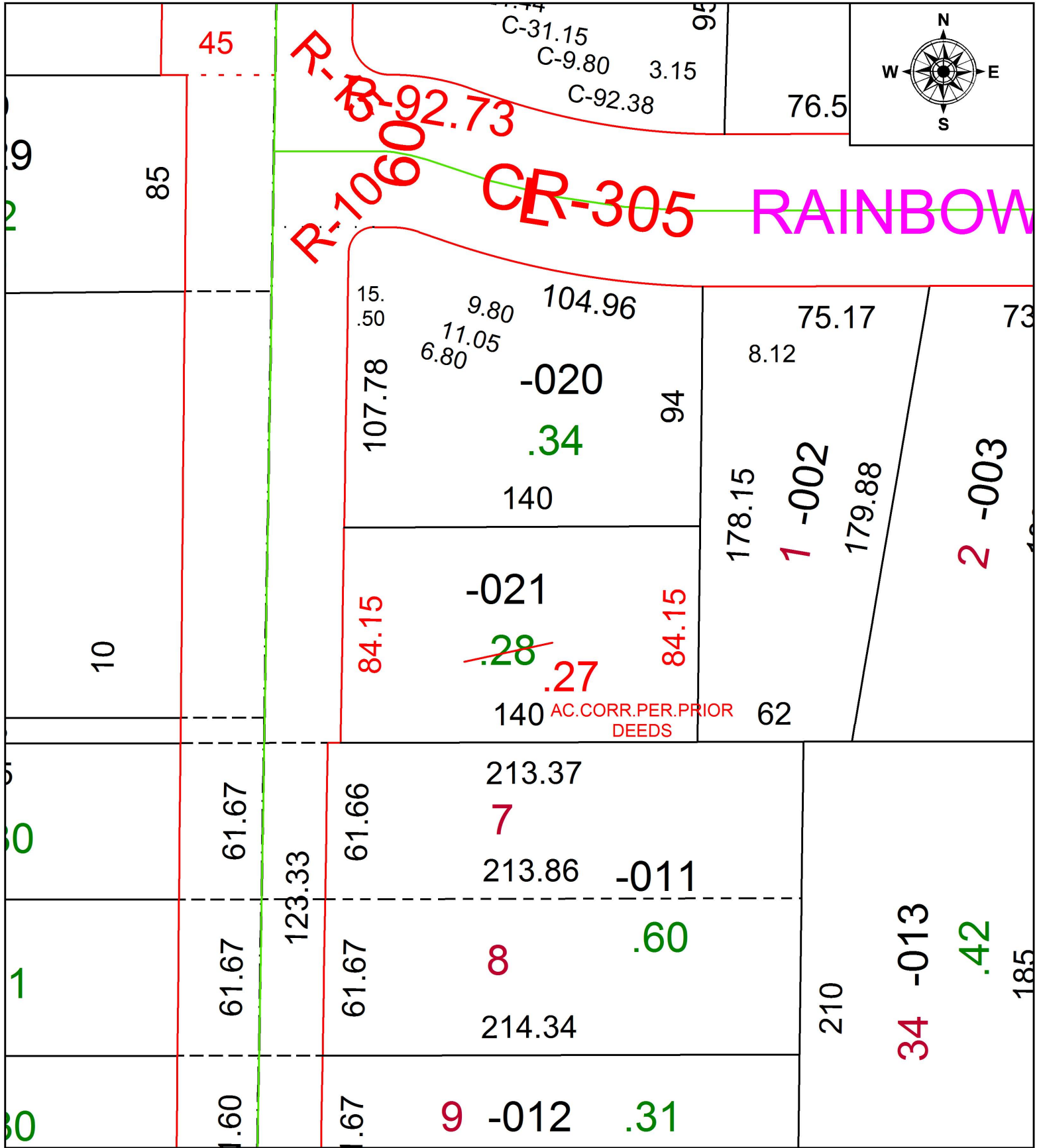


PARENT PARCEL: 05-00-022-106-021

CHILD PARCEL:

STARTING POINT: SOUTHWEST CORNER OF LAND CONVEYED TO ERNEST & DOROTHY BERMICK (DV 870/215)

20-04257-A



SPLITS/DEEDS PROCESSED
 LORAIN COUNTY TAX MAP DEPARTMENT
 226 MIDDLE AVE. ELYRIA, OH

SURVEYED BY: N/A
 CLOSURE: 1:2147483648
 MAP PAGE(S): 5-00-022
 APPROVED BY: RRM DATE: 1-29-20
 SCALE: 1" = 50 PRIOR INSTRUMENT: 20060119830