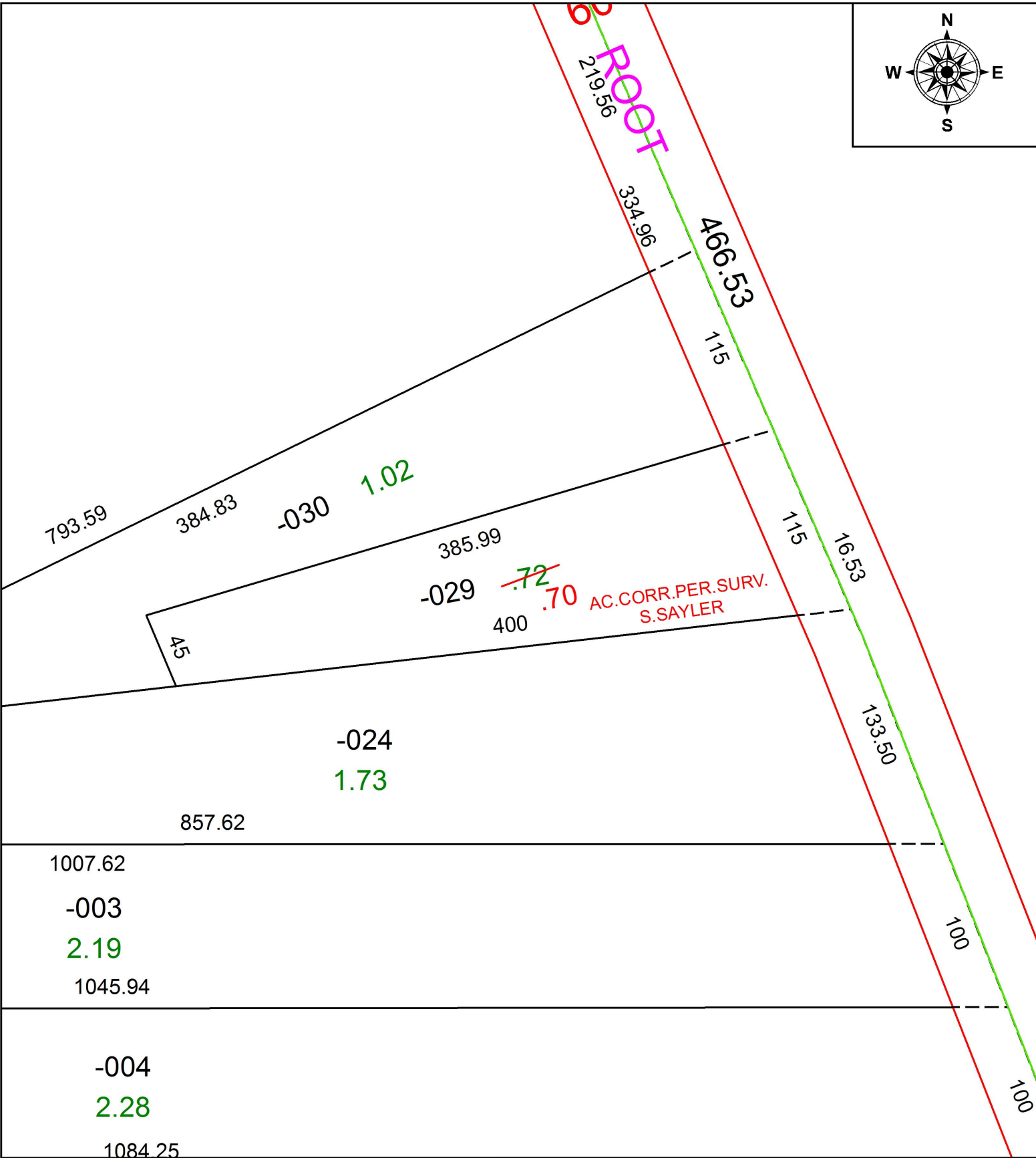
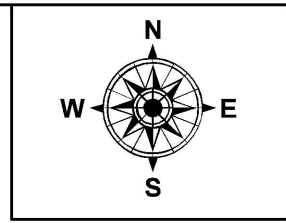


PARENT PARCEL: 11-00-010-000-029

CHILD PARCEL:

STARTING POINT: INTERSECTION OF C/L OF SPRAGUE RD. AND C/L OF ROOT RD.

20-04256-A



SPLITS/DEEDS PROCESSED
LORAIN COUNTY TAX MAP DEPARTMENT
226 MIDDLE AVE. ELYRIA, OH

SURVEYED BY: STUART W. SAYLER
CLOSURE: 1:642,956
MAP PAGE(S): 11-00-010
APPROVED BY: RRM DATE: 1-29-20
SCALE: 1" = 75' PRIOR INSTRUMENT: 20190739563