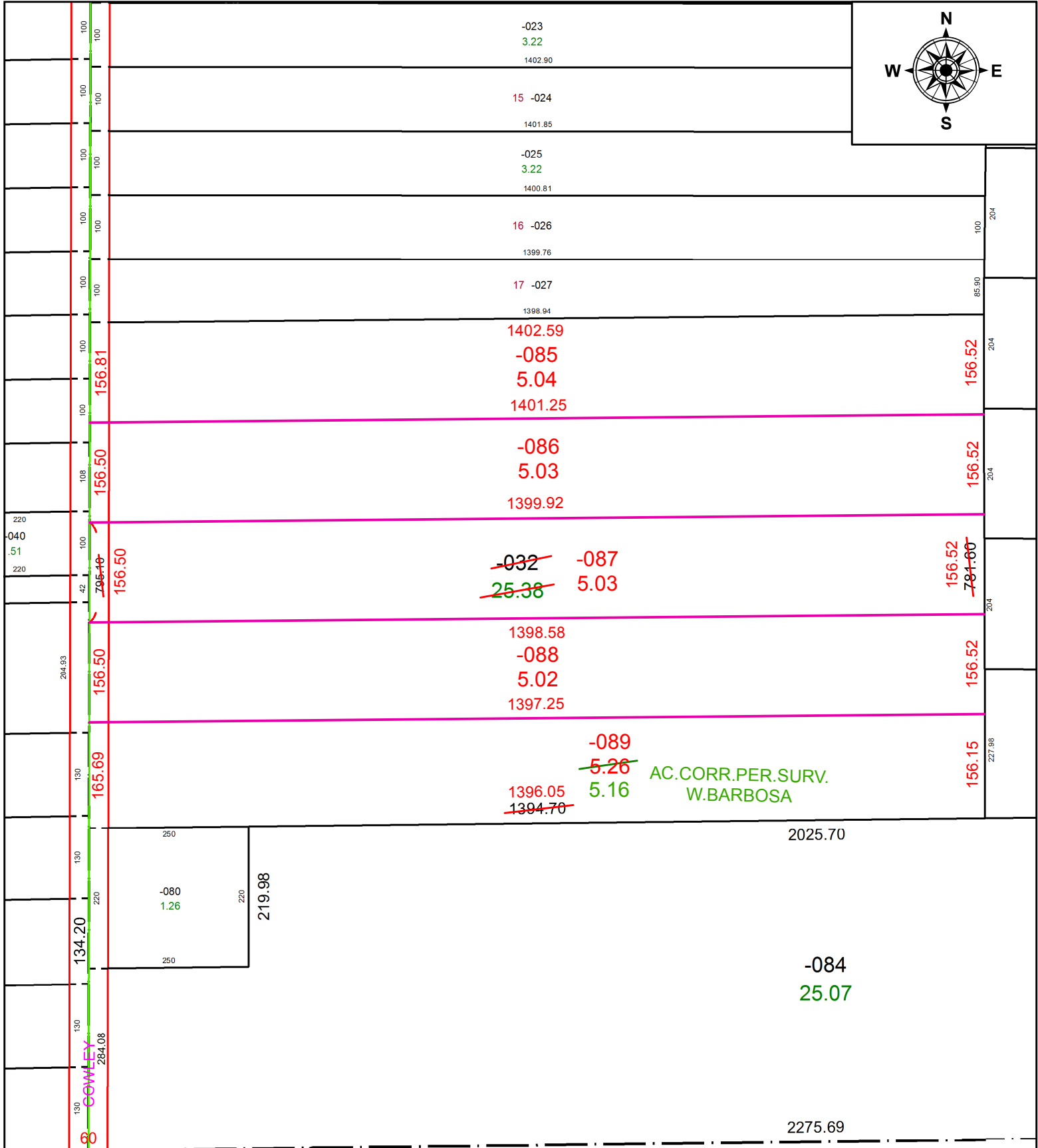


PARENT PARCEL: 11-00-005-000-032
 CHILD PARCEL: 11-00-005-000-085 THRU -089
 STARTING POINT: SOUTHWEST CORNER OF O.L.5

21-04253



SPLITS/DEEDS PROCESSED
 LORAIN COUNTY TAX MAP DEPARTMENT
 226 MIDDLE AVE. ELYRIA, OH

SURVEYED BY: WILFREDO BARBOSA
 CLOSURE: 1: 381,502
 MAP PAGE(S): 11-00-005
 APPROVED BY: RRM DATE: 2-11-21
 SCALE: 1" = 200 PRIOR INSTRUMENT: 20200779296