

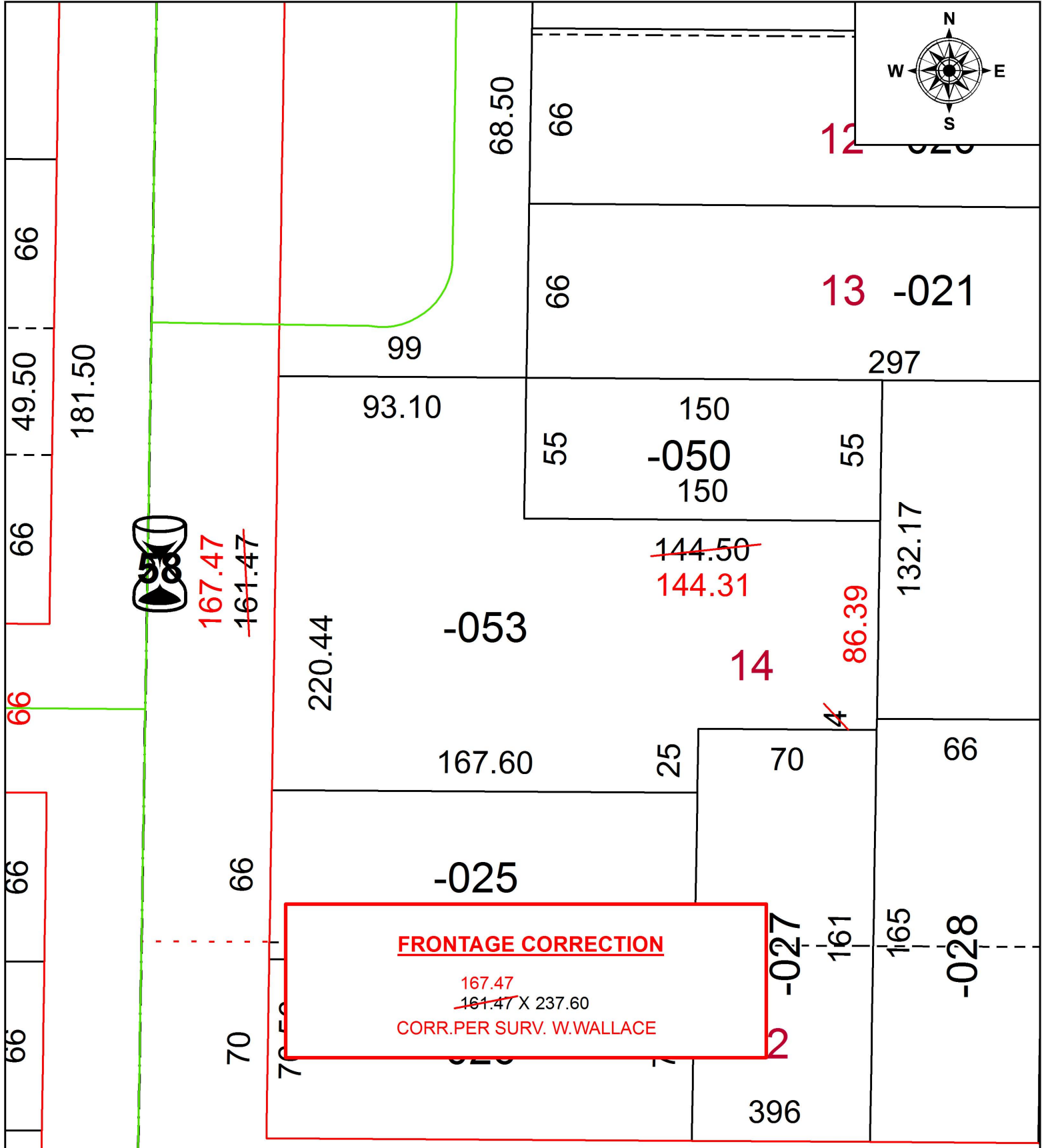
PARENT PARCEL: 18-00-022-101-053

CHILD PARCEL:

STARTING POINT:

INTERSECTION OF EAST LINE OF S. MAIN ST. AND NORTH LINE OF DICKSON ST.

20-04251-C



SPLITS/DEEDS PROCESSED
 LORAIN COUNTY TAX MAP DEPARTMENT
 226 MIDDLE AVE. ELYRIA, OH

SURVEYED BY: WILLIAM R. WALLACE

CLOSURE: 1:410,276

MAP PAGE(S): 18-00-022

APPROVED BY: RRM DATE: 1-29-20

SCALE: 1" = 50 PRIOR INSTRUMENT: 20150553402