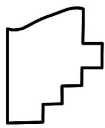
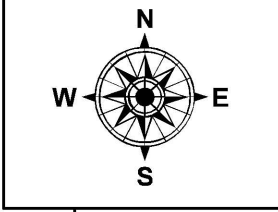
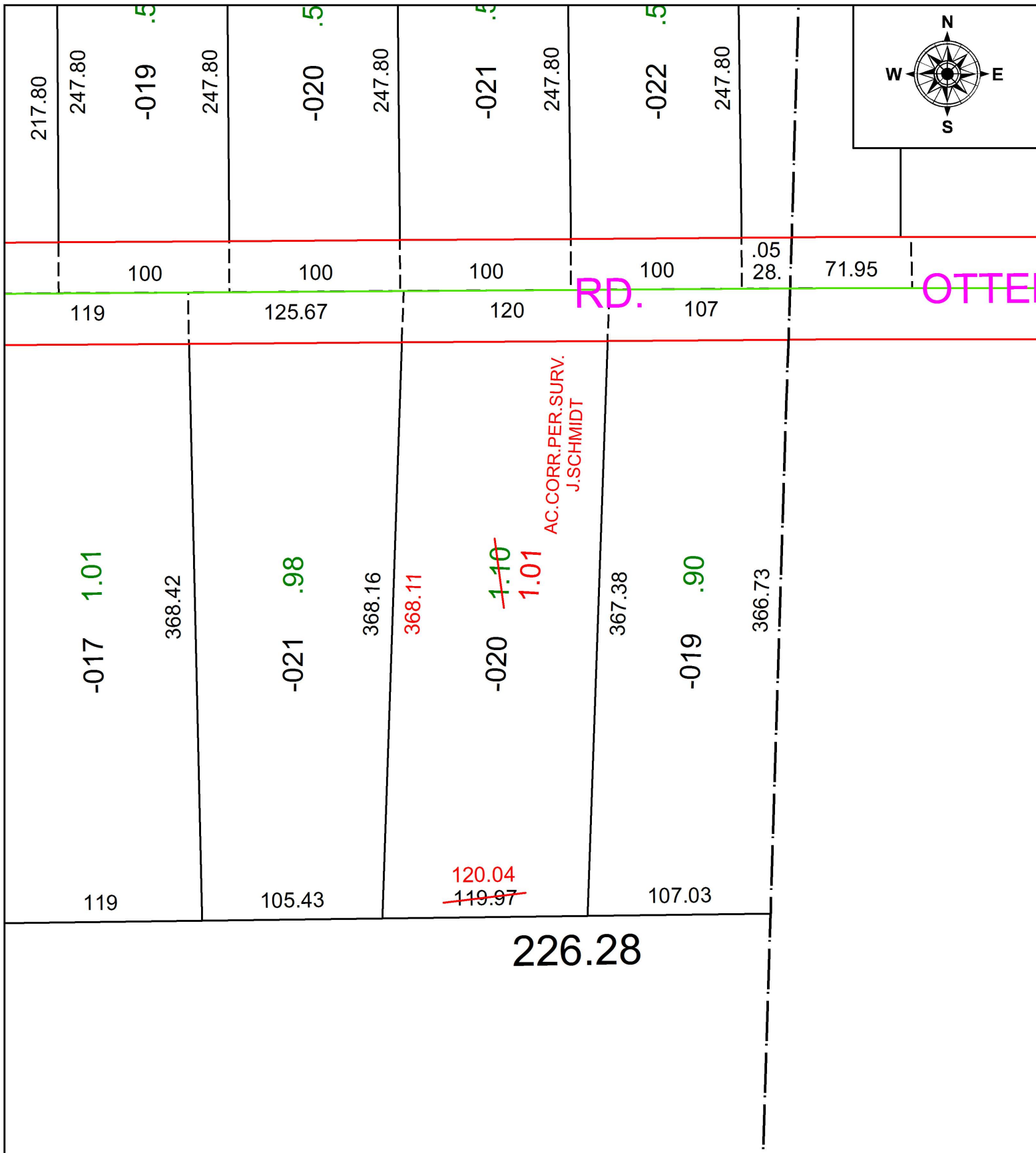


PARENT PARCEL: 07-00-044-104-020

CHILD PARCEL:

STARTING POINT: INTERSECTION OF C/L OF OTTEN RD, AND EAST LINE OF O.L. 44

20-04250-A



SPLITS/DEEDS PROCESSED
 LORAIN COUNTY TAX MAP DEPARTMENT
 226 MIDDLE AVE. ELYRIA, OH

SURVEYED BY: JAMES H. SCHMIDT
 CLOSURE: 1:188,487
 MAP PAGE(S): 7-00-044
 APPROVED BY: RRM DATE: 1-28-20
 SCALE: 1" = 75' PRIOR INSTRUMENT: 20190742277