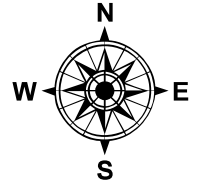
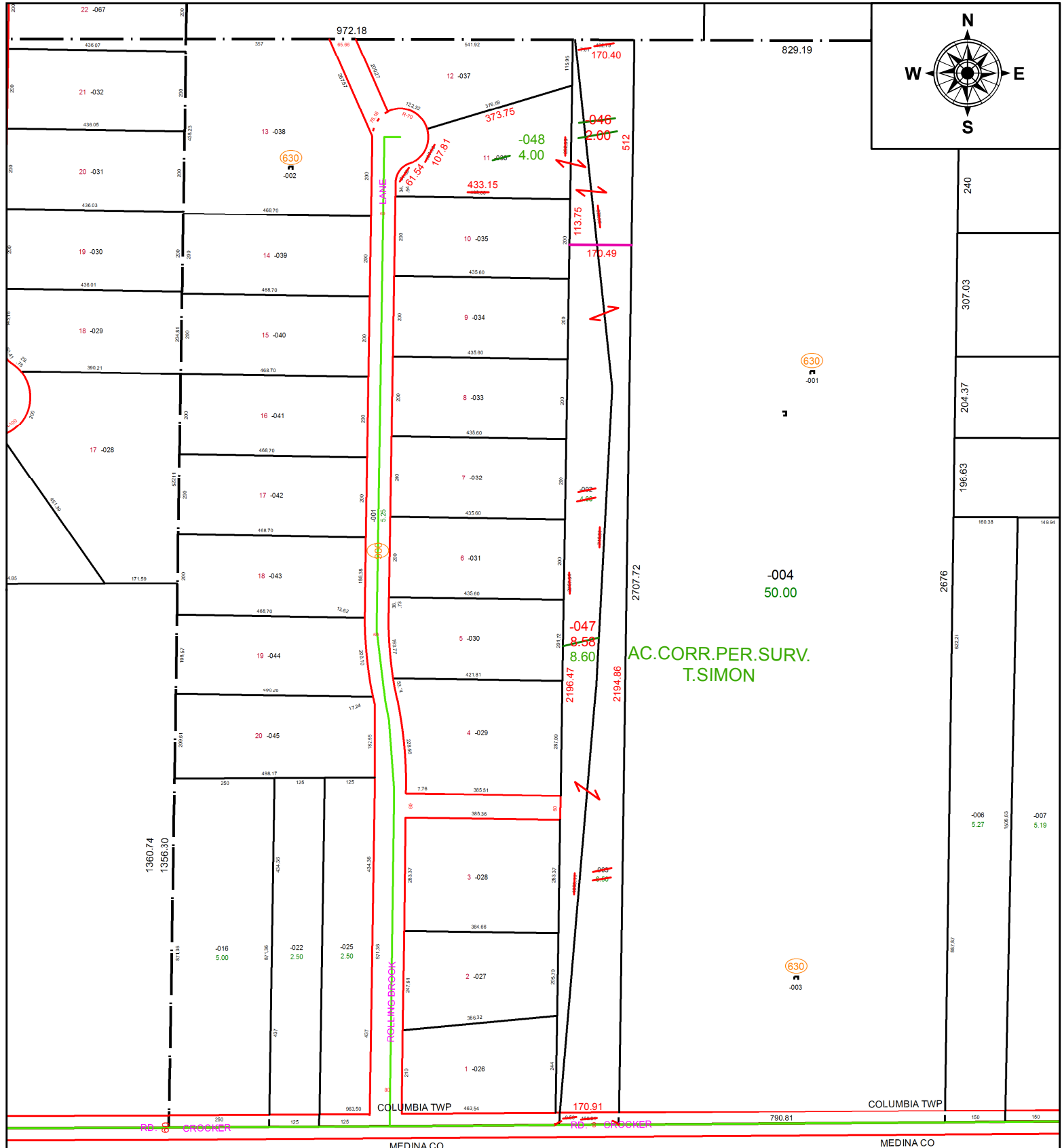


PARENT PARCEL: 12-00-070-000-002, -003, -036

CHILD PARCEL: 12-00-070-000-046 THRU -048

STARTING POINT: NORTHEAST CORNER OF S/L 12 IN ROLLING BROOK SUB.

21-04249



**SPLITS/DEEDS PROCESSED**  
 LORAIN COUNTY TAX MAP DEPARTMENT  
 226 MIDDLE AVE. ELYRIA, OH

**SURVEYED BY:** THOMAS A. SIMON  
**CLOSURE:** 1: 964,486  
**MAP PAGE(S):** 12-00-070  
**APPROVED BY:** RRM **DATE:** 2-5-21  
**SCALE:** 1" = 325 **PRIOR INSTRUMENT:** 20170634259