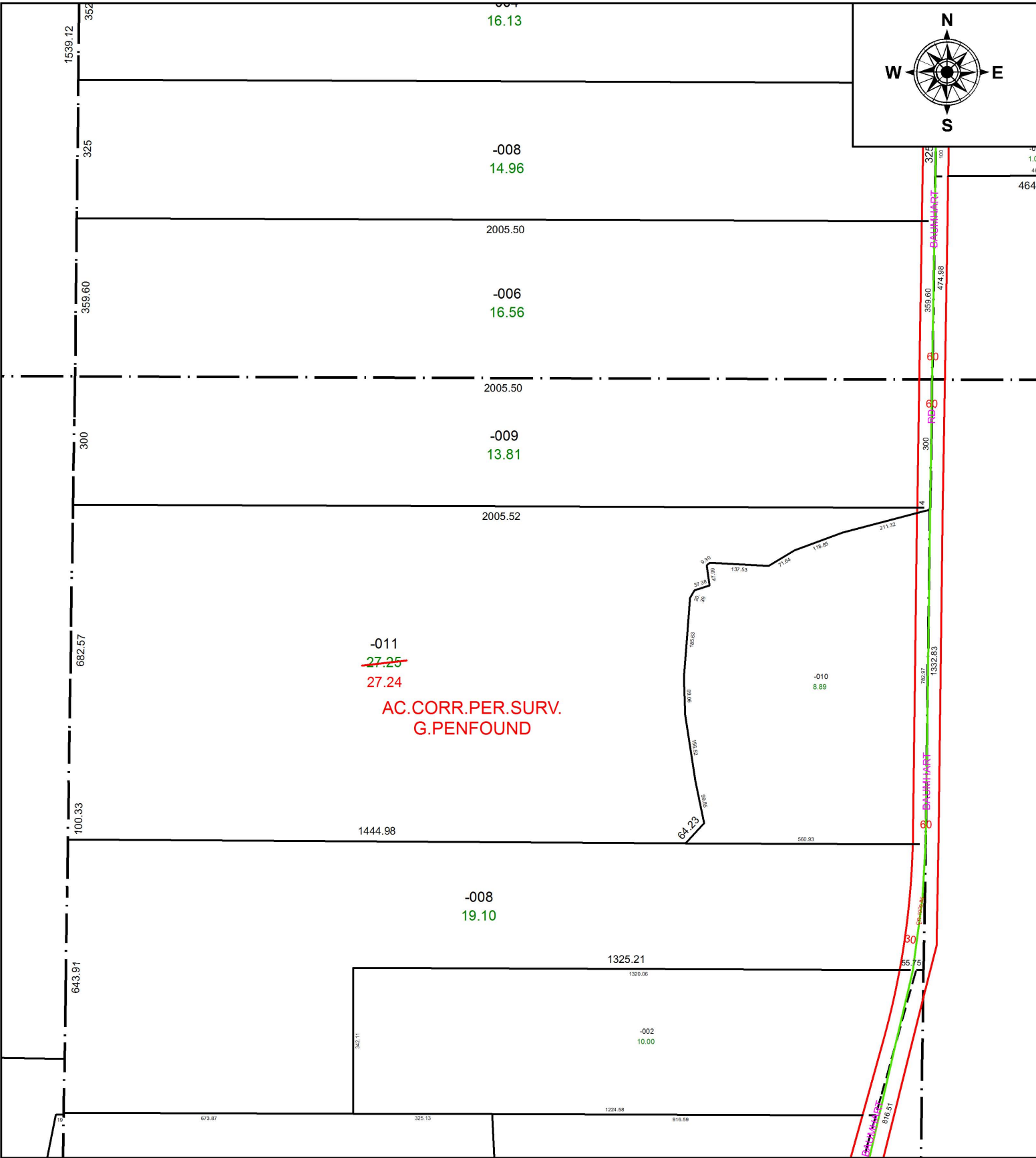
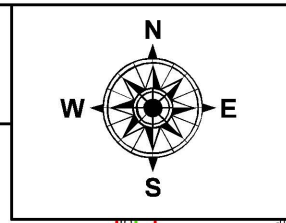


PARENT PARCEL: 08-13-012-000-011

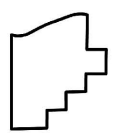
CHILD PARCEL:

STARTING POINT: NORTHEAST CORNER OF O.L. 12 TR. 13

20-04248-A



-011
~~27.25~~
27.24
AC. CORR. PER. SURV.
G. PENFOUND



SPLITS/DEEDS PROCESSED
LORAIN COUNTY TAX MAP DEPARTMENT
226 MIDDLE AVE. ELYRIA, OH

SURVEYED BY: GARY E. PENFOUND
CLOSURE: 1:277,565
MAP PAGE(S): 8-13-012
APPROVED BY: RRM DATE: 1-28-20
SCALE: 1" = 300 PRIOR INSTRUMENT: OR 453/900