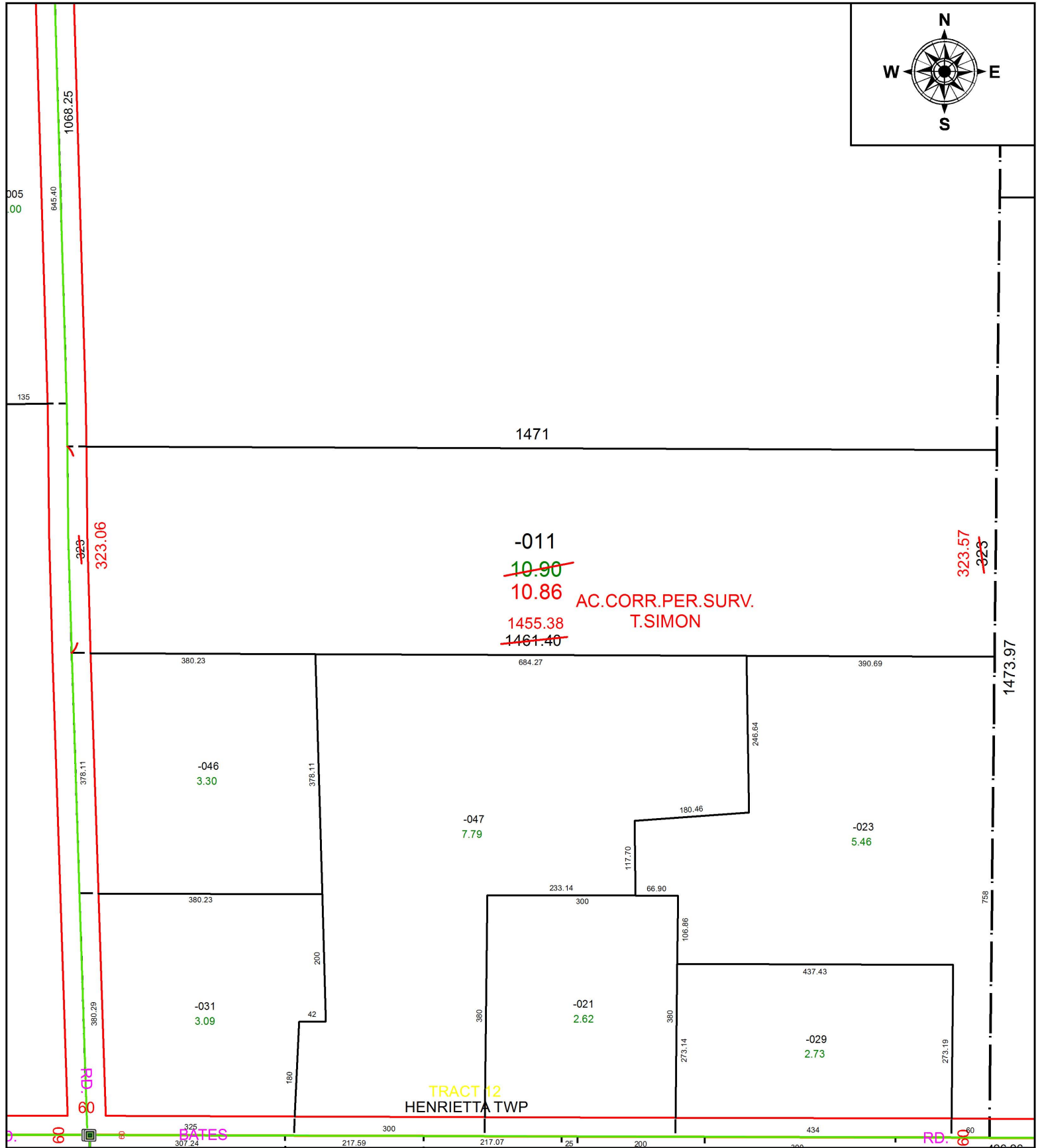


PARENT PARCEL: 08-12-012-000-011

CHILD PARCEL:

STARTING POINT: INTERSECTION OF C/L OF BATES RD. AND C/L OF GORE ORPHANAGE RD.

20-04247-A



~~-011~~
~~10.90~~
10.86 AC. CORR. PER SURV.
T. SIMON
1455.38
~~1461.40~~

SPLITS/DEEDS PROCESSED
LORAIN COUNTY TAX MAP DEPARTMENT
226 MIDDLE AVE. ELYRIA, OH

SURVEYED BY: THOMAS A. SIMON
CLOSURE: 1:580,249
MAP PAGE(S): 8-12-012
APPROVED BY: RRM DATE: 1-28-20
SCALE: 1" = 200 PRIOR INSTRUMENT: OR 1399/292