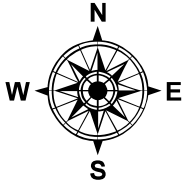
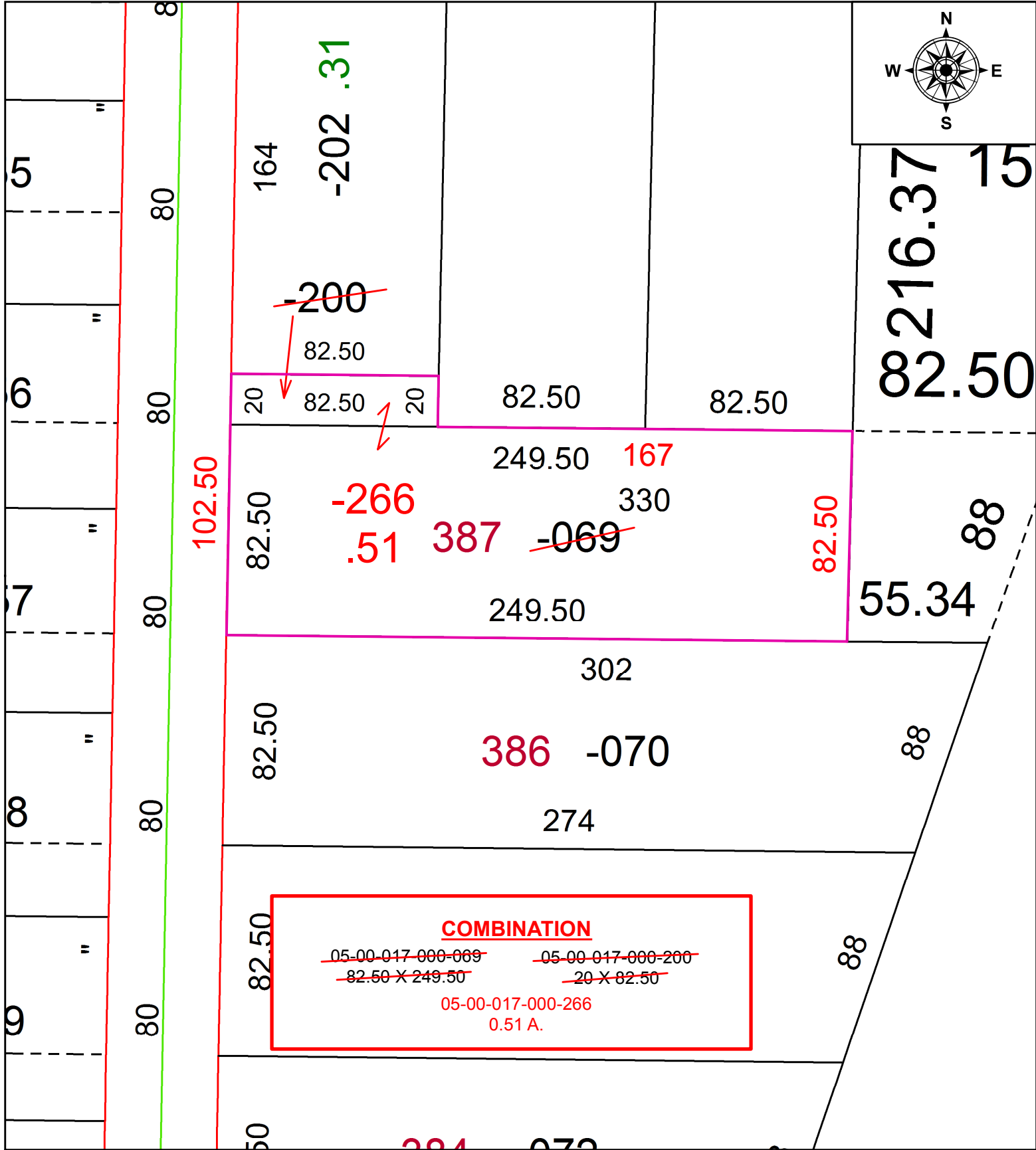


PARENT PARCEL: 05-00-017-000-069, -200

CHILD PARCEL: 05-00-017-000-266

STARTING POINT: INTERSECTION OF EAST LINE OF CROCKER ST. AND SOUTH LINE OF MILAN AVE.

21-04245



SPLITS/DEEDS PROCESSED
 LORAIN COUNTY TAX MAP DEPARTMENT
 226 MIDDLE AVE. ELYRIA, OH

SURVEYED BY: RICHARD A, THOMPSON JR.
 CLOSURE: 1: 2147483648
 MAP PAGE(S): 5-00-017
 APPROVED BY: RRM DATE: 1-29-21
 SCALE: 1" = 50 PRIOR INSTRUMENT: 20190726684