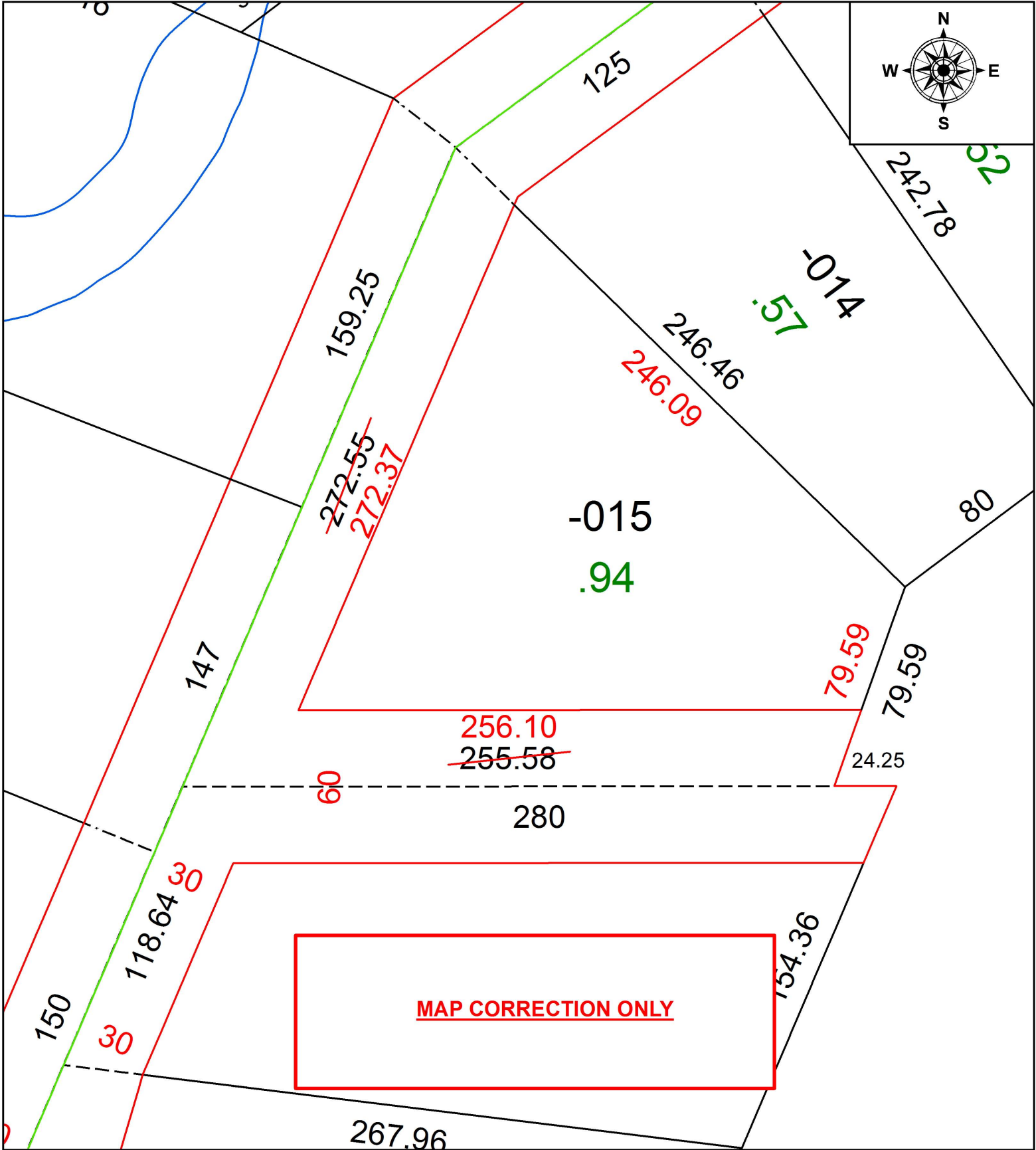


PARENT PARCEL: 05-00-021-103-015

CHILD PARCEL:

20-04245-D

STARTING POINT: INTERSECTION OF C/L OF N. MAIN ST. AND C/L OF COOPER FOSTER PARK RD.



SPLITS/DEEDS PROCESSED
 LORAIN COUNTY TAX MAP DEPARTMENT
 226 MIDDLE AVE. ELYRIA, OH

SURVEYED BY: MICHAEL P. SPELLACY

CLOSURE: 1:166,991

MAP PAGE(S): 5-00-021

APPROVED BY: RRM DATE: 1-23-20

SCALE: 1" = 50 PRIOR INSTRUMENT: 20160605839