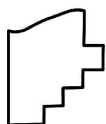
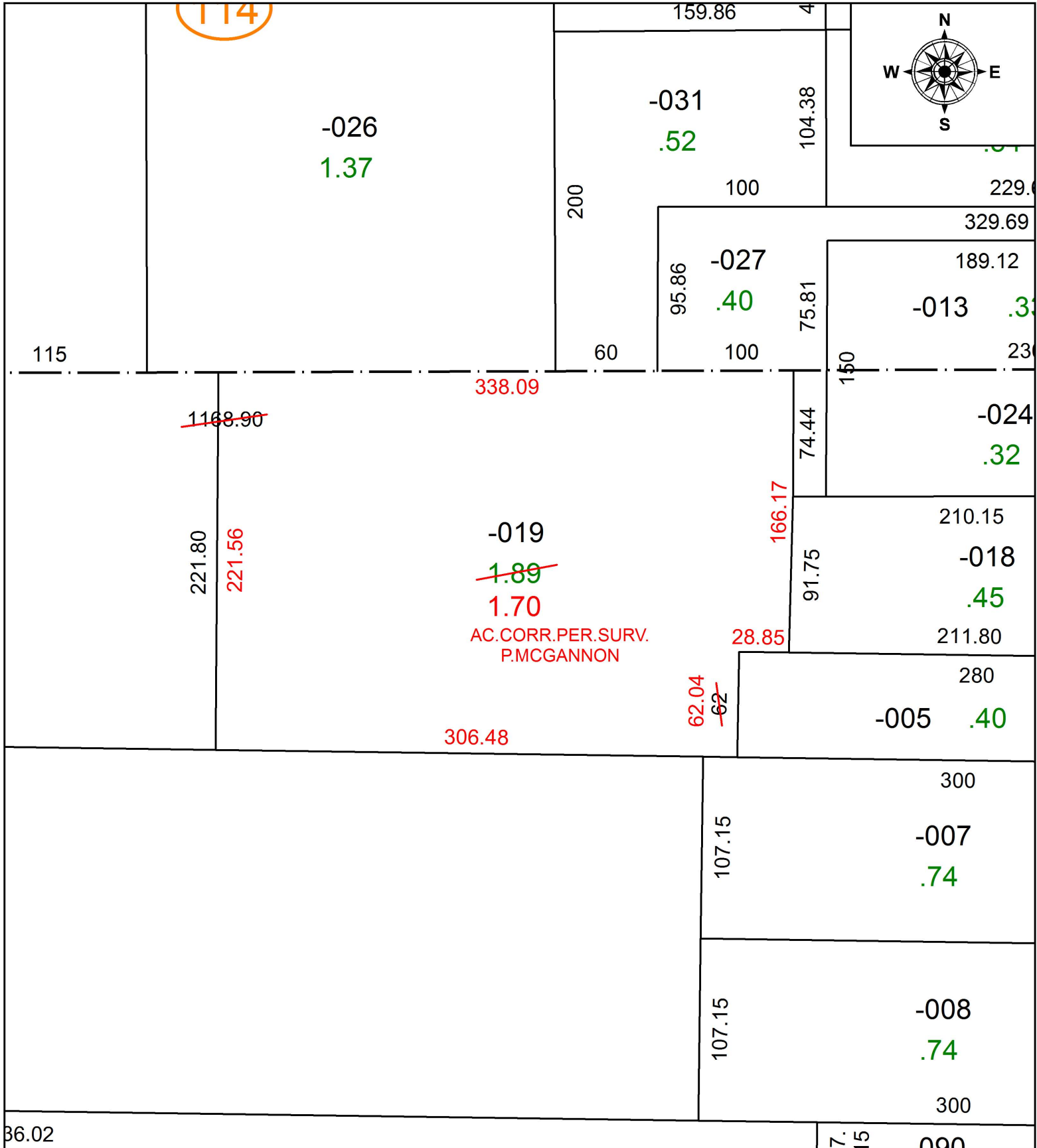


PARENT PARCEL: 02-02-018-000-019

CHILD PARCEL:

STARTING POINT: INTERSECTION OF C/L OF S.R.58 AND C/L OF W.21ST ST.

20-04243-A



SPLITS/DEEDS PROCESSED
LORAIN COUNTY TAX MAP DEPARTMENT
226 MIDDLE AVE. ELYRIA, OH

SURVEYED BY: PATRICK A. MCGANNON
CLOSURE: 1:138,965
MAP PAGE(S): 2-02-018
APPROVED BY: RRM DATE: 1-13-20
SCALE: 1" = 75' PRIOR INSTRUMENT: 20150544985