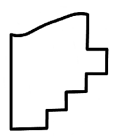
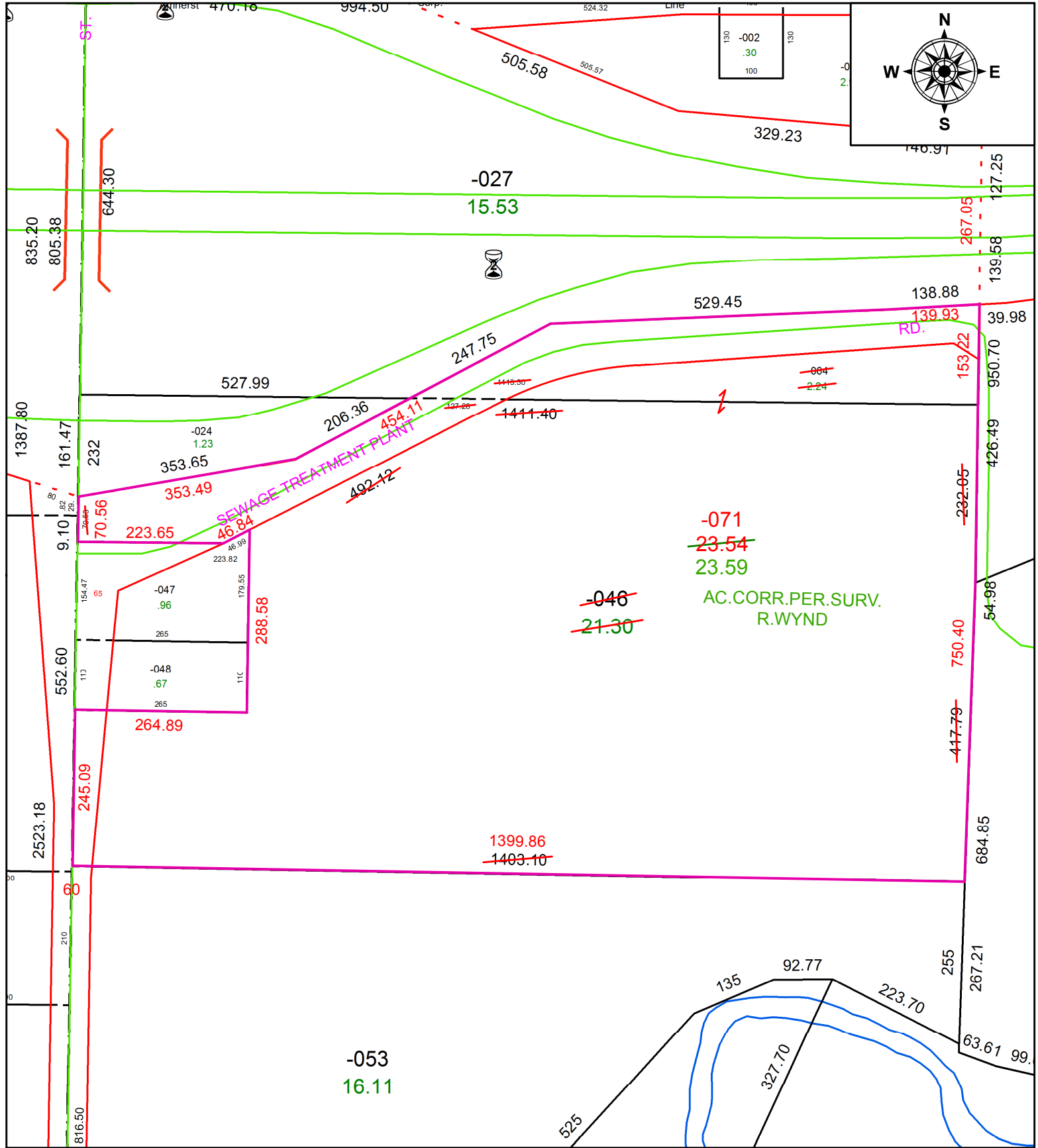


PARENT PARCEL: 05-00-019-000-046, -064

CHILD PARCEL: 05-00-019-000-071

STARTING POINT: NORTHEAST CORNER OF O.L.19

21-04242



SPLITS/DEEDS PROCESSED
 LORAIN COUNTY TAX MAP DEPARTMENT
 226 MIDDLE AVE. ELYRIA, OH

SURVEYED BY: ROBERT S, WYND
CLOSURE: 1:768,432
MAP PAGE(S): 5-00-019
APPROVED BY: RRM **DATE:** 1-26-21
SCALE: 1" = 200 **PRIOR INSTRUMENT:** 20090289225