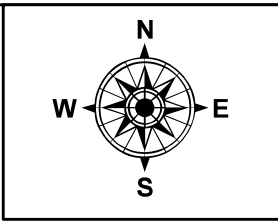
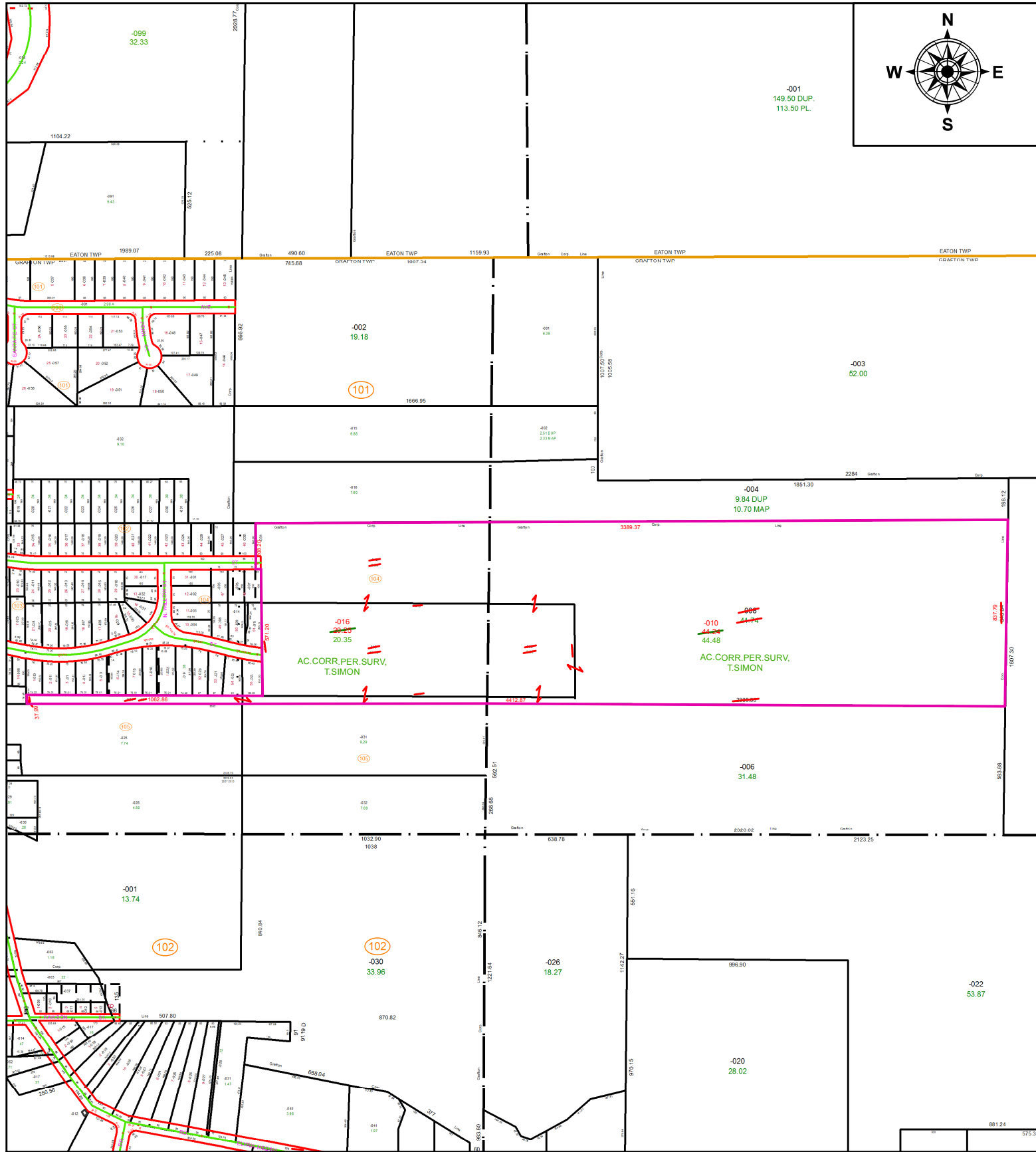


PARENT PARCEL: 16-00-003-104-012, -013, 16-00-003-105-024, 16-00-004-000-008, -009

CHILD PARCEL: 16-00-003-104-016, 16-00-004-000-010

STARTING POINT: NORTHEAST CORNER OF S/L 46 IN MYLES KNECHTGES SUB. NO.3

21-04240



SPLITS/DEEDS PROCESSED
 LORAIN COUNTY TAX MAP DEPARTMENT
 226 MIDDLE AVE. ELYRIA, OH

SURVEYED BY: THOMAS A. SIMON
CLOSURE: 1: 738,436
MAP PAGE(S): 16-00-003
APPROVED BY: RRM **DATE:** 1-26-21
SCALE: 1" = 575 **PRIOR INSTRUMENT:** 20190739544