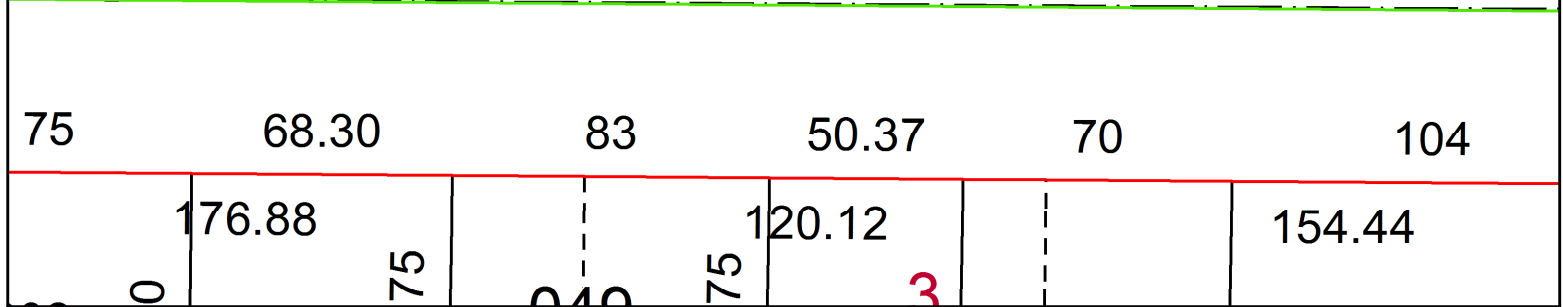
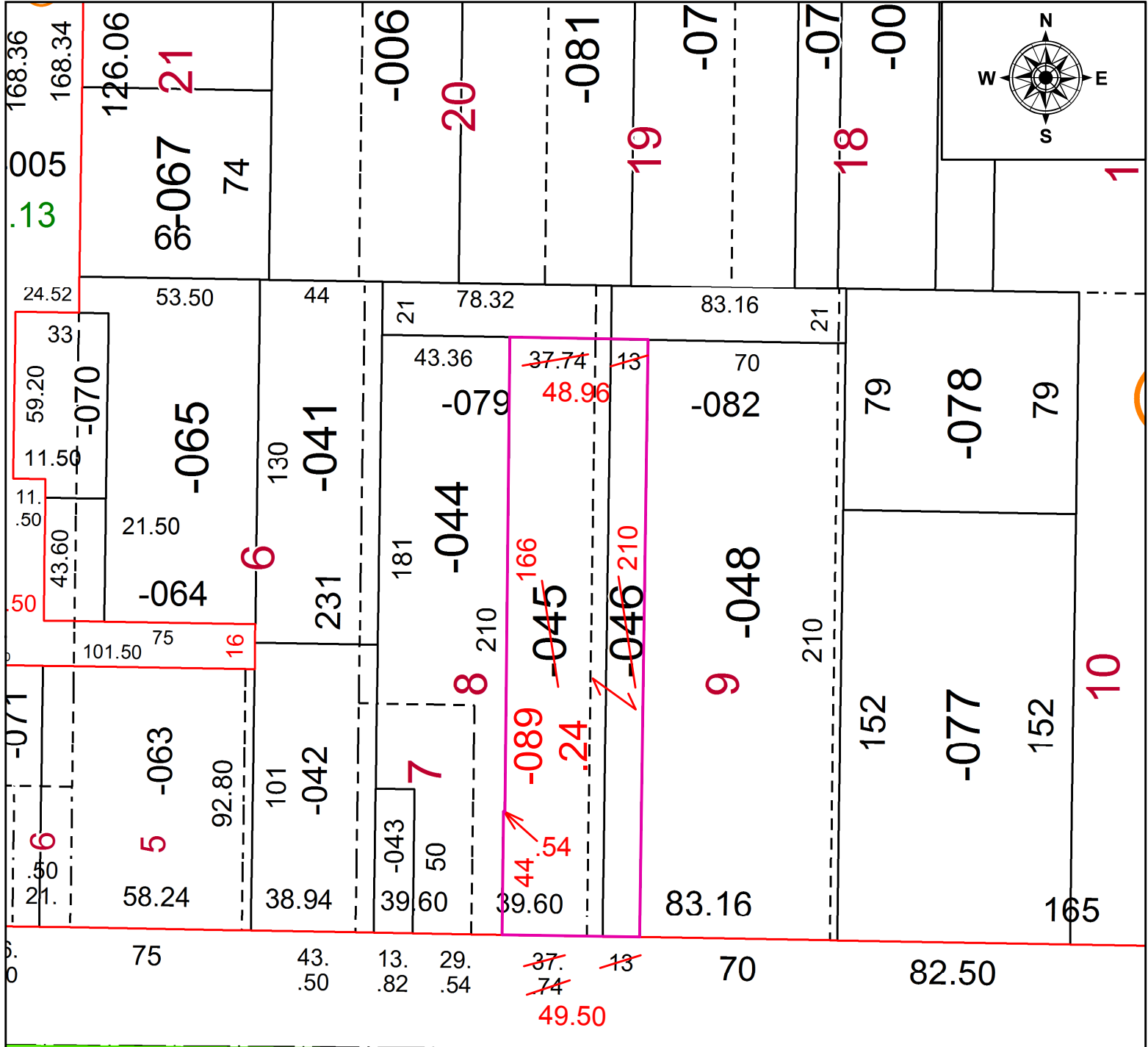


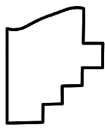
PARENT PARCEL: 18-00-021-110-045, -046

CHILD PARCEL: 18-00-021-110-089

STARTING POINT: SOUTHWEST CORNER OF O.L.21

21-04236



 **SPLITS/DEEDS PROCESSED**
 LORAIN COUNTY TAX MAP DEPARTMENT
 226 MIDDLE AVE. ELYRIA, OH

SURVEYED BY: THOMAS M. SNEZEK
CLOSURE: 1: 300,368
MAP PAGE(S): 18-00-021
APPROVED BY: RRM **DATE:** 1-13-21
SCALE: 1" = 50' **PRIOR INSTRUMENT:** 20190720750