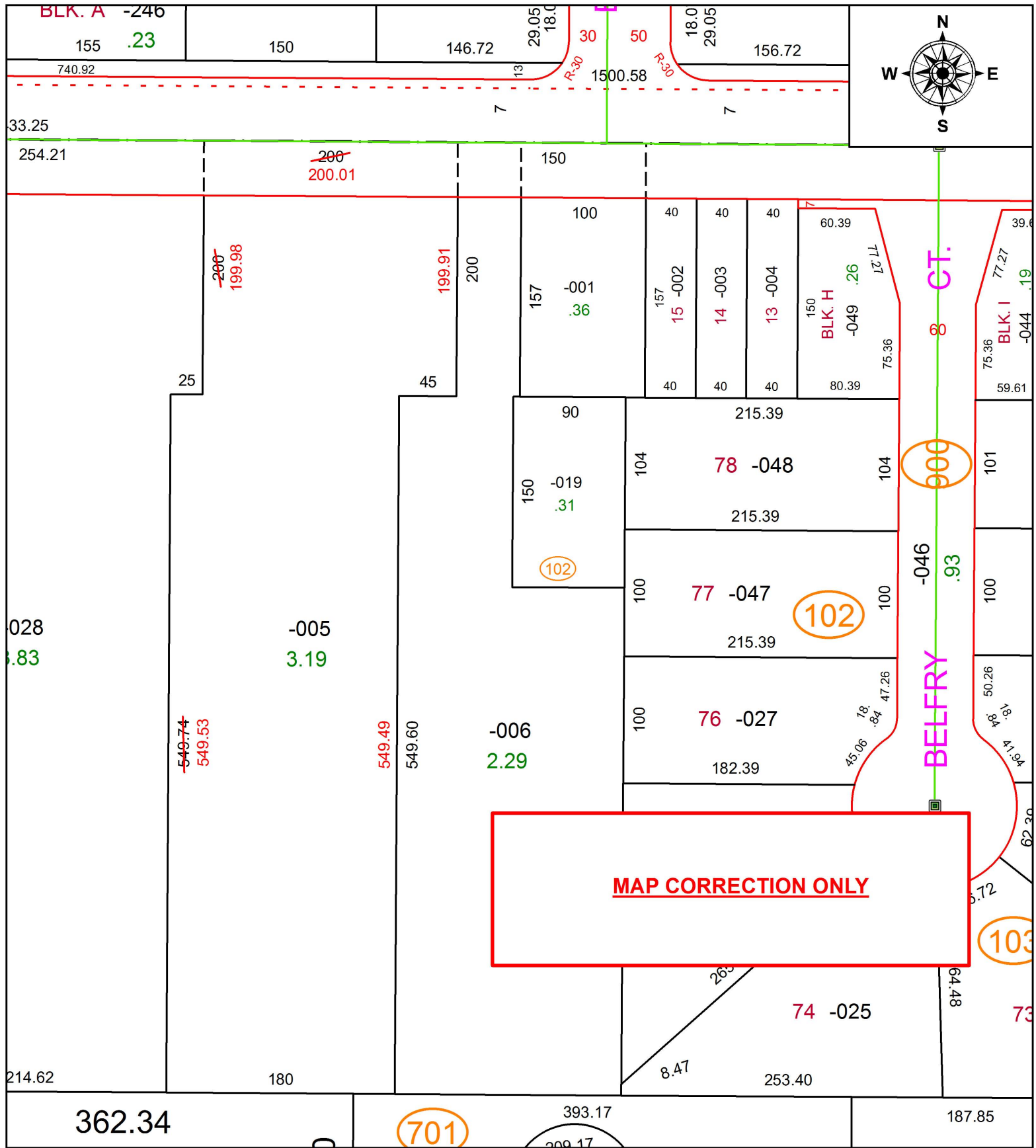


PARENT PARCEL: 04-00-020-101-005

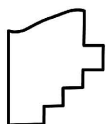
CHILD PARCEL:

STARTING POINT: INTERSECTION OF C/L OF WALKER RD. AND C/L OF JAYCOX RD.

19-04233-D



**MAP CORRECTION ONLY**



**SPLITS/DEEDS PROCESSED**  
LORAIN COUNTY TAX MAP DEPARTMENT  
226 MIDDLE AVE. ELYRIA, OH

SURVEYED BY: MATTHEW W. SERMERSHEIM  
 CLOSURE: 1:211,575  
 MAP PAGE(S): 4-00-020  
 APPROVED BY: RRM DATE: 12-17-19  
 SCALE: 1" = 100 PRIOR INSTRUMENT: 20150549080