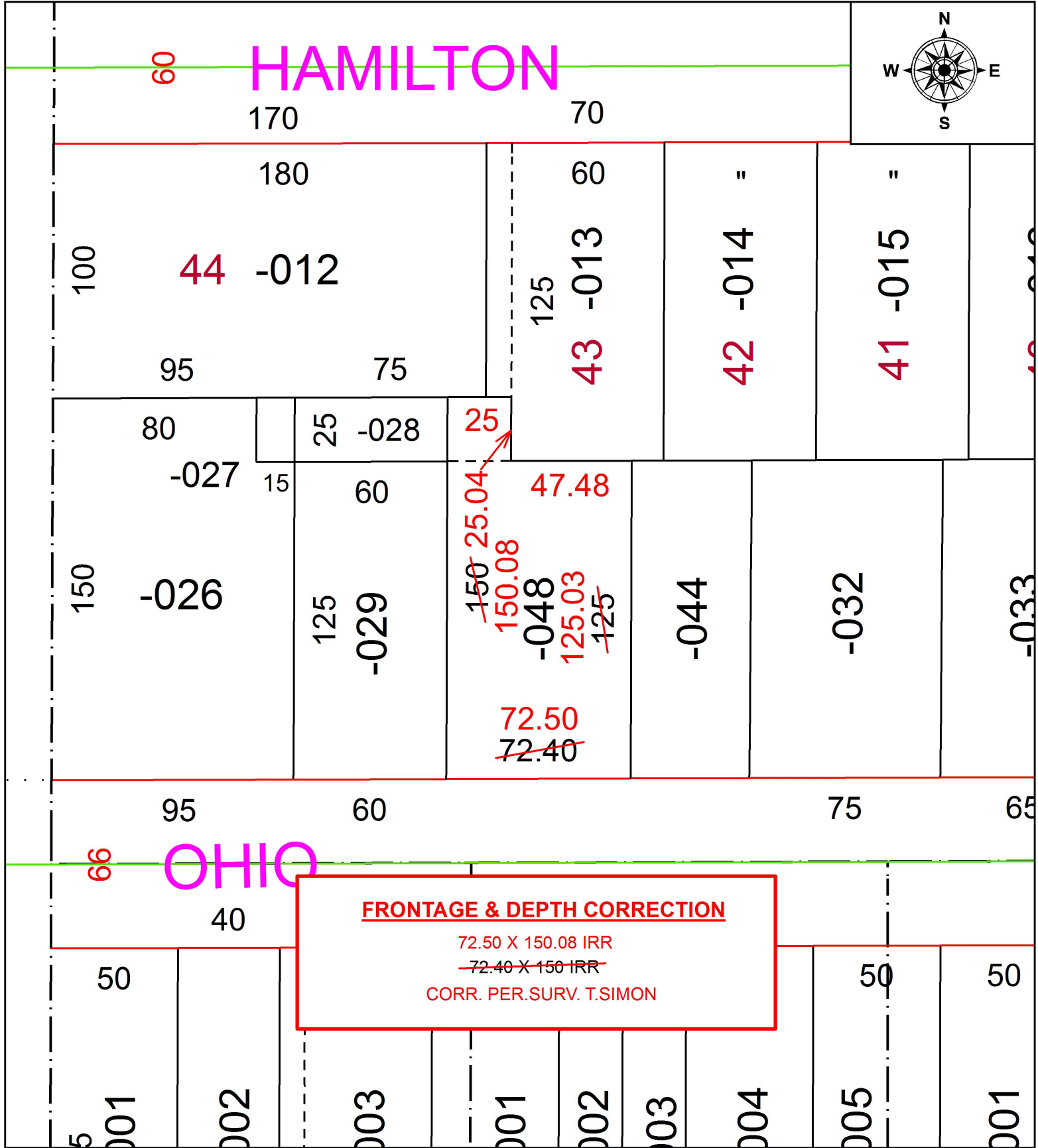


PARENT PARCEL: 06-25-157-000-048

CHILD PARCEL:

STARTING POINT: INTERSECTION OF C/L OF ST. CLAIR ST. & C/L OF OHIO ST.

19-04232-D



SPLITS/DEEDS PROCESSED
LORAIN COUNTY TAX MAP DEPARTMENT
226 MIDDLE AVE. ELYRIA, OH

SURVEYED BY: THOMAS A. SIMON
 CLOSURE: 1:43,401
 MAP PAGE(S): 6-25-157
 APPROVED BY: RRM DATE: 12-11-19
 SCALE: 1" = 50 PRIOR INSTRUMENT: 20190732674