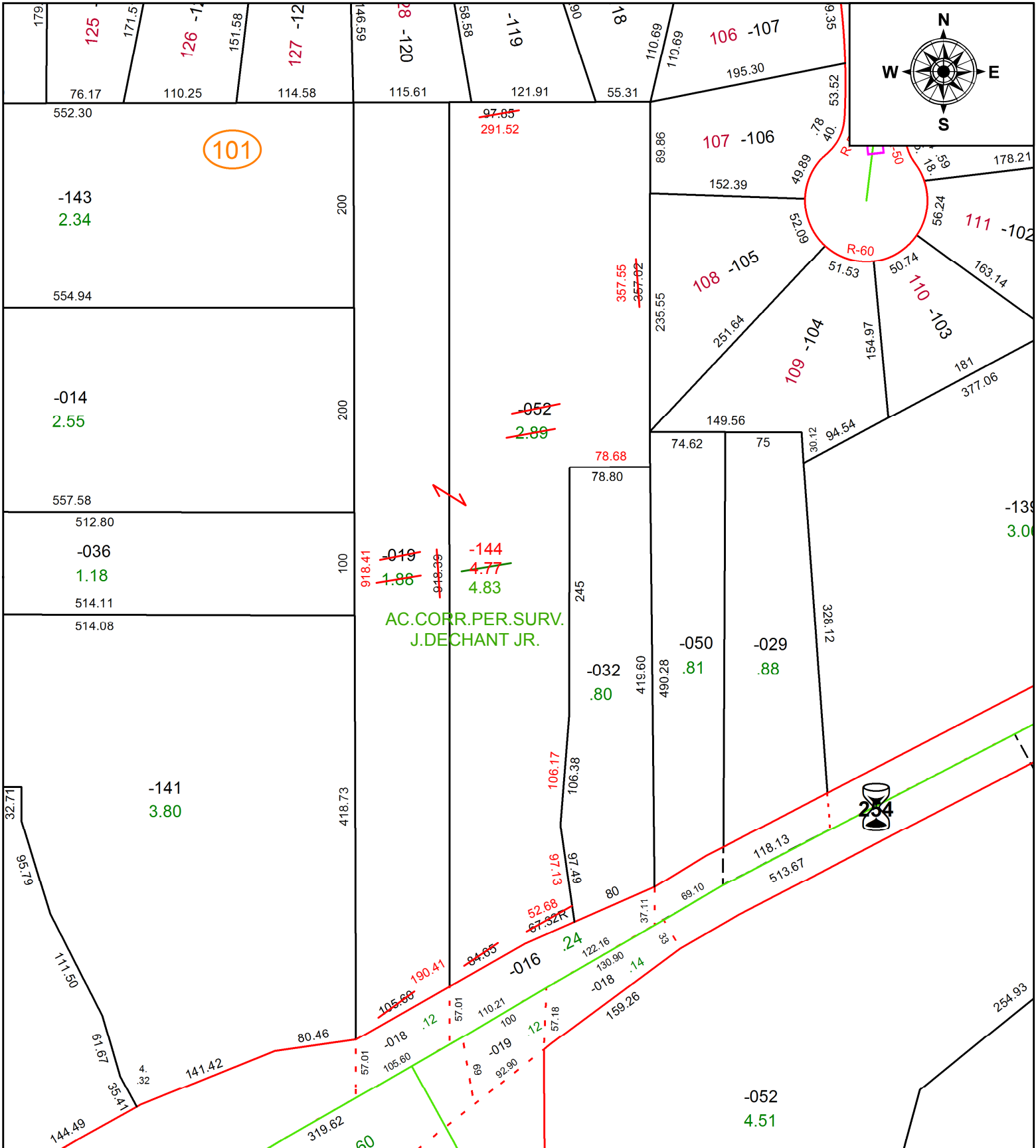


PARENT PARCEL: 03-00-002-101-019, -052

CHILD PARCEL: 03-00-002-101-144

STARTING POINT: INTERSECTION OF C/L OF S.R.254 AND C/L OF ABBE RD.

20-04229



AC. CORR. PER. SURV.
J. DECHANT JR.



SPLITS/DEEDS PROCESSED
LORAIN COUNTY TAX MAP DEPARTMENT
226 MIDDLE AVE. ELYRIA, OH

SURVEYED BY:	JOHN A. DECHANT JR.
CLOSURE:	1: 1,320,748
MAP PAGE(S):	3-00-002
APPROVED BY:	RRM
DATE:	12-17-20
SCALE:	1" = 125
PRIOR INSTRUMENT:	20160575202