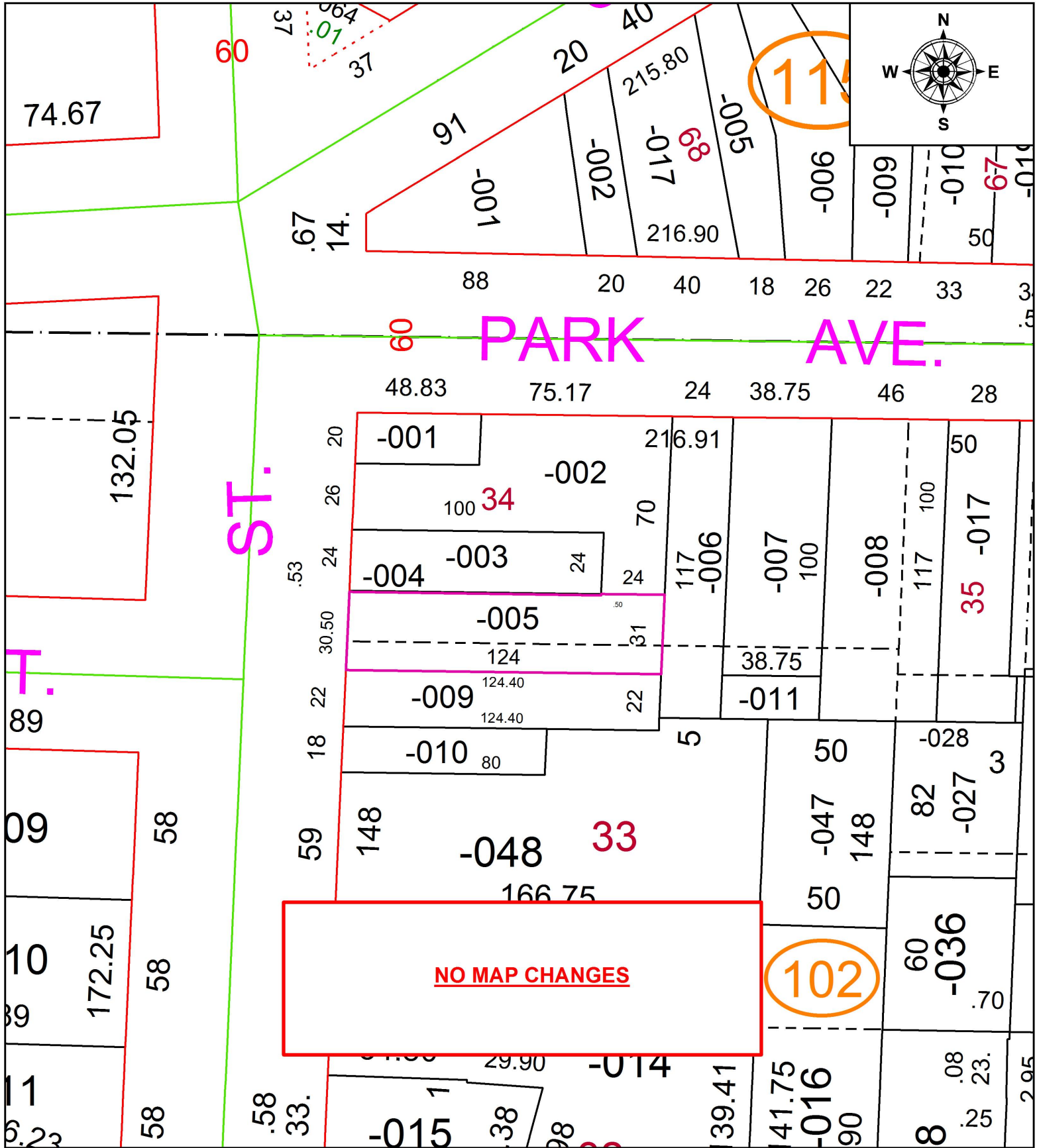


PARENT PARCEL: 05-00-024-102-005

CHILD PARCEL:

STARTING POINT: INTERSECTION OF SOUTH LINE OF PARK AVE AND EAST LINE OF S. MAIN ST.

19-04228-D



SPLITS/DEEDS PROCESSED
 LORAIN COUNTY TAX MAP DEPARTMENT
 226 MIDDLE AVE. ELYRIA, OH

SURVEYED BY: PATRICK A. MCGANNON
 CLOSURE: 1:200,499
 MAP PAGE(S): 5-00-024
 APPROVED BY: RRM DATE: 11-25-19
 SCALE: 1" = 50' PRIOR INSTRUMENT: 20180698804