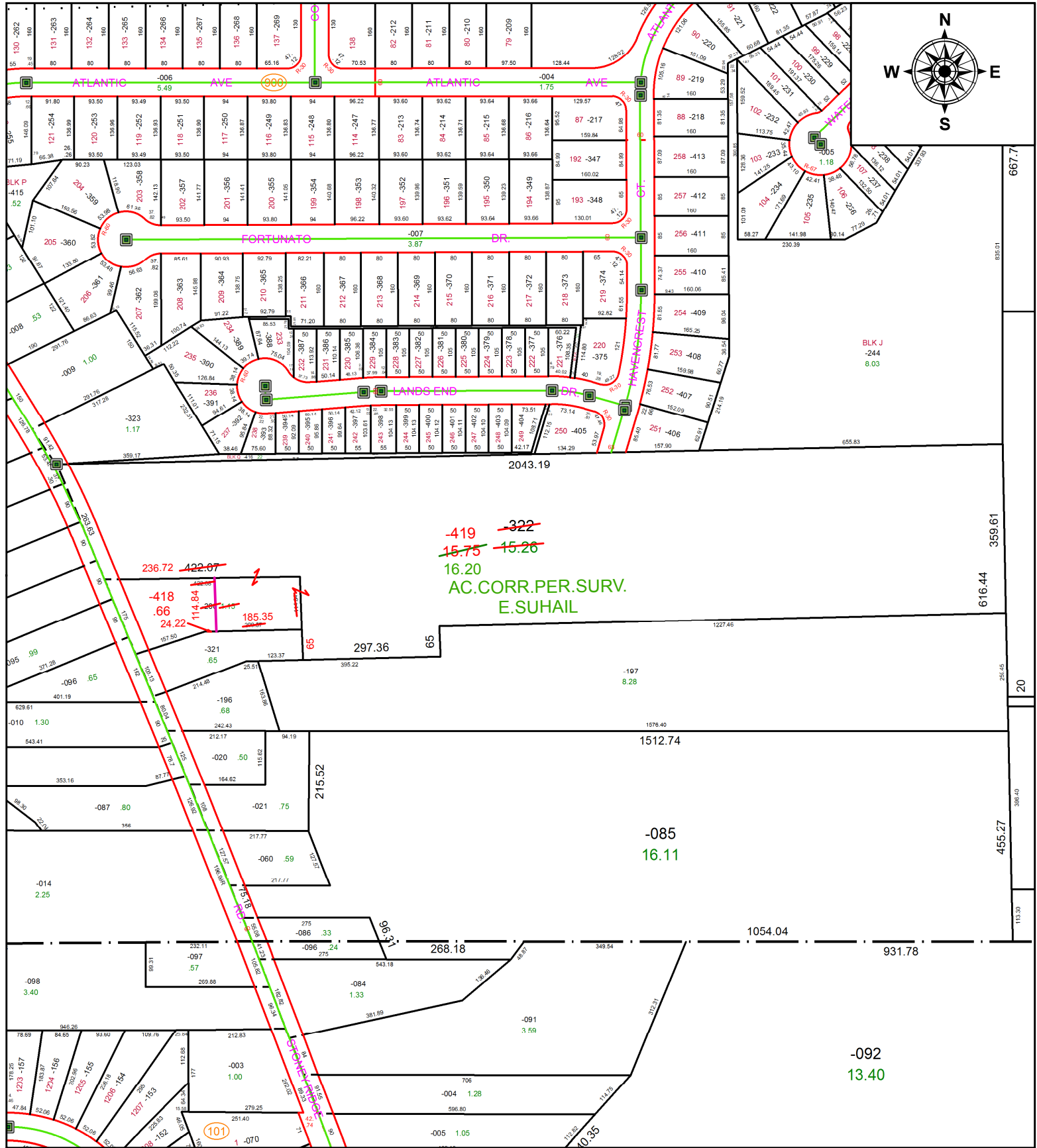


PARENT PARCEL: 07-00-029-000-200, -322

CHILD PARCEL: 07-00-029-000-418, -419

STARTING POINT: INTERSECTION OF C/L OF STONEY RIDGE RD. AND C/L OF BARRES RD.

20-04227



~~419~~ ~~322~~
~~15.75~~ ~~15.26~~
 16.20
 AC.CORR.PER.SURV.
 E.SUHAIL

SPLITS/DEEDS PROCESSED
 LORAIN COUNTY TAX MAP DEPARTMENT
 226 MIDDLE AVE. ELYRIA, OH

SURVEYED BY: EHTESHAM M. SUHAIL
 CLOSURE: 1: 103,912
 MAP PAGE(S): 7-00-029
 APPROVED BY: RRM DATE: 12-17-20
 SCALE: 1" = 275 PRIOR INSTRUMENT: 20200749338