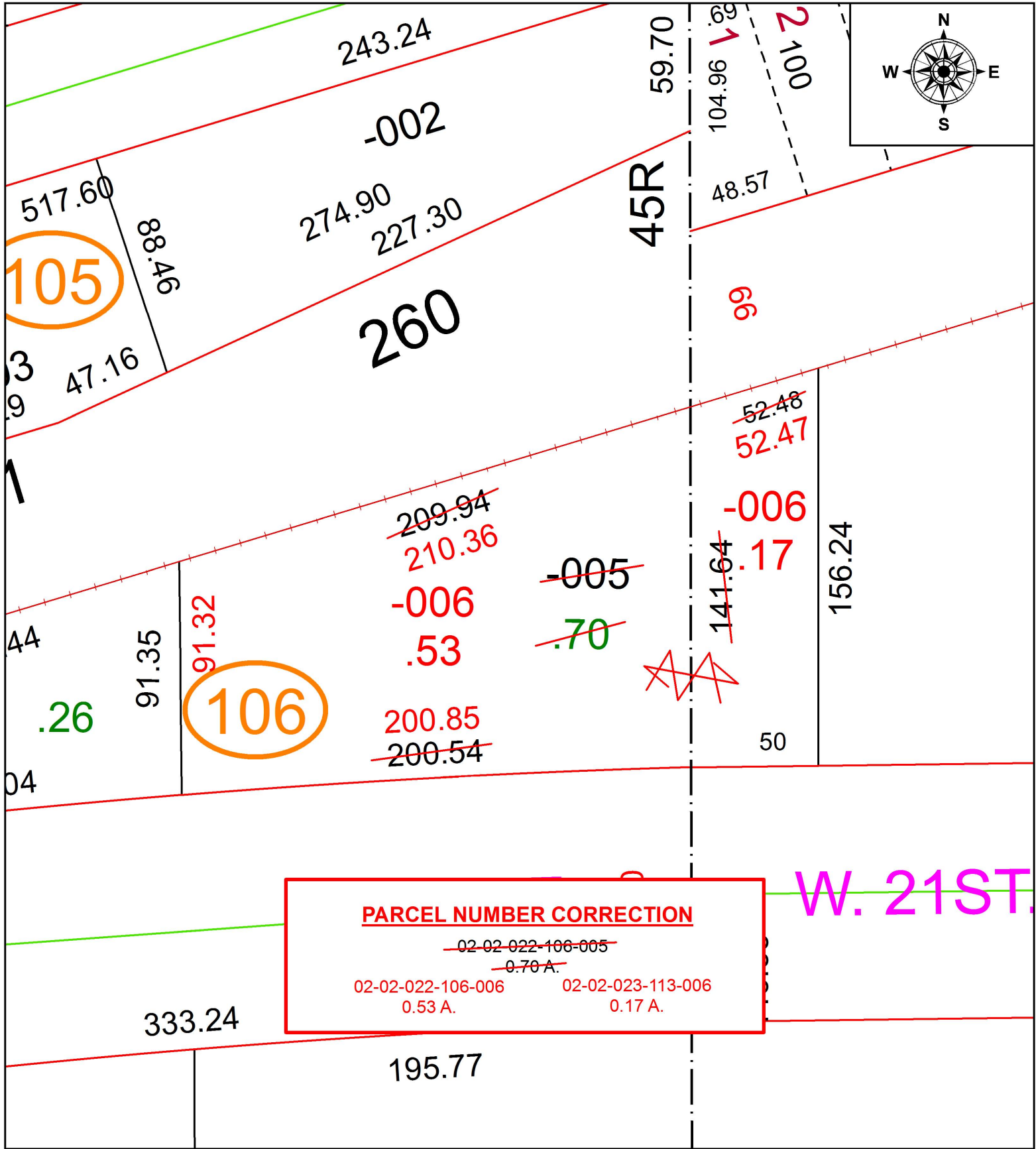
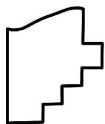


PARENT PARCEL: 02-02-022-106-005
 CHILD PARCEL: 02-02-022-106-006, 02-02-023-113-006
 STARTING POINT: INTERSECTION OF C/L OF W. 21ST ST. AND C/L OF LEAVITT RD.

19-04225-C



PARCEL NUMBER CORRECTION
~~02-02-022-106-005~~
~~0.70 A.~~
 02-02-022-106-006 0.53 A. 02-02-023-113-006 0.17 A.



SPLITS/DEEDS PROCESSED
 LORAIN COUNTY TAX MAP DEPARTMENT
 226 MIDDLE AVE. ELYRIA, OH

SURVEYED BY: PATRICK A. MCGANNON
 CLOSURE: 1:224,491
 MAP PAGE(S): 2-02-022
 APPROVED BY: RRM DATE: 11-19-19
 SCALE: 1" = 50 PRIOR INSTRUMENT: 20150562212