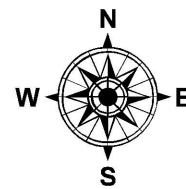


PARENT PARCEL: 03-00-056-129-002, 03-00-057-112-002, 03-00-058-102-022, -016, 03-00-059-000-035

CHILD PARCEL: 03-00-056-129-002, 03-00-057-112-002, 03-00-058-102-022, -025, -026, 03-00-059-000-035

STARTING POINT: INTERSECTION OF C/L OF NICHOLSON AVE. AND C/L OF LIBERTY AVE.

19-04224-C



**PARCEL NUMBER CORRECTION**

~~03-00-058-102-016~~

~~34.93 A.~~

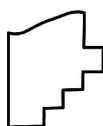
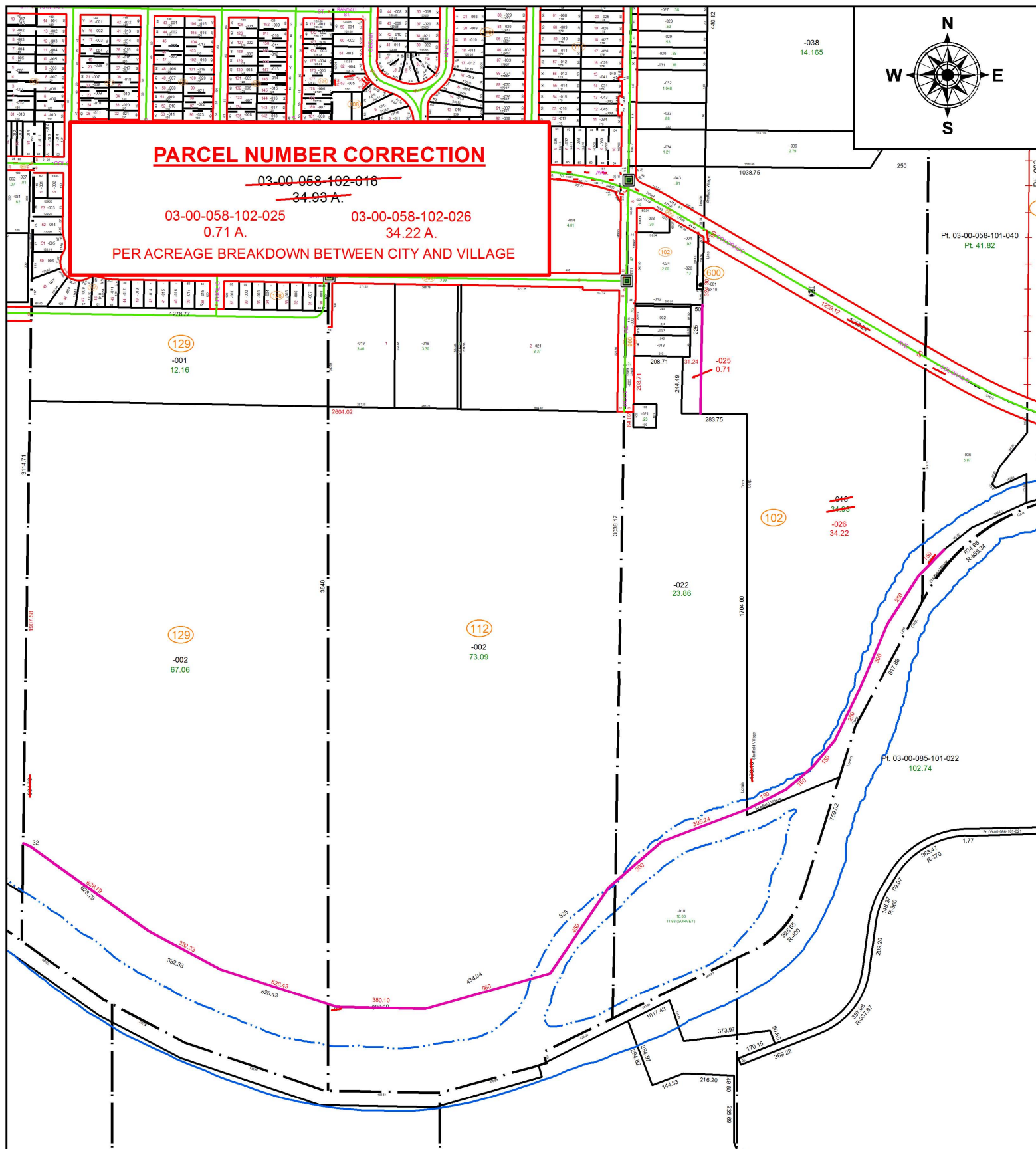
03-00-058-102-025

0.71 A.

03-00-058-102-026

34.22 A.

PER ACREAGE BREAKDOWN BETWEEN CITY AND VILLAGE



**SPLITS/DEEDS PROCESSED**

LORAIN COUNTY TAX MAP DEPARTMENT  
226 MIDDLE AVE. ELYRIA, OH

SURVEYED BY: THOMAS A. SIMON

CLOSURE: 1:125,662

MAP PAGE(S): 3-00-058

APPROVED BY: RRM DATE: 12-3-19

SCALE: 1" = 550 PRIOR INSTRUMENT: 20040023525