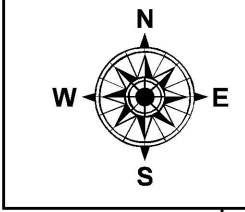
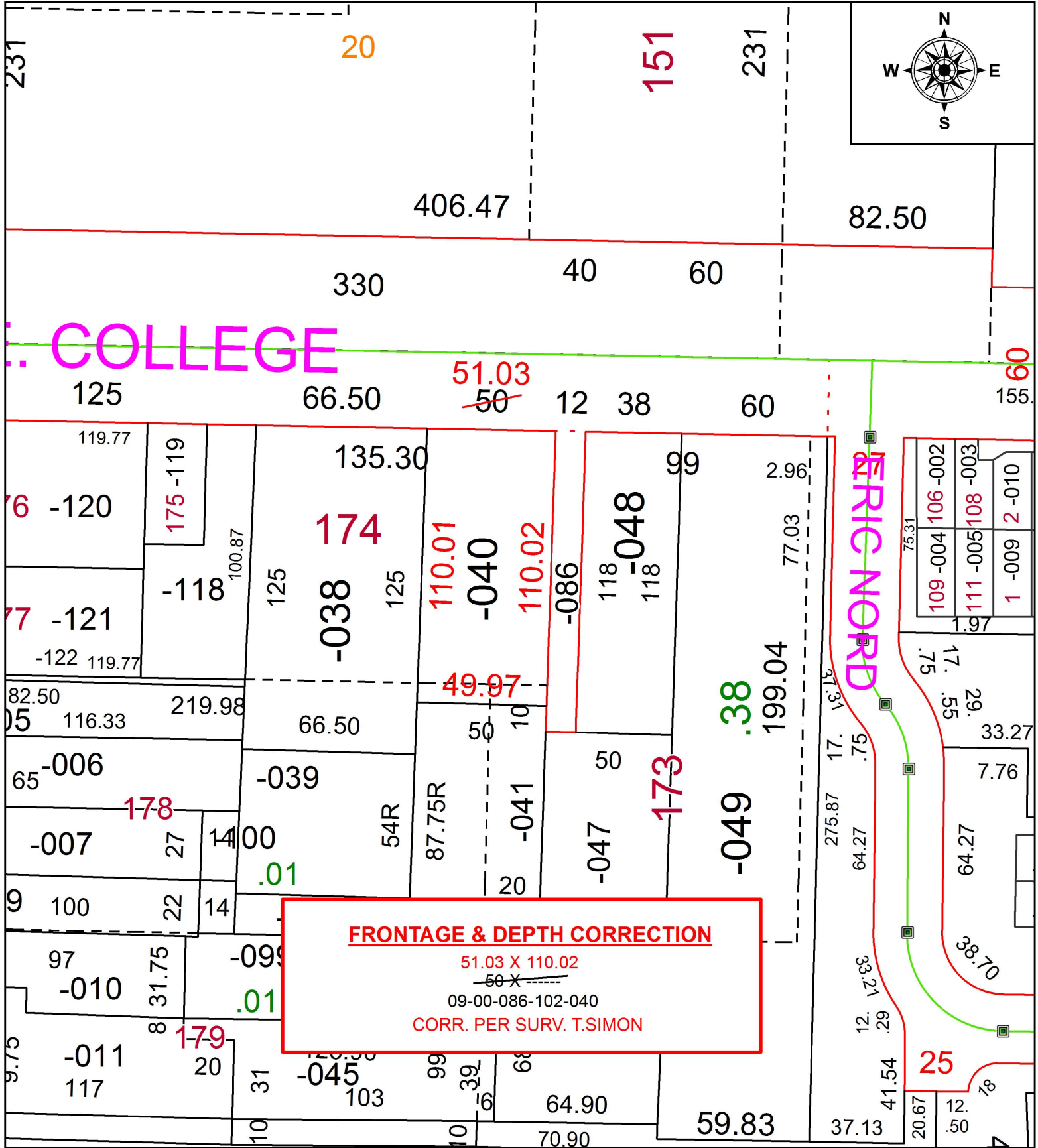


PARENT PARCEL: 09-00-086-102-040

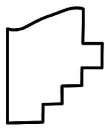
CHILD PARCEL:

STARTING POINT: INTERSECTION OF C/L OF E. COLLEGE ST. AND C/L OF S. MAIN ST.

19-04223-D



FRONTAGE & DEPTH CORRECTION
 51.03 X 110.02
 50 X
 09-00-086-102-040
 CORR. PER SURV. T.SIMON



SPLITS/DEEDS PROCESSED
 LORAIN COUNTY TAX MAP DEPARTMENT
 226 MIDDLE AVE. ELYRIA, OH

SURVEYED BY: THOMAS A. SIMON
CLOSURE: 1:340,769
MAP PAGE(S): 9-00-086
APPROVED BY: RRM **DATE:** 11-18-19
SCALE: 1" = 50 **PRIOR INSTRUMENT:** 19990631690