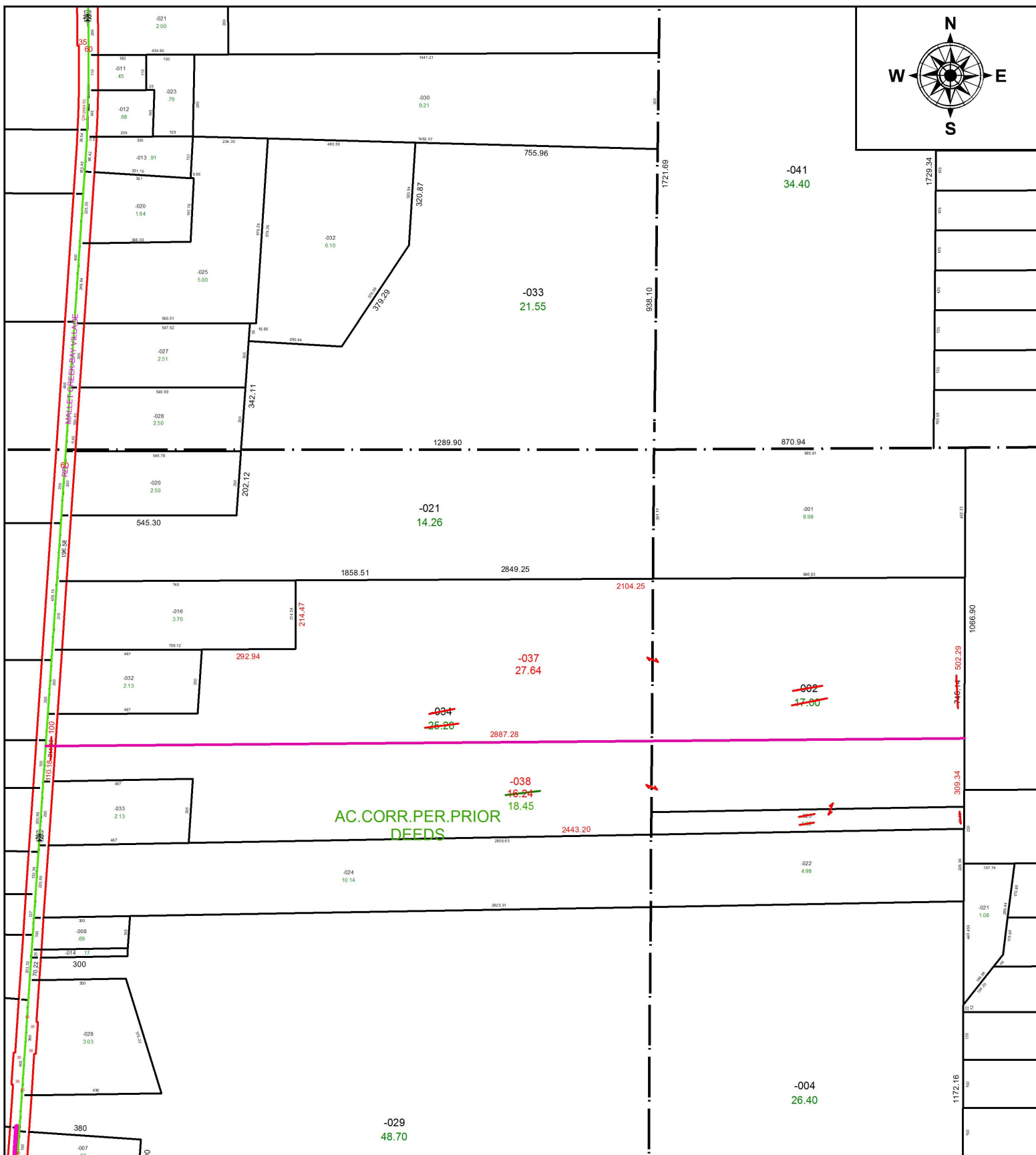
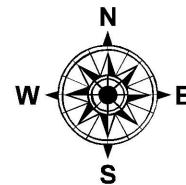


PARENT PARCEL: 12-00-030-000-002, -023, 12-00-031-000-034

CHILD PARCEL: 12-00-031-000-037, -038

STARTING POINT: INTERSECTION OF EAST RIVER RD. AND NORTH LINE OF O.L.31

19-04221-U



**SPLITS/DEEDS PROCESSED**  
LORAIN COUNTY TAX MAP DEPARTMENT  
226 MIDDLE AVE. ELYRIA, OH

SURVEYED BY: N/A  
CLOSURE: 1:680,775  
MAP PAGE(S): 12-00-031  
APPROVED BY: RRM DATE: 11-8-19  
SCALE: 1" = 400 PRIOR INSTRUMENT: 20190724565