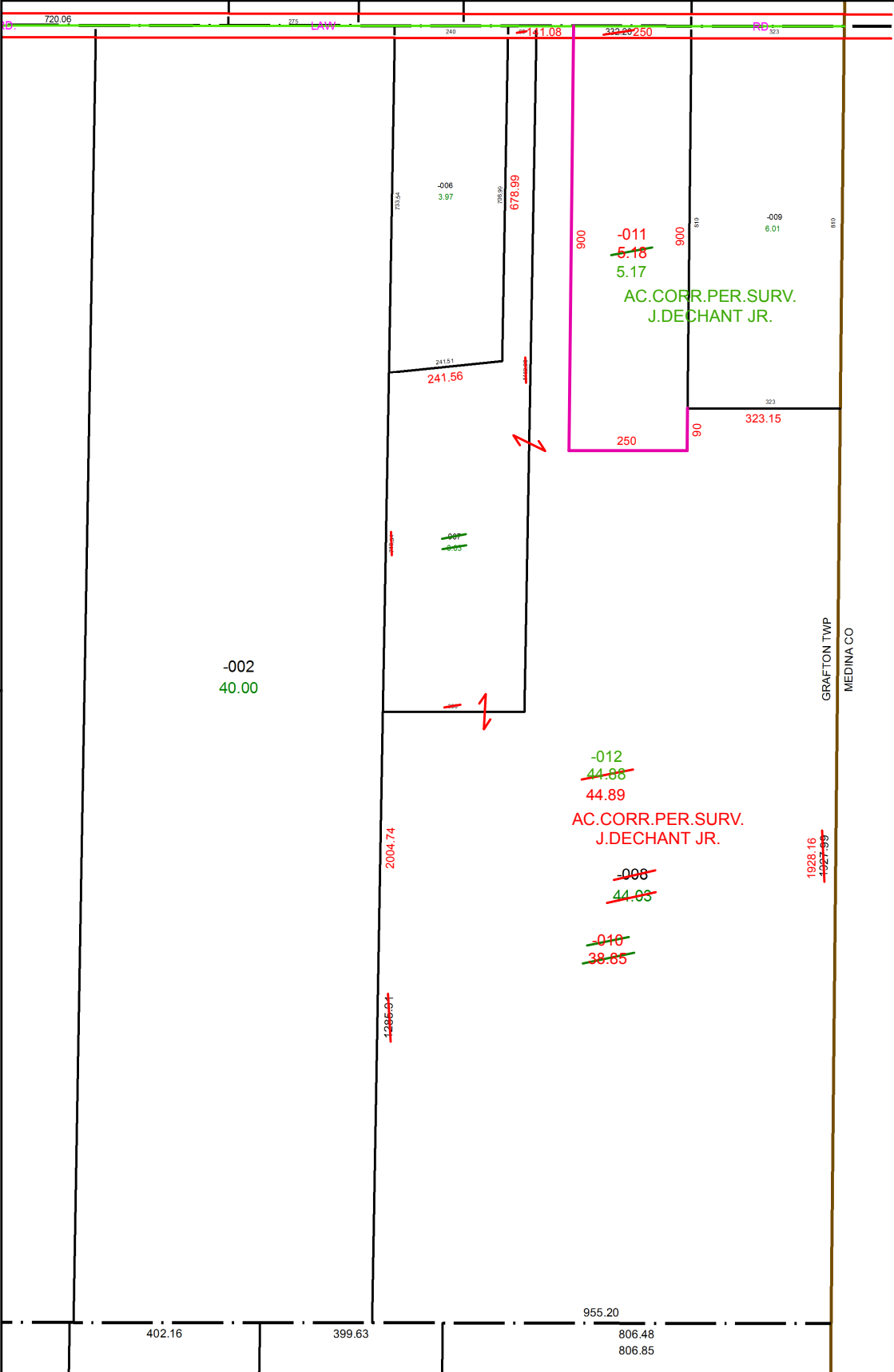
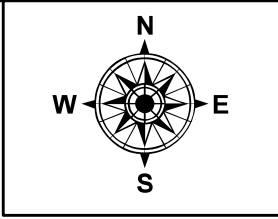


PARENT PARCEL: 16-00-071-000-007, -008

CHILD PARCEL: 16-00-071-000-010 THRU -012

STARTING POINT: INTERSECTION OF C/L OF LAW RD. AND EAST LINE OF LORAIN COUNTY

20-04219



SPLITS/DEEDS PROCESSED
LORAIN COUNTY TAX MAP DEPARTMENT
226 MIDDLE AVE. ELYRIA, OH

SURVEYED BY: JOHN A. DECHANT JR.
CLOSURE: 1:1,412,519
MAP PAGE(S): 16-00-071
APPROVED BY: RRM DATE: 12-3-20
SCALE: 1" = 325 PRIOR INSTRUMENT: 20200782447