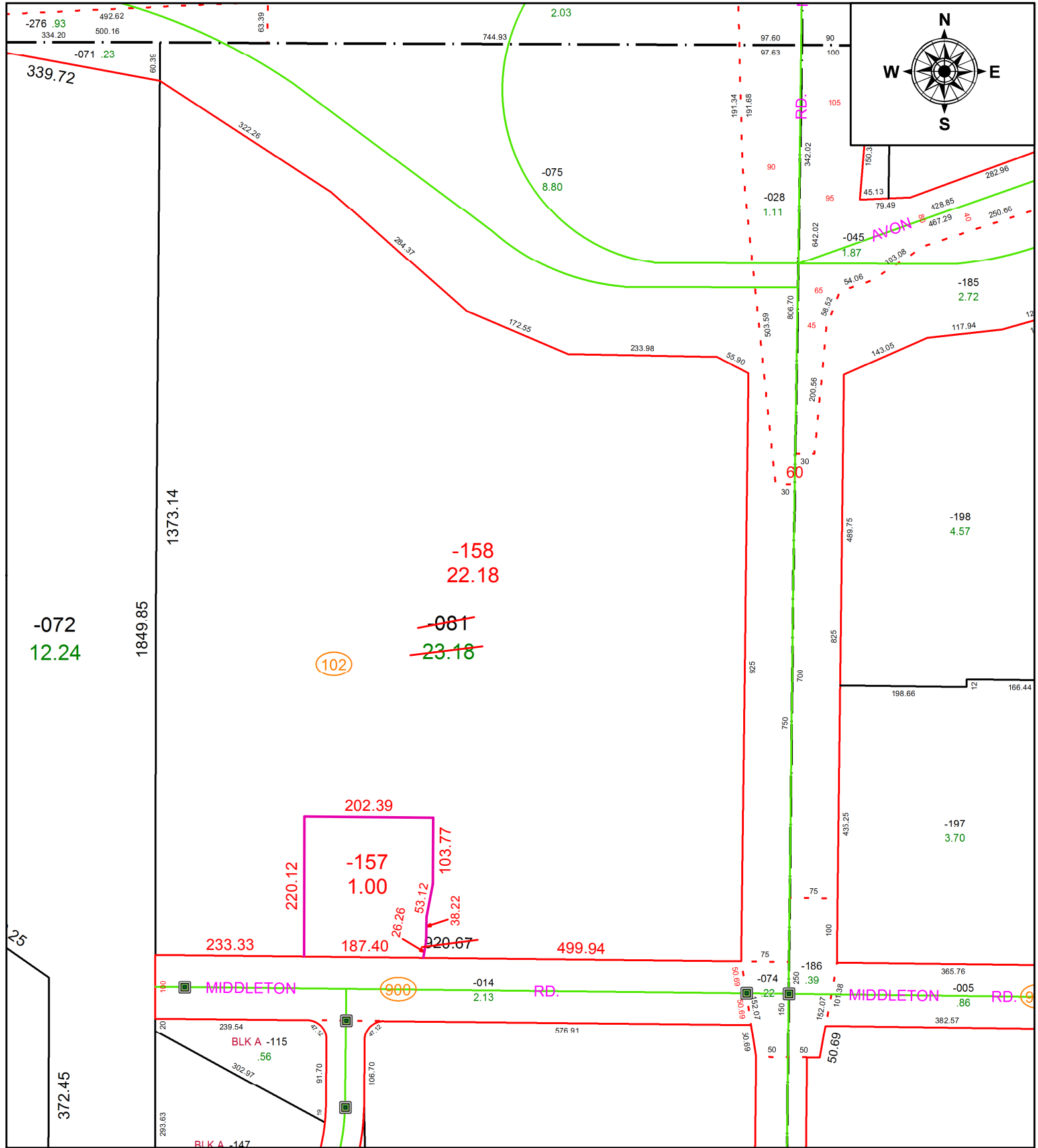


PARENT PARCEL: 04-00-022-102-081

CHILD PARCEL: 04-00-022-102-157, -158

STARTING POINT: NORTHEAST CORNER OF SECTION 22

20-04218



SPLITS/DEEDS PROCESSED
 LORAIN COUNTY TAX MAP DEPARTMENT
 226 MIDDLE AVE. ELYRIA, OH

SURVEYED BY: BRYAN D. ELLIS
 CLOSURE: 1:115,349
 MAP PAGE(S): 4-00-022
 APPROVED BY: RRM DATE: 11-23-20
 SCALE: 1" = 200 PRIOR INSTRUMENT: 20150568557