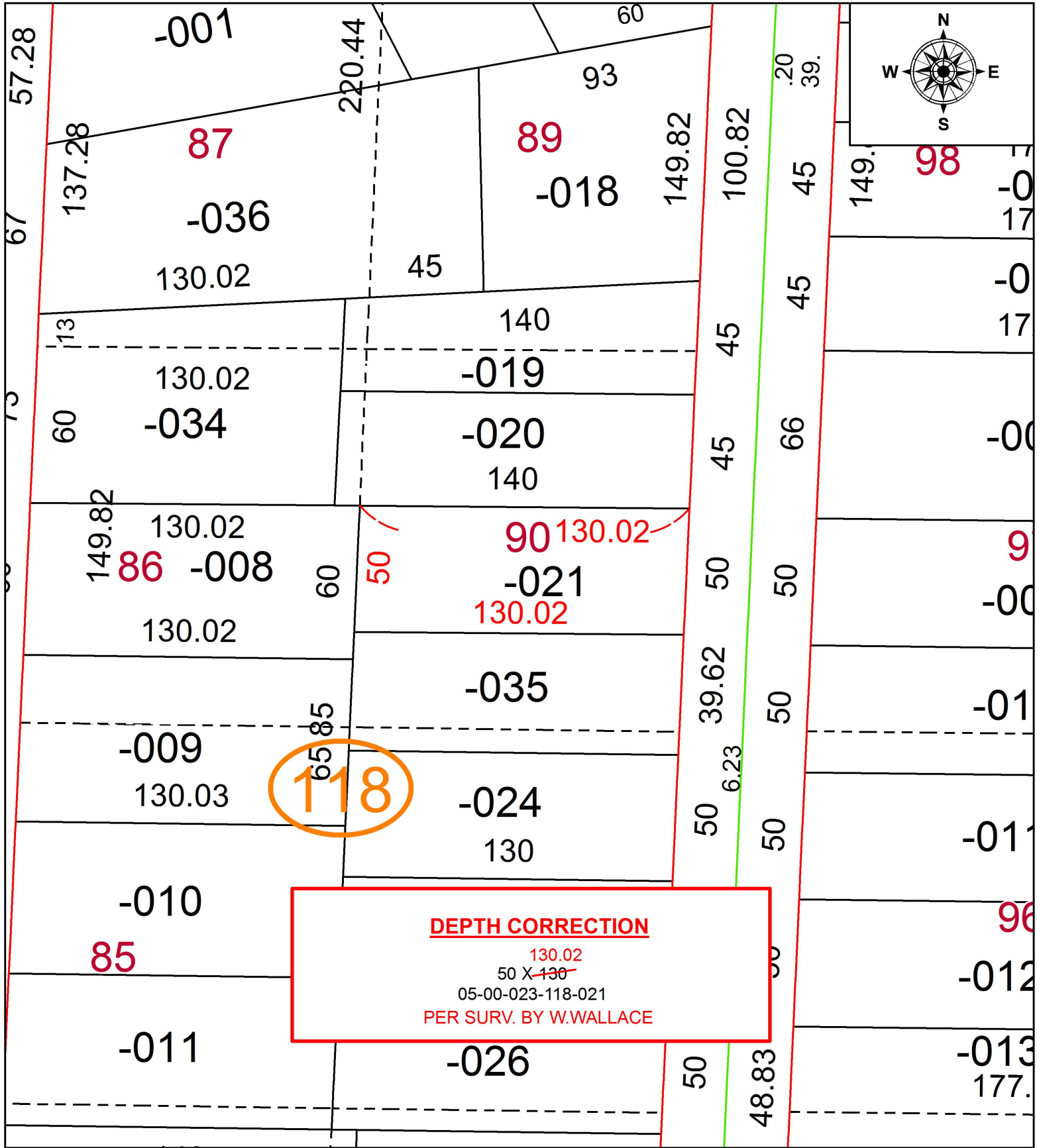


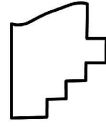
PARENT PARCEL: 05-00-023-118-021

CHILD PARCEL:

STARTING POINT: INTERSECTION OF SOUTH LINE OF CLEVELAND AVE. AND WEST LINE OF FOREST ST.

19-04218-D



 **SPLITS/DEEDS PROCESSED**
 LORAIN COUNTY TAX MAP DEPARTMENT
 226 MIDDLE AVE. ELYRIA, OH

SURVEYED BY: WILLIAM R. WALLACE
 CLOSURE: 1:2147483648
 MAP PAGE(S): 5-00-023
 APPROVED BY: RRM DATE: 11-1-19
 SCALE: 1" = 50' PRIOR INSTRUMENT: 20120442383