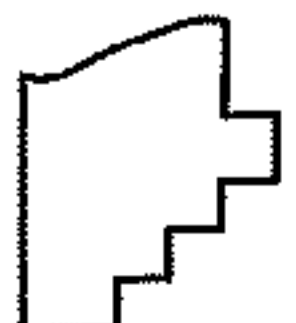
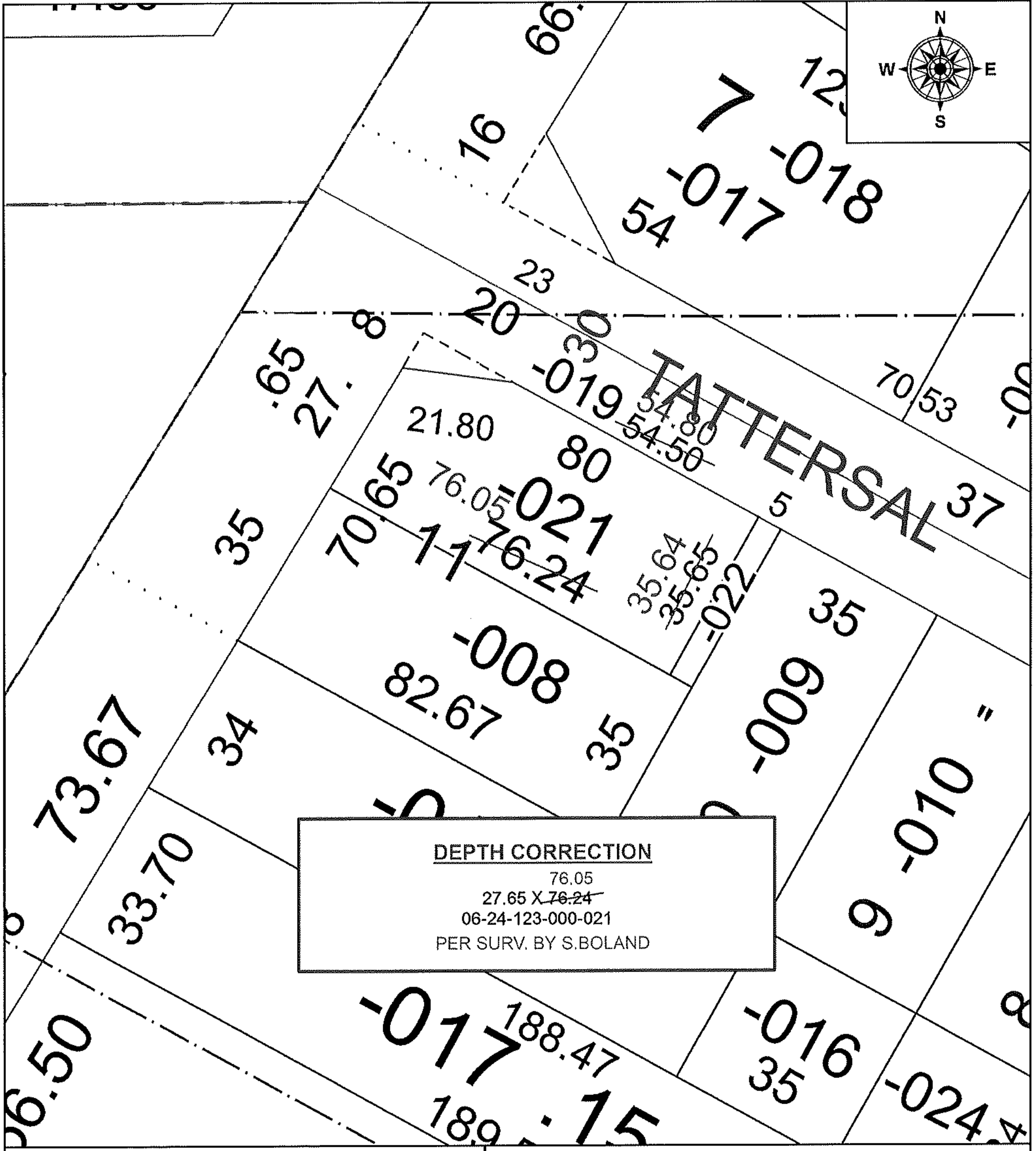


PARENT PARCEL: 06-24-123-000-021

CHILD PARCEL:

STARTING POINT: INTERSECTION OF C/L OF WEST RIVER RD. AND SOUTH LINE OF O.L.123

19-04214-D



SPLITS/DEEDS PROCESSED
 LORAIN COUNTY TAX MAP DEPARTMENT
 226 MIDDLE AVE. ELYRIA, OH

SURVEYED BY: SEAN A. BOLAND
 CLOSURE: 1:38,747
 MAP PAGE(S): 6-24-123
 APPROVED BY: RRM DATE: 10-30-19
 SCALE: 1" = 25' PRIOR INSTRUMENT: 20120405355