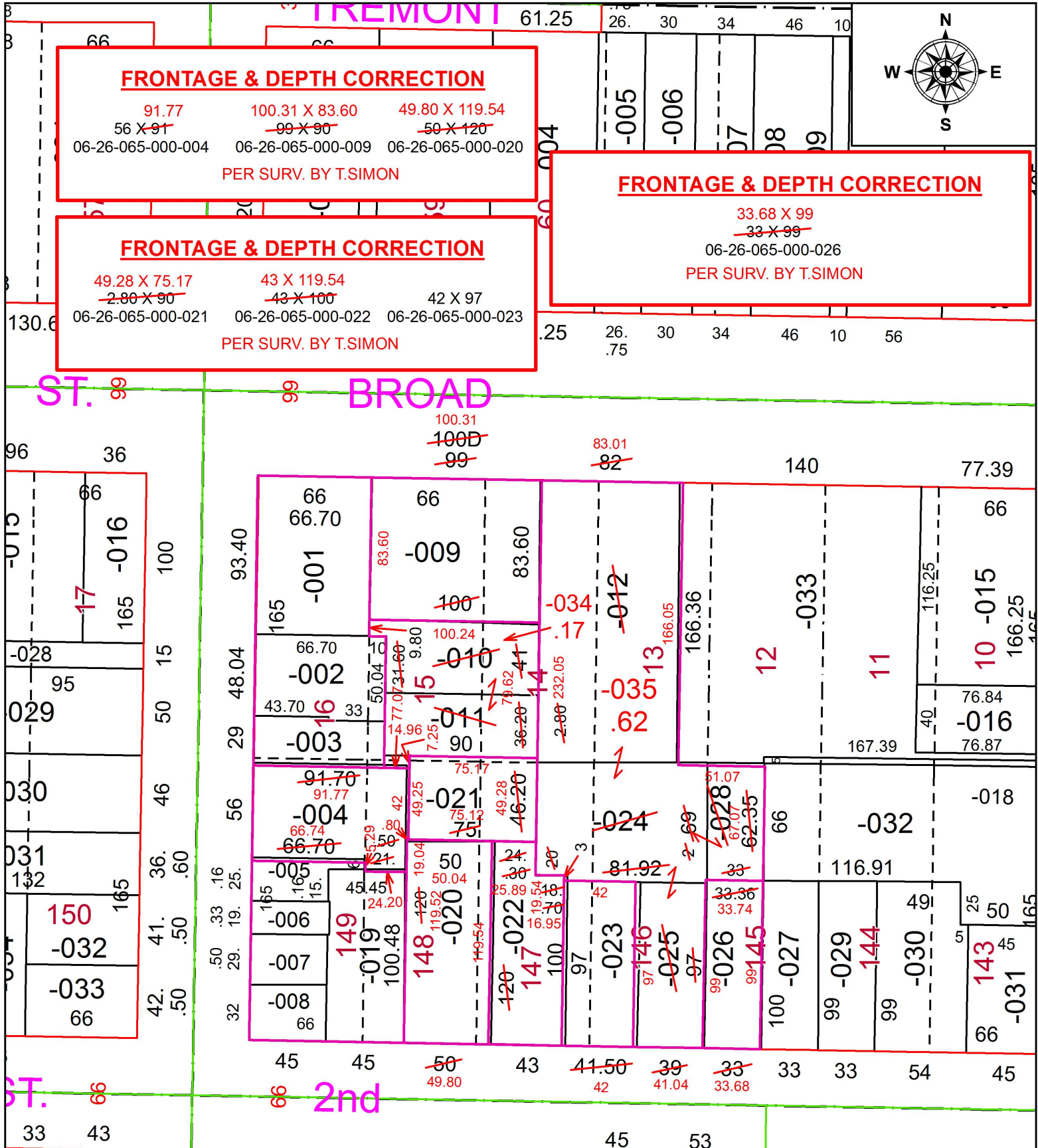


PARENT PARCEL: 06-26-065-000-004, -009, -020, -021, -022, -023, -026, -010, -011, -012, -024, -025, -028

CHILD PARCEL: 06-26-065-000-004, -009, -020, -021, -022, -023, -026, -034, -035

STARTING POINT: INTERSECTION OF C/L OF NICHOLSON AVE. AND C/L OF LIBERTY AVE.

19-04212-D



**SPLITS/DEEDS PROCESSED**  
 LORAIN COUNTY TAX MAP DEPARTMENT  
 226 MIDDLE AVE. ELYRIA, OH

SURVEYED BY: THOMAS A. SIMON  
 CLOSURE: 1:87,268  
 MAP PAGE(S): 6-26-065  
 APPROVED BY: RRM DATE: 10-25-19  
 SCALE: 1" = 75 PRIOR INSTRUMENT: 20080237366