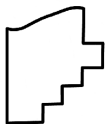
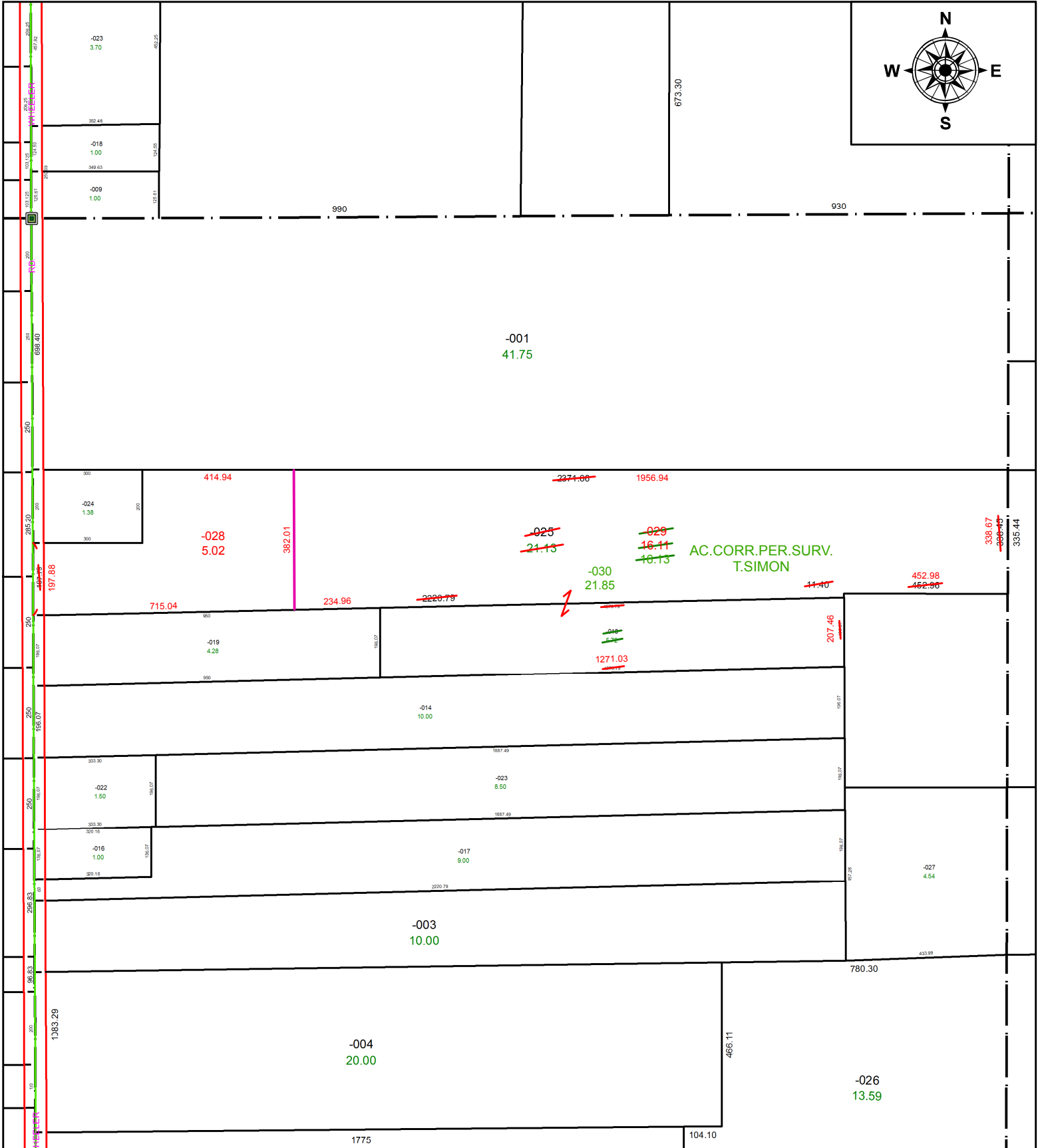
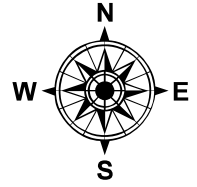


PARENT PARCEL: 15-00-013-000-018, -025

CHILD PARCEL: 15-00-013-000-028 THRU -030

STARTING POINT: SOUTHWEST CORNER OF O.L. 13

20-04211



SPLITS/DEEDS PROCESSED
LORAIN COUNTY TAX MAP DEPARTMENT
226 MIDDLE AVE. ELYRIA, OH

SURVEYED BY: THOMAS A. SIMON

CLOSURE: 1:764,983

MAP PAGE(S): 15-00-013

APPROVED BY: RRM DATE: 11-13-20

SCALE: 1" = 350 PRIOR INSTRUMENT: 20190707400